



4 - 5 Beds

2.5 - 4 Baths

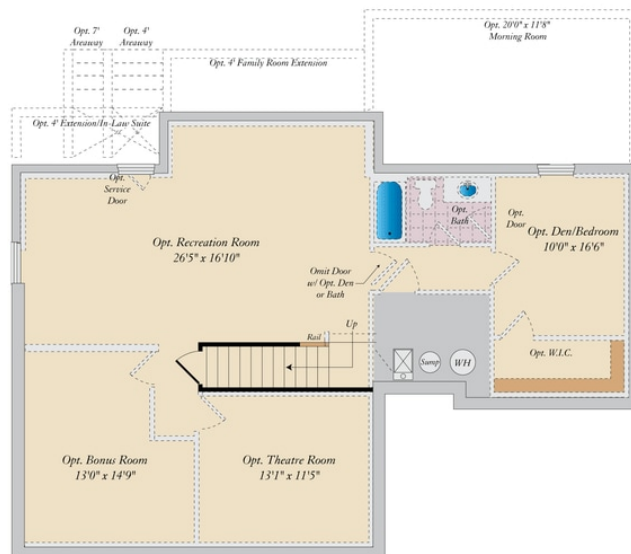
2,609 - 4,787 Sq Ft

The Oxford plan is a single family floor plan starting at 2,530 sq. ft. with the capability of up to 3,965 sq. ft. and up to 5 bedrooms. Choose from hundreds of luxury options and finishes to design a home that is uniquely yours. All our popular features are available such as a gourmet kitchen, stone or modern fireplaces, in-law suite, California spa bath, and basements made for entertaining with theater room, wet bar and much more!

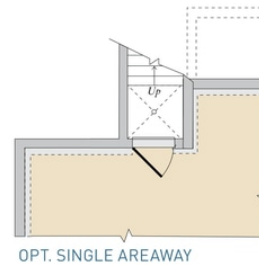
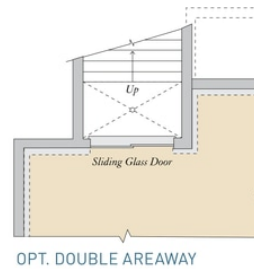
Available Elevations



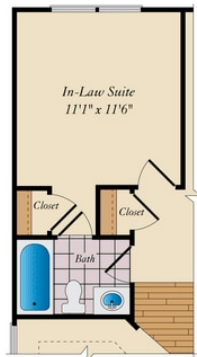
BASEMENT



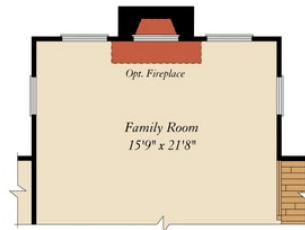
OPT. FINISHED LOWER LEVEL



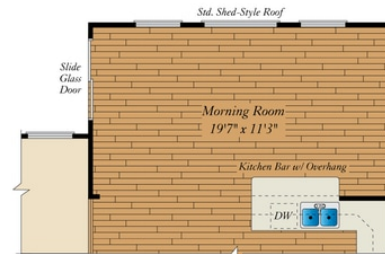
FIRST FLOOR



OPT. IN-LAW SUITE



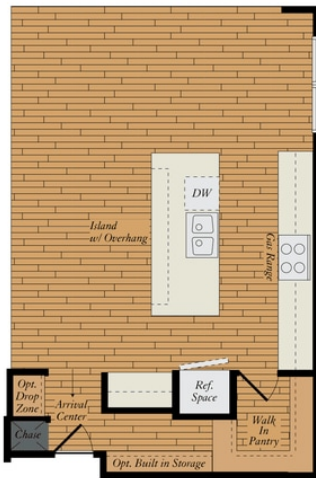
OPT. 4' FAMILY ROOM EXTENSION



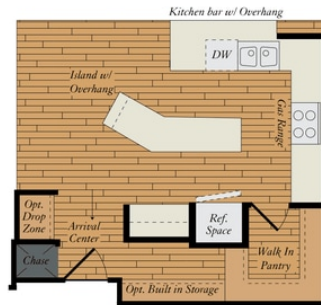
OPT. LARGE MORNING ROOM



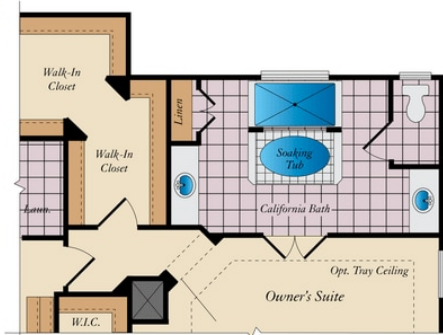
SECOND FLOOR



OPT. STANDARD DELUXE KITCHEN



OPT. GOURMET KITCHEN
W/ MORNING ROOM



OPT. CALIFORNIA BATH

