



**4 - 5 Beds**

**2.5 - 4 Baths**

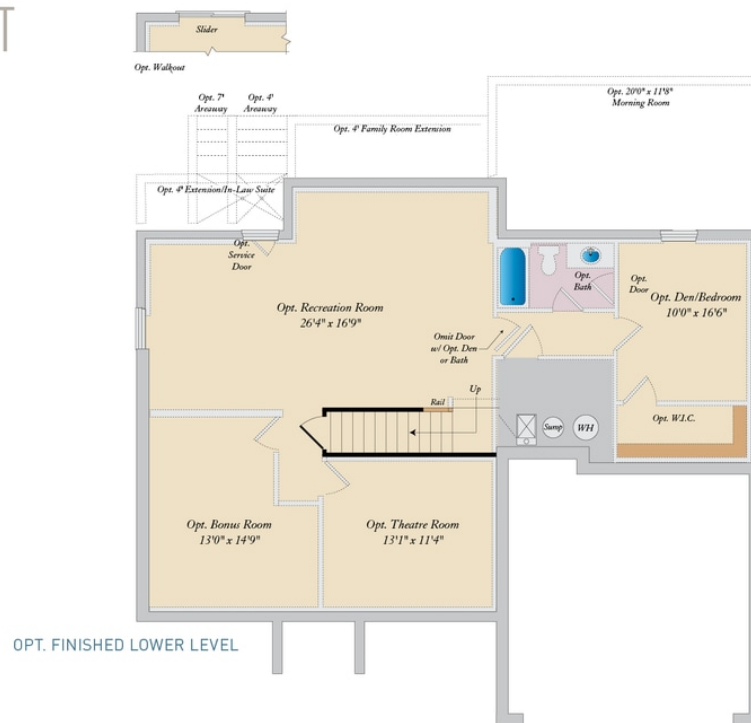
**2,609 - 4,787 Sq Ft**

The Oxford plan is a single family floor plan starting at 2,530 sq. ft. with the capability of up to 3,965 sq. ft. and up to 5 bedrooms. Choose from hundreds of luxury options and finishes to design a home that is uniquely yours. All our popular features are available such as a gourmet kitchen, stone or modern fireplaces, in-law suite, California spa bath, and basements made for entertaining with theater room, wet bar and much more!

## Available Elevations



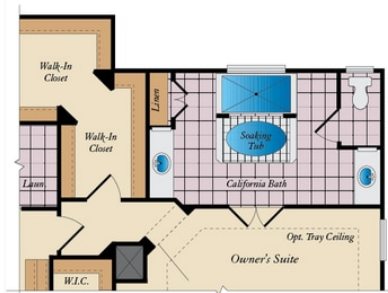
## BASEMENT



## FIRST FLOOR



## SECOND FLOOR



OPT. CALIFORNIA BATH

