



Single Family

Available In

**0** COMMUNITY  
& ON YOUR LOT

**4 - 5 Beds**

**2.5 - 4 Baths**

**2,609 - 4,852 Sq Ft**

The Oxford plan is a single family floor plan starting at 2,530 sq. ft. with the capability of up to 3,965 sq. ft. and up to 5 bedrooms. Choose from hundreds of luxury options and finishes to design a home that is uniquely yours. All our popular features are available such as a gourmet kitchen, stone or modern fireplaces, in-law suite, California spa bath, and basements made for entertaining with theater room, wet bar and much more!

## Available Elevations



Oxford Elevation 3 - Show with Opt. Stone  
Opt. Side Load Garage with Opt. Sitting  
Room Above

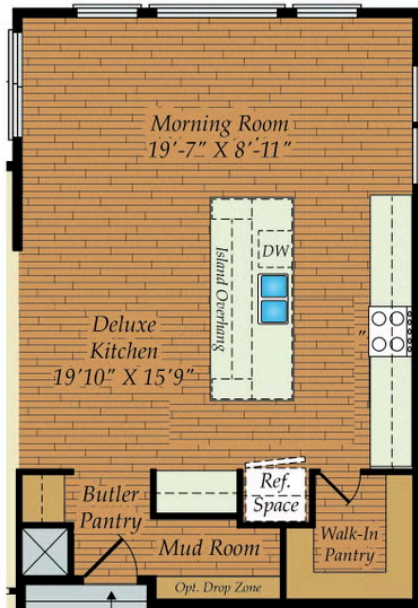


Oxford Elevation 4 - With Opt. Brick

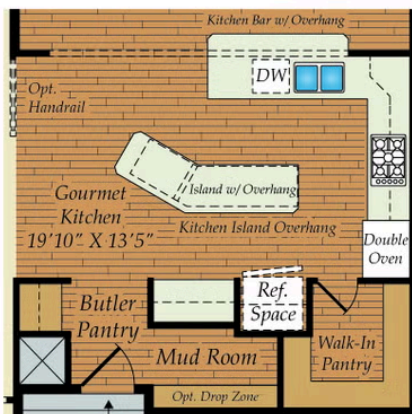


Oxford Elevation 5 - with Opt. Stone, Opt.  
Side Load Garage with Opt. Sitting Room

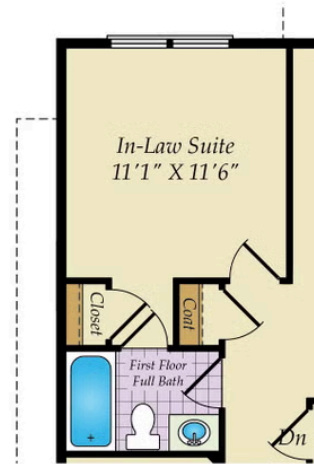
## OTHER OPTIONS FIRST FLOOR PLAN



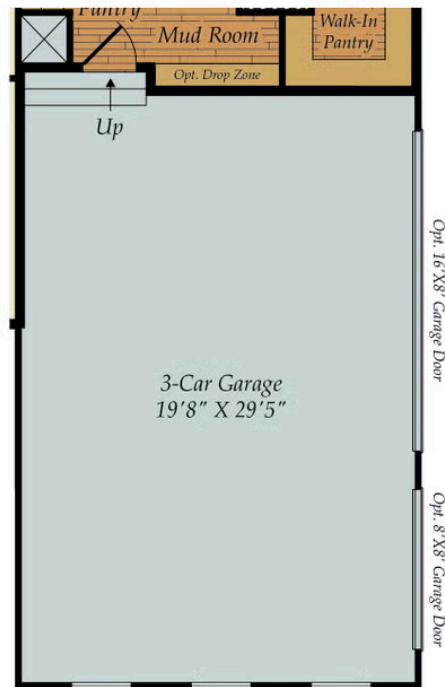
OPT. DELUXE KITCHEN W/MORNING ROOM



OPT. GOURMET KITCHEN  
W/ MORNING ROOM



OPT. IN-LAW SUITE

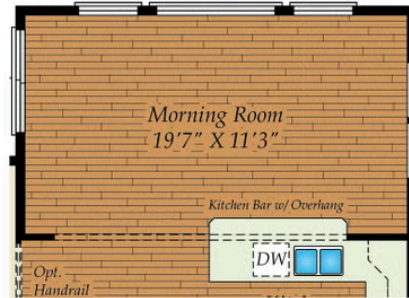


OPT. 3-CAR SIDE LOAD GARAGE

## FIRST FLOOR



OPT. 4' FAMILY ROOM EXTENSION

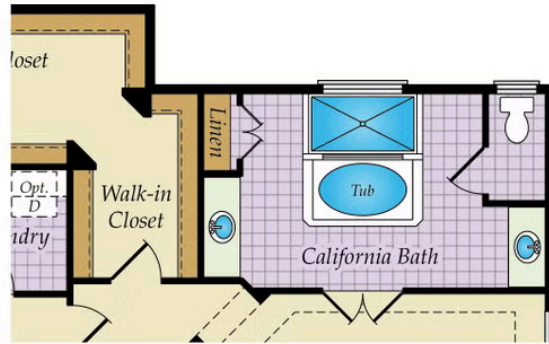


OPT. MORNING ROOM

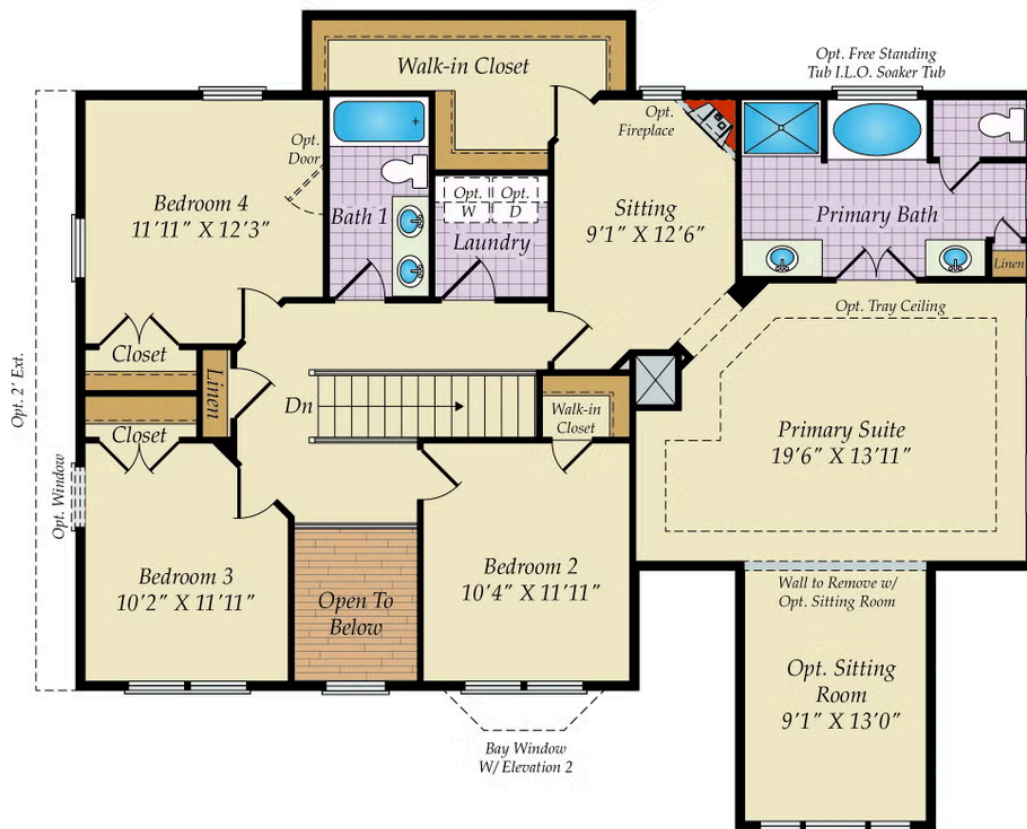




## SECOND FLOOR

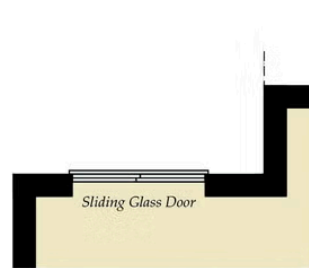
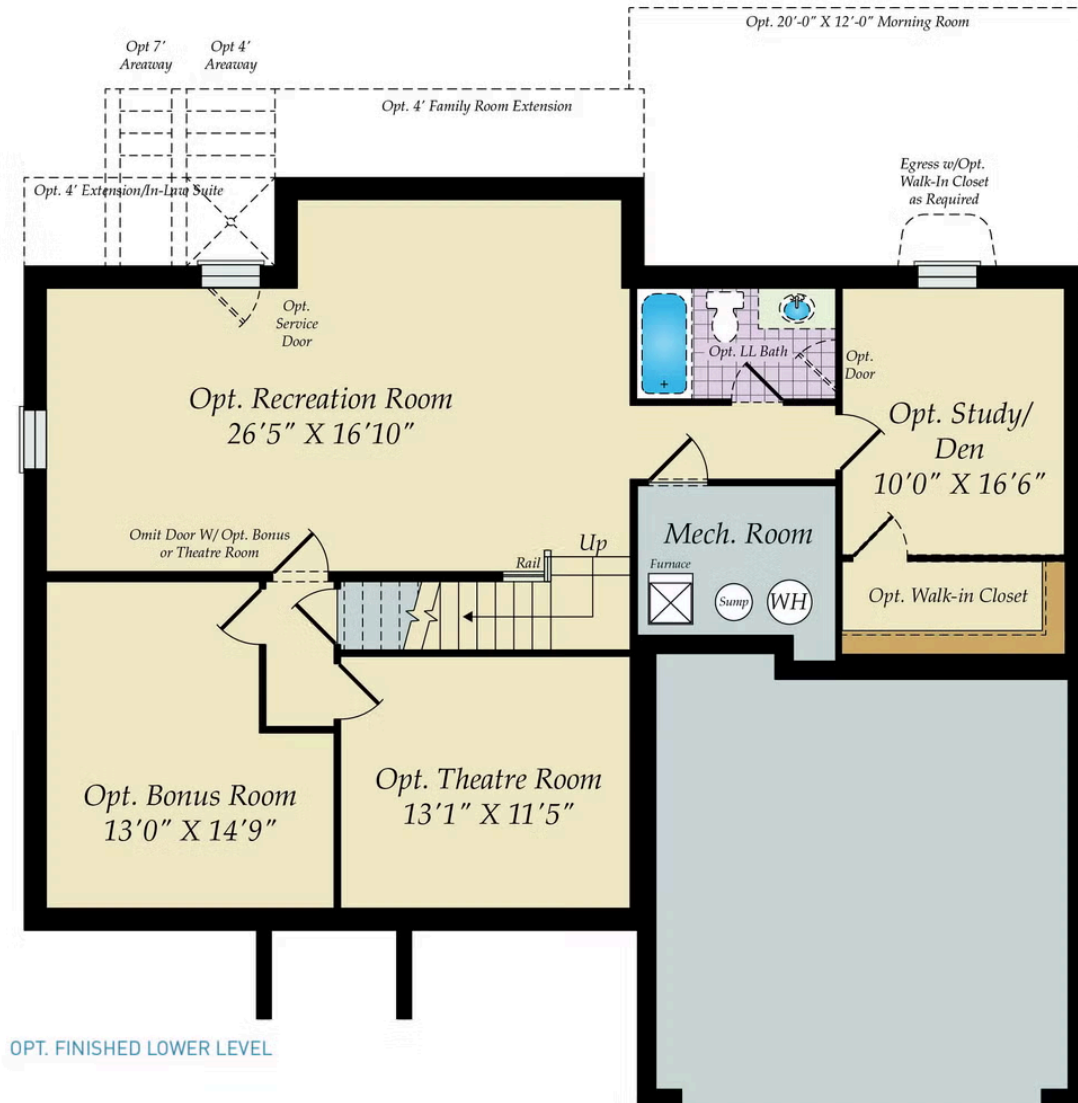


OPT. CALIFORNIA BATH

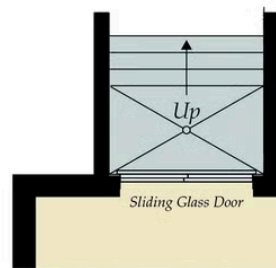




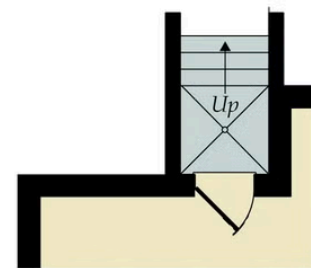
# BASEMENT



**OPT. WALKOUT**



**OPT. DOUBLE AREAWAY**



**OPT. SINGLE AREAWAY**