



2 - 3 Beds

2 Baths

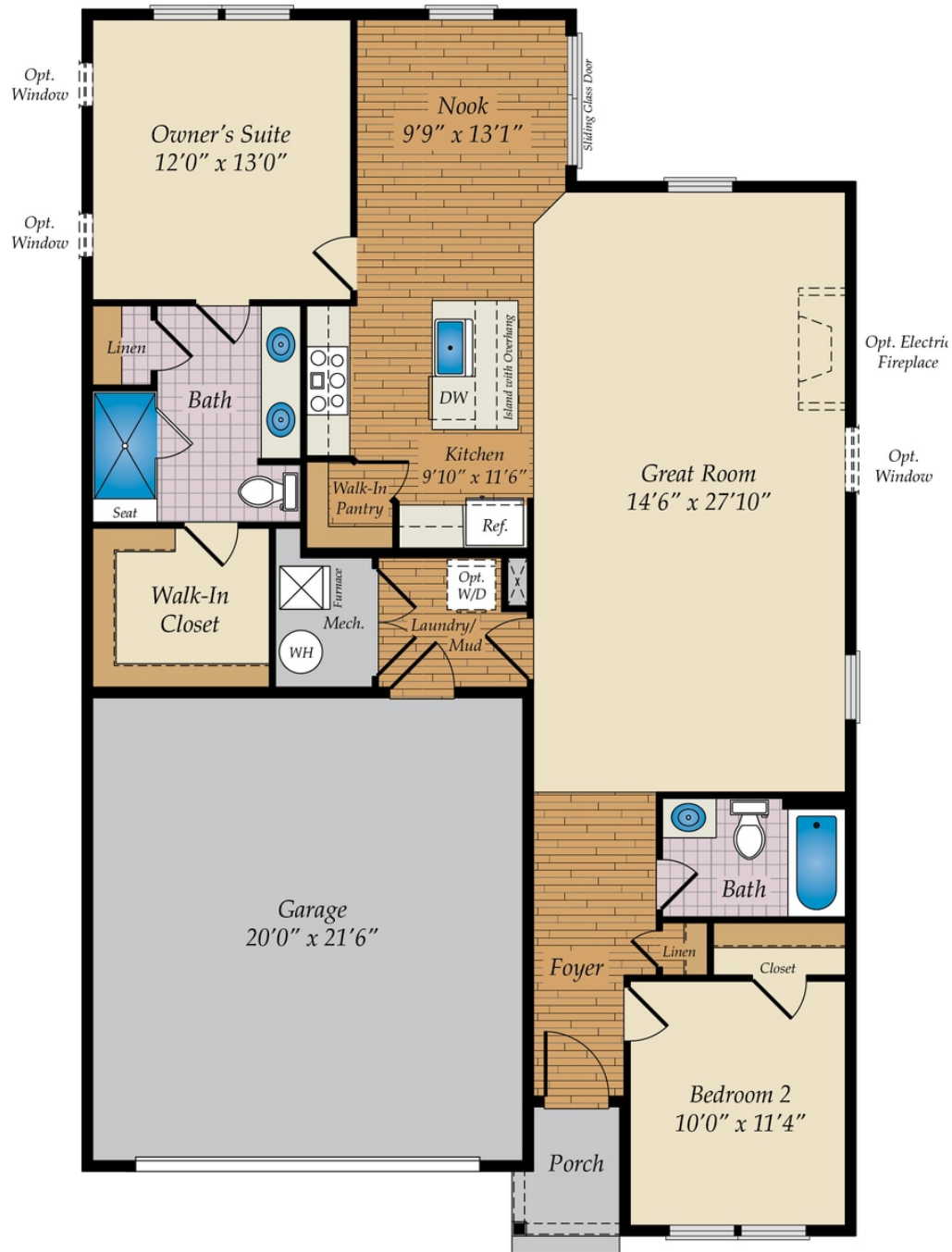
1,409 - 1,510 Sq Ft

For those who want a smaller home with a big personality, the Osmond makes great use of space within a smaller footprint. The open floor plan includes an oversize great room measuring in at a whopping 14' x 28' which you can choose to keep as an open living area or close off a portion to create a 3rd bedroom, a home office or finished storage space. The kitchen features a center island, walk-in pantry and breakfast nook with a slider that opens to an optional patio, screened porch or sunroom. The master suite includes an ensuite bath with double sinks, walk-in shower and a large walk-in closet. An extra bedroom and full bath for guests and laundry/mud room leading to a 2-car garage complete the home.

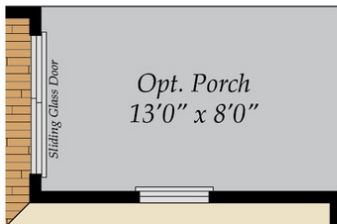
Available Elevations



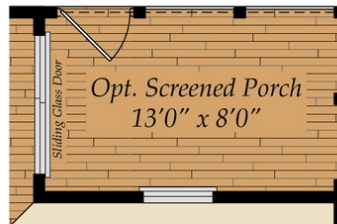
FIRST FLOOR



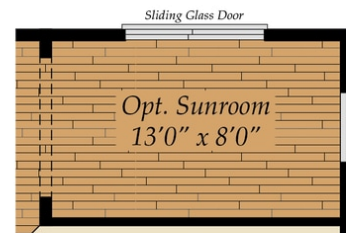
ADDITIONAL OPTIONS



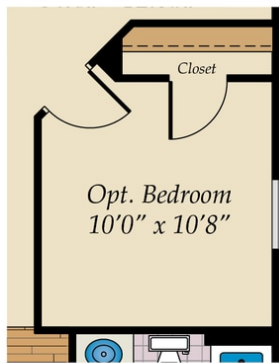
OPT. PORCH



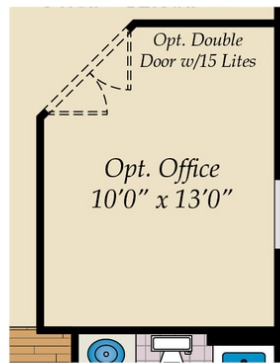
OPT. SCREENED PORCH



OPT. SUNROOM



OPT. BEDROOM



OPT. OFFICE



OPT. LUXURY OWNER'S BATH