



Single Family

Available In

0 COMMUNITY
& ON YOUR LOT

4 - 5 Beds

2.5 - 6.5 Baths

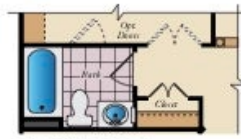
4,554 - 8,162 Sq Ft

The Monticello Craftsman plan is a gorgeous estate home starting at 4,650 square feet, with options to expand up to 7,610 square feet of elegant living space. The home can be built with a two or three car garage and is available in many elevations, including brick and stone combination fronts and craftsman styles. Inside, this home is loaded with luxury including a grand two-story foyer, a spacious kitchen and multiple additions such as a morning room and conservatory. Retreat to the owner's suite where you can enjoy a sitting area with optional fireplace, a dreamy his & her walk-in closet and an opulent spa bath with the option to add an exercise room. This basement is ready for fun and entertainment when you add options such as a rec room, theater room, wet bar and a den or 5th bedroom. There are endless ways to personalize this luxurious home with your own unique style.

Available Elevations



FIRST FLOOR



OPT. FULL BATH



OPT. MORNING ROOM



OPT. CONSERVATORY



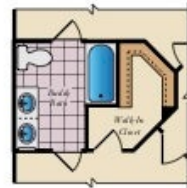
OPT. POWDER ROOM

OPT. 3-CAR SIDE-ENTRY GARAGE



To see more options or build your own floor plan,
VISIT OUR FLOOR PLAN DESIGNER
See the back of this insert for more information.

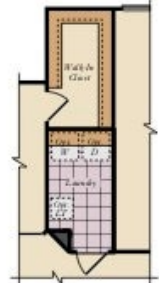
SECOND FLOOR



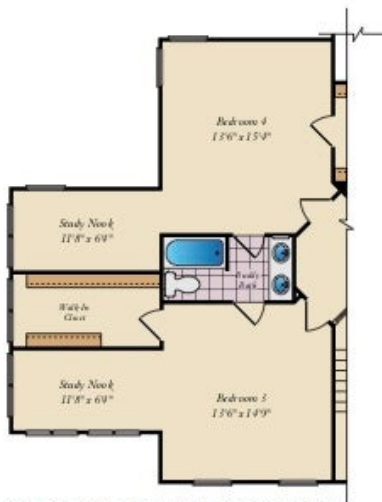
OPT. BUDDY BATH



OPT. 4TH BATH



OPT. LAUNDRY

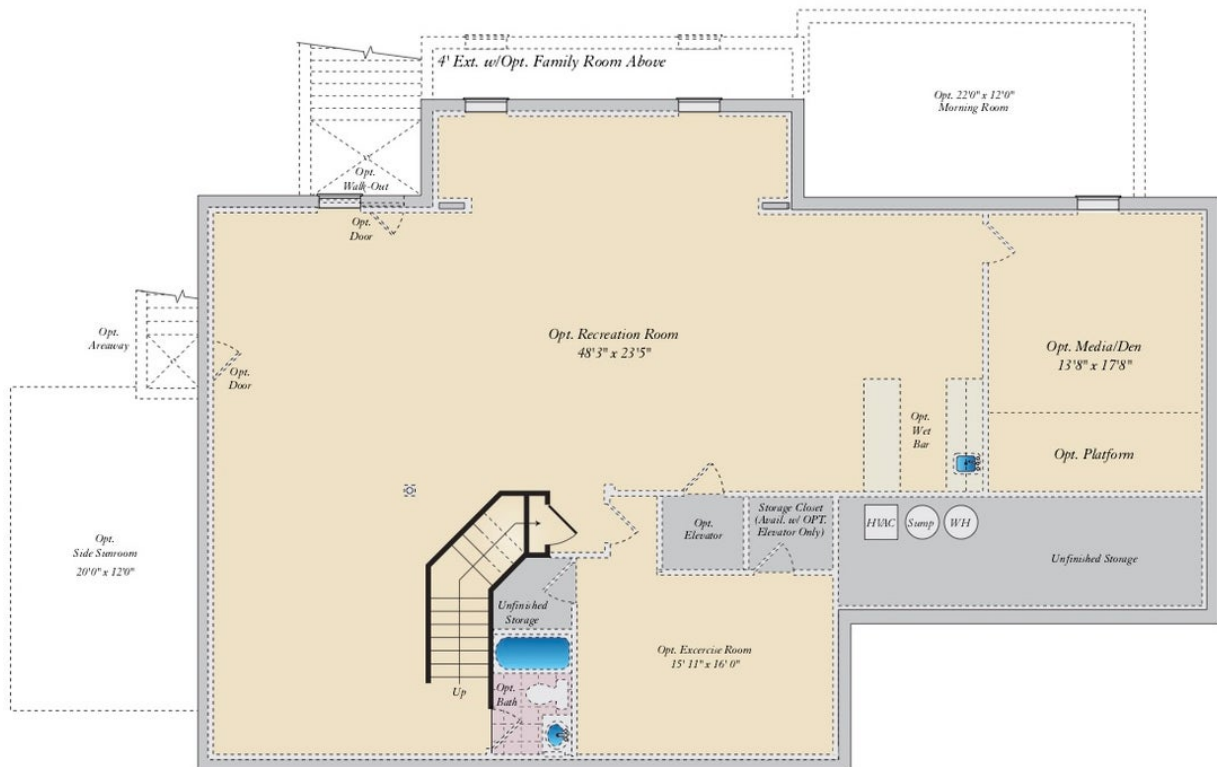


OPT. BUDDY BATH WITH OPT. 2-STORY
CONSERVATORY



OPT. THOMAS'S CHOICE BATH W/ OPT
EXERCISE ROOM

BASEMENT



USE OUR INTERACTIVE FLOOR PLAN TOOL TO DESIGN YOUR NEW HOME.

Visit Caruso Homes Interactive Floor Plans tool to personalize this floor plan into your dream home. Select from hundreds of available options and modify rooms. Then save your designs for future reference or sharing. Additional photos and virtual tours are also available for viewing on our website.