



Single Family

Available In

3 COMMUNITIES
 & ON YOUR LOT

4 - 5 Beds

2.5 - 4.5 Baths

2,720 - 4,729 Sq Ft

The Monterey II plan is a single family home starting at 2,720 square feet, with options for up to 4,729 square feet of living space. The home has a two car garage and several elevations to choose from including several with a covered front porch. Inside the home offers an open floor plan that is perfect for entertaining, with an option to extend the kitchen to add an oversized center island. This home is well-designed with plenty of options for buyers to design a dream family home.

Available Elevations



Elevation 1



Elevation 2

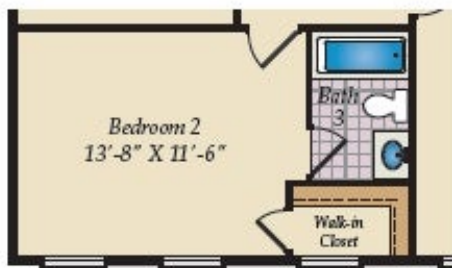


Elevation 3

SECOND FLOOR



OPT. PRIMARY SPA BATH



OPT. BATH 3

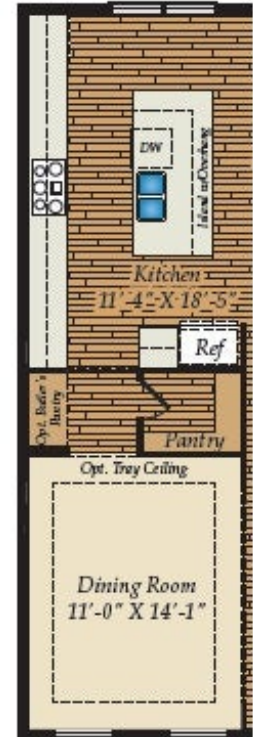
FIRST FLOOR



OPT. MORNING ROOM



OPT. GOURMET KITCHEN



OPT. EXTENDED KITCHEN



OPT. SIDE LOAD GARAGE

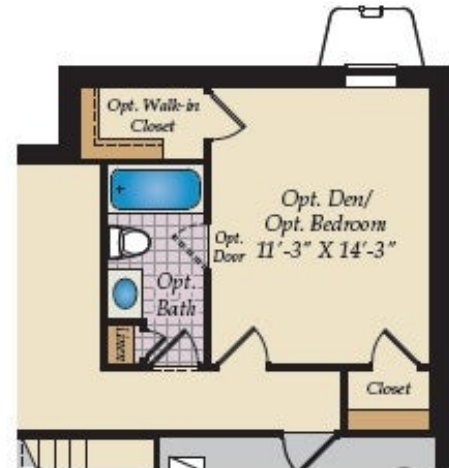
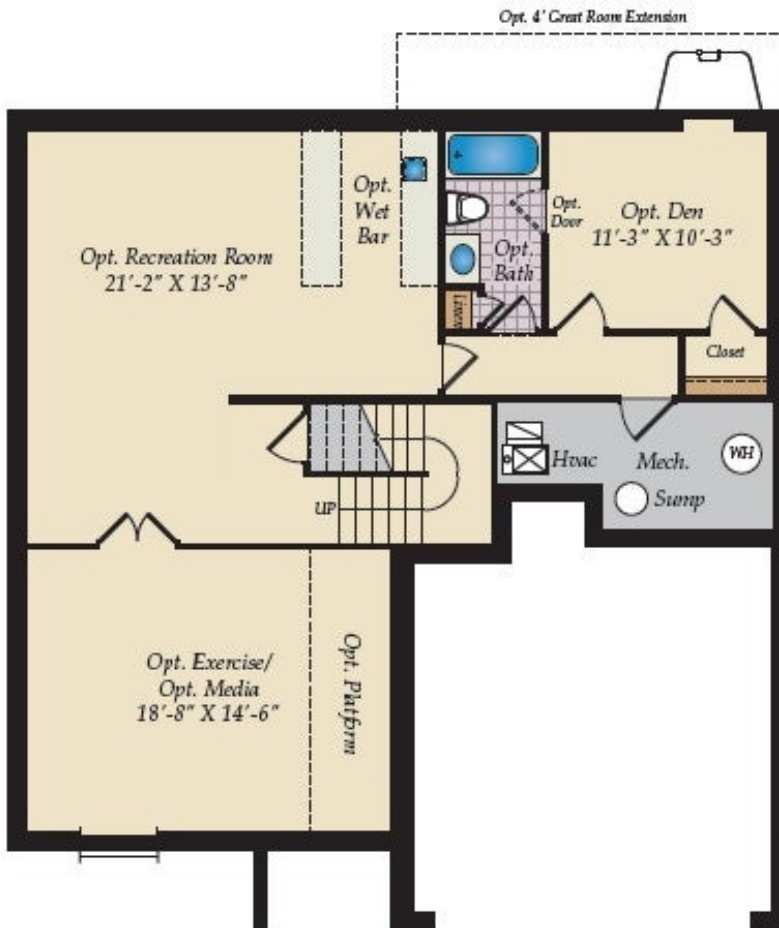


OPT. BOX BAY AT DINING

BASEMENT



OPT. UNFIN. STORAGE OR OPT. FIN. EXT. REC. RM.
W/MORNING ROOM ABOVE



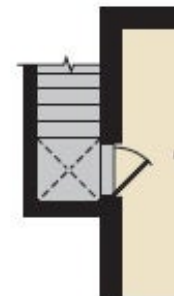
OPT. EXTENDED DEN



OPT. REAR SLIDING GLASS DOOR



OPT. DOUBLE AREAWAY



OPT. SIDE AREAWAY