

**4 - 5 Beds**

**2.5 - 4.5 Baths**

**2,720 - 4,616 Sq Ft**

The Monterey II plan is a single family home starting at 2,720 square feet, with options for up to 4,729 square feet of living space. The home has a two car garage and several elevations to choose from including several with a covered front porch. Inside the home offers an open floor plan that is perfect for entertaining, with an option to extend the kitchen to add an oversized center island. This home is well-designed with plenty of options for buyers to design a dream family home.

## Available Elevations



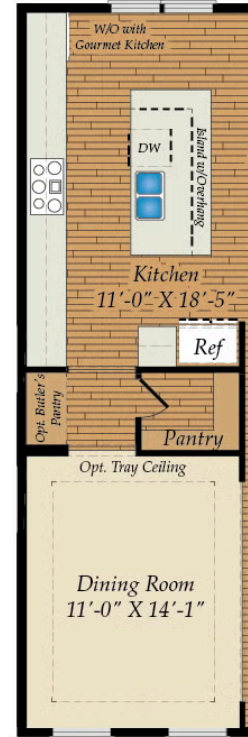
## FIRST FLOOR



OPT. MORNING ROOM



OPT. SIDE LOAD GARAGE

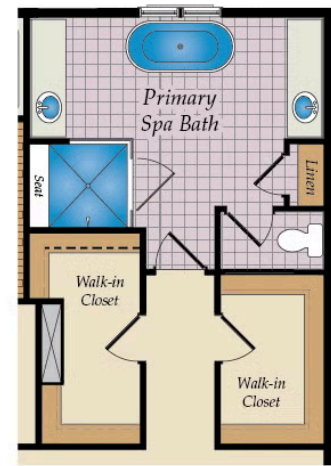


OPT. EXTENDED KITCHEN



OPT. BOX BAY AT DINING

## SECOND FLOOR



OPT. PRIMARY SPA BATH



OPT. BATH 3



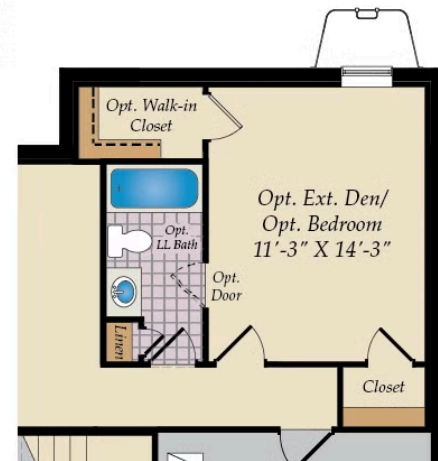
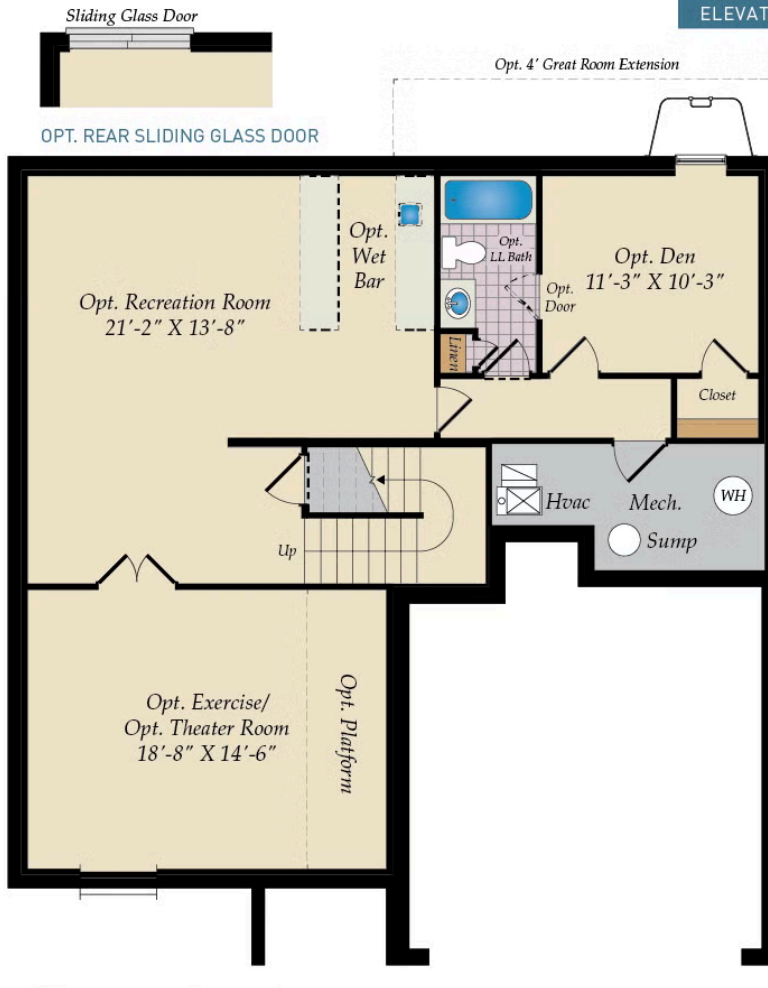
## BASEMENT



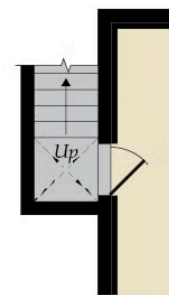
OPT. UNFINISHED STORAGE/OPT. FINISHED EXT. REC. RM.  
W/MORNING ROOM ABOVE



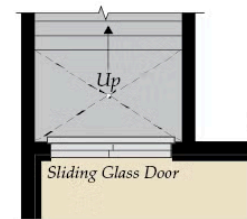
ELEVATION 4 - Shown with Opt. Brick



OPT. EXTENDED DEN



OPT. SIDE AREAWAY



OPT. DOUBLE AREAWAY