



4 - 5 Beds

2.5 - 4 Baths

2,193 - 3,460 Sq Ft

The Michigan plan is a single family home starting at 2,193 square feet, with options for up to 3,460 square feet of living space. The home has a two car garage and several elevations to choose from including several with a covered front porch. Inside the home comes standard with 4 bedrooms and 2.5 baths with the options for up to 5 bedrooms and 4 baths. Your dream home is ready to be designed by you. Select from hundreds of options and features such as a gourmet kitchen, stone or modern fireplaces, in-law suite and basements made for entertaining with a rec room, theater room, and much more!

Available Elevations



SECOND FLOOR



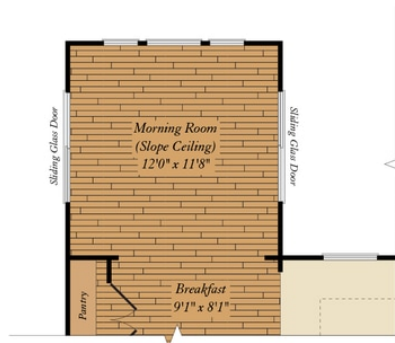
OPT. SUPER BATH



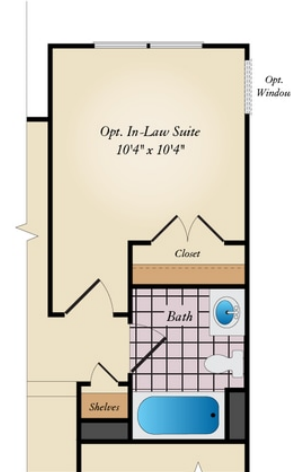
FIRST FLOOR



OPT. GOURMET KITCHEN



OPT. MORNING ROOM



OPT. IN-LAW SUITE