



4 - 6 Beds

2.5 - 4 Baths

3,328 - 5,600 Sq Ft

The Lexington has it all. Home has spacious dining room and home office on either side of stunning 2 story foyer with a 2 landing staircase. First floor owners suite with amazing spa bath. This home boasts our largest closet at approximately 148 square feet. Wonderful open floor plan- size great for entertaining. Kitchen open to family room and breakfast. Wonderful walk in pantry. It has 3 more bedrooms up and an expansive bonus room. Home has opportunity to add amazing outdoor living space and a large walk in attic.

Available Elevations

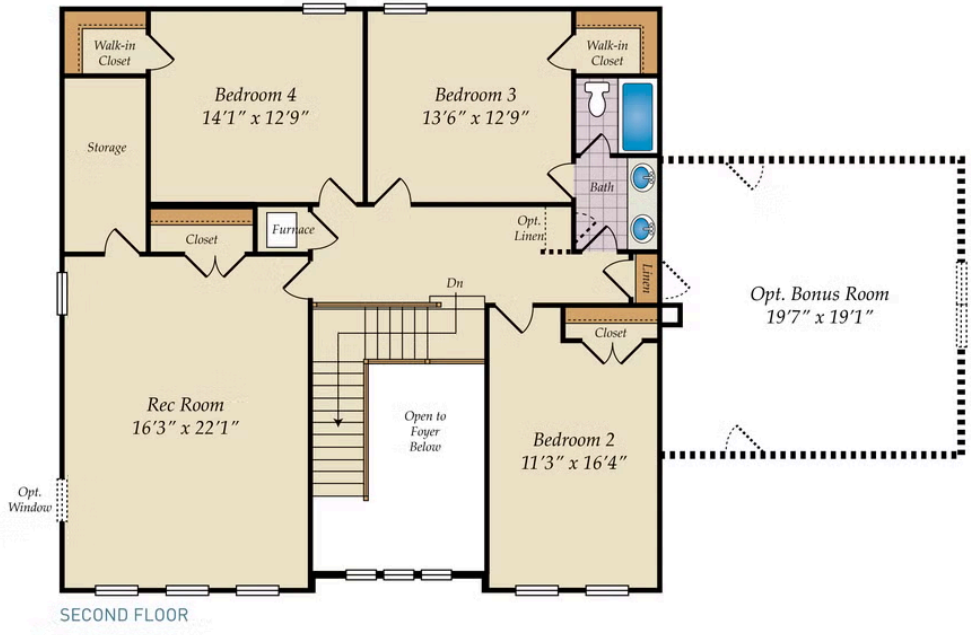


BASEMENT

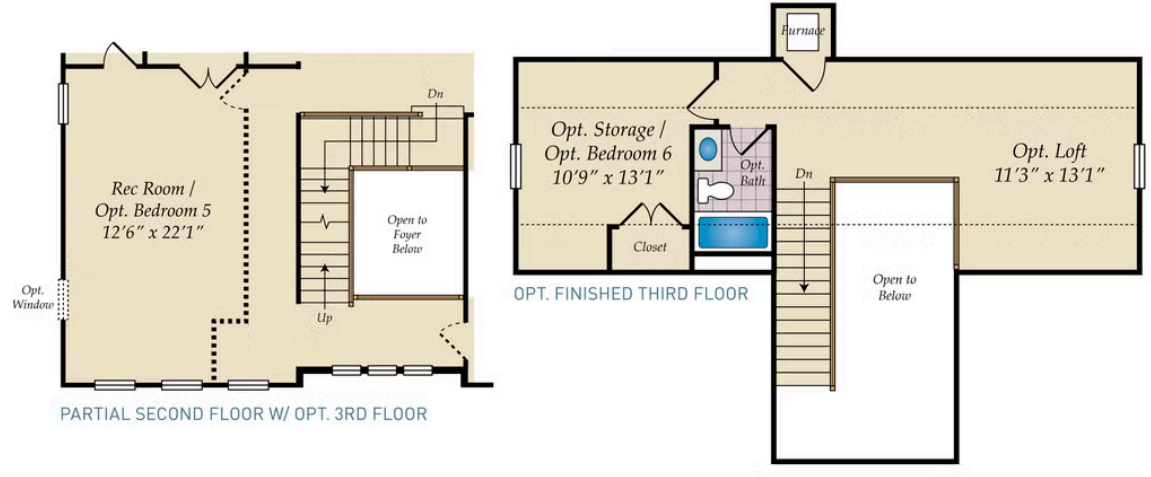


OPT. FINISHED BASEMENT

SECOND FLOOR AND OPT. THIRD FLOOR



SECOND FLOOR

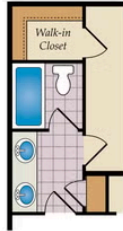


OPT. FINISHED THIRD FLOOR

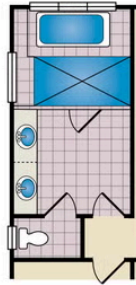
PARTIAL SECOND FLOOR W/ OPT. 3RD FLOOR

Brick/stone fronts, chimneys, bay windows, keystones, exterior trim, garage doors, light fixtures, dormers, and gables shown on elevations are optional features. Actual product specifications may vary in dimension or detail from these drawings. This insert is for illustrative purposes only and is not part of the legal contract. All dimensions are approximate. Many available options are not shown.

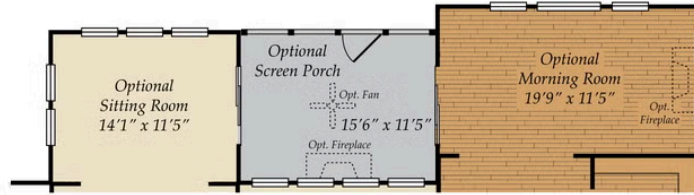
FIRST FLOOR



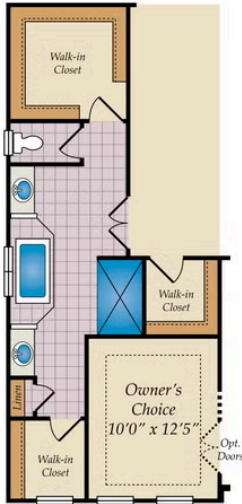
OPT. BATH 3



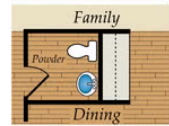
ALTERNATE
OWNER'S BATH



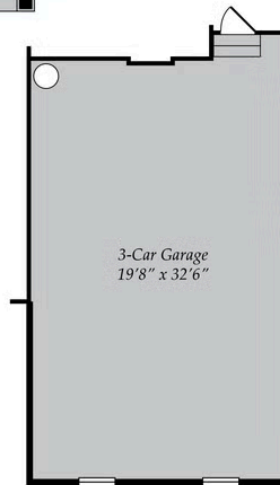
FIRST FLOOR OPTIONS



OPT. CARIBBEAN BATH



OPT. BUTLER'S PANTRY



OPT. 3 CAR GARAGE

Brick/stone fronts, chimneys, bay windows, keystones, exterior trim, garage doors, light fixtures, dormers, and gables shown on elevations are optional features. Actual product specifications may vary in dimension or detail from these drawings. This insert is for illustrative purposes only and is not part of the legal contract. All dimensions are approximate. Many available options are not shown.