



**4 - 6 Beds**

**2.5 - 4 Baths**

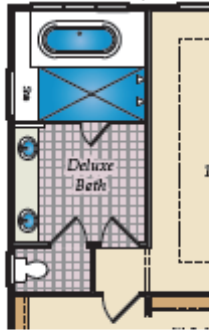
**3,328 - 5,600 Sq Ft**

The Lexington II has it all. This beautiful estate home has a spacious dining room and home office on either side of the stunning 2 story foyer. The main level features an open floor plan, great for entertaining, and a first floor owners suite with an amazing spa bath and our largest walk-in closet. It has 3 more bedrooms upstairs and an expansive loft. With options to add an amazing outdoor living space, a large bonus room, a finished walk-in attic and more, this home has everything a family could need.

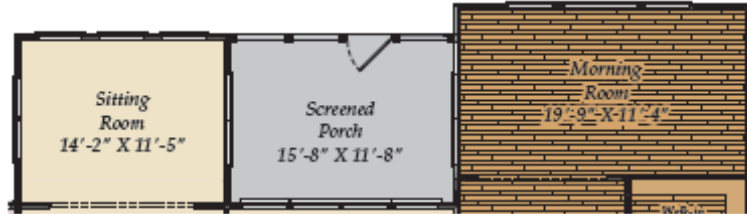
## Available Elevations



FIRST FLOOR



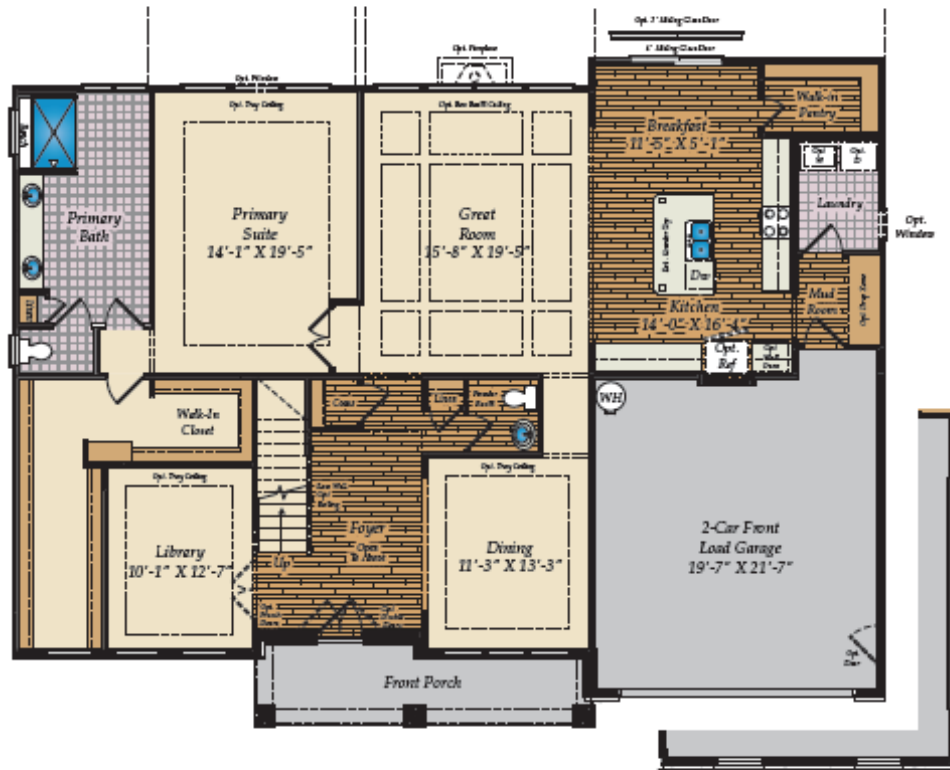
OPT. DELUXE BATH



OPT. SITTING ROOM, SCREENED PORCH AND MORNING ROOM



OPT. PRIMARY CARIBBEAN BATH



OPT. 2-CAR SIDE LOAD GARAGE



OPT. DECK



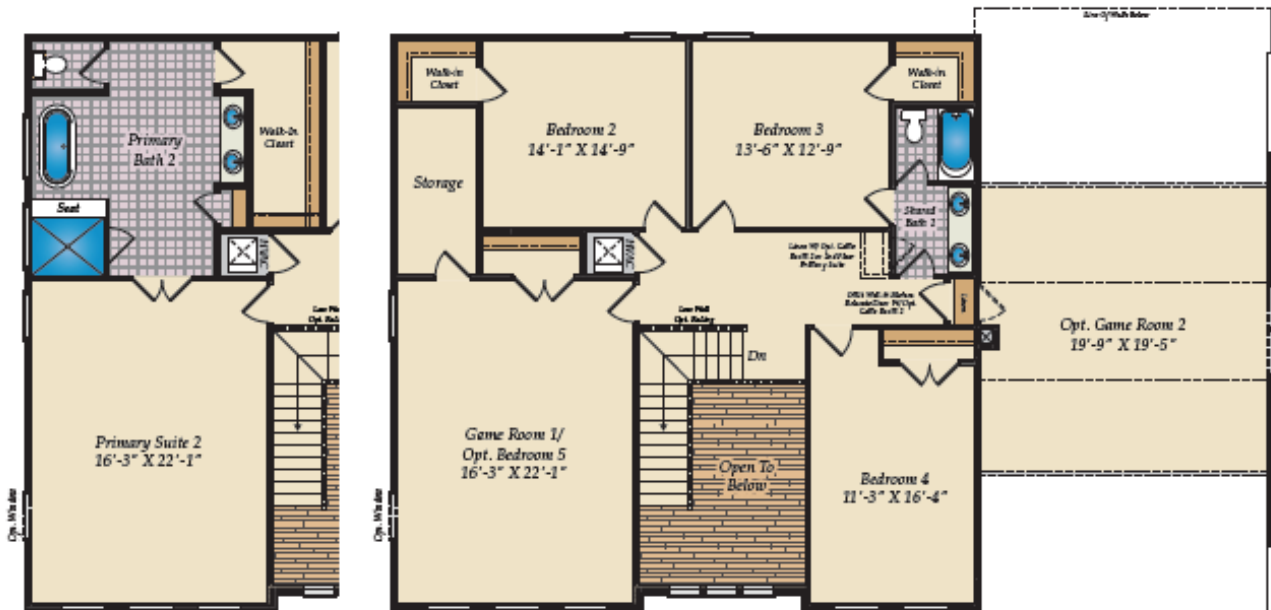
OPT. BUTLER'S PANTRY



OPT. STAIRS TO OPTIONAL BASEMENT

Brick/stone fronts, chimneys, bay windows, keystones, exterior trim, garage doors, light fixtures, dormers, and gables shown on elevations are optional features. Actual product specifications may vary in dimension or detail from these drawings. This insert is for illustrative purposes only and is not part of the legal contract. All dimensions are approximate. Many available options are not shown.

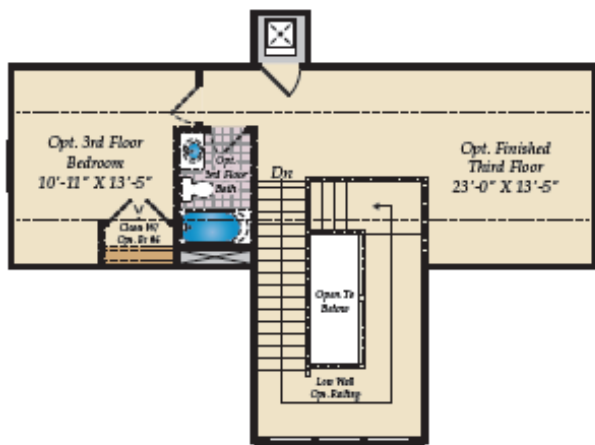
## SECOND FLOOR & OTHER OPTIONS



OPT. PRIMARY SUITE 2



OPT. 3-CAR GARAGE



OPT. FINISHED THIRD FLOOR



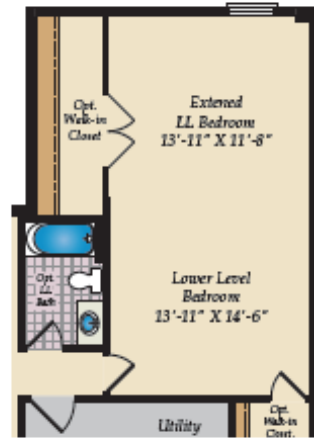
OPT. SHARED BATH 2

Brick/stone fronts, chimneys, bay windows, keystones, exterior trim, garage doors, light fixtures, dormers, and gables shown on elevations are optional features. Actual product specifications may vary in dimension or detail from these drawings. This insert is for illustrative purposes only and is not part of the legal contract. All dimensions are approximate. Many available options are not shown.

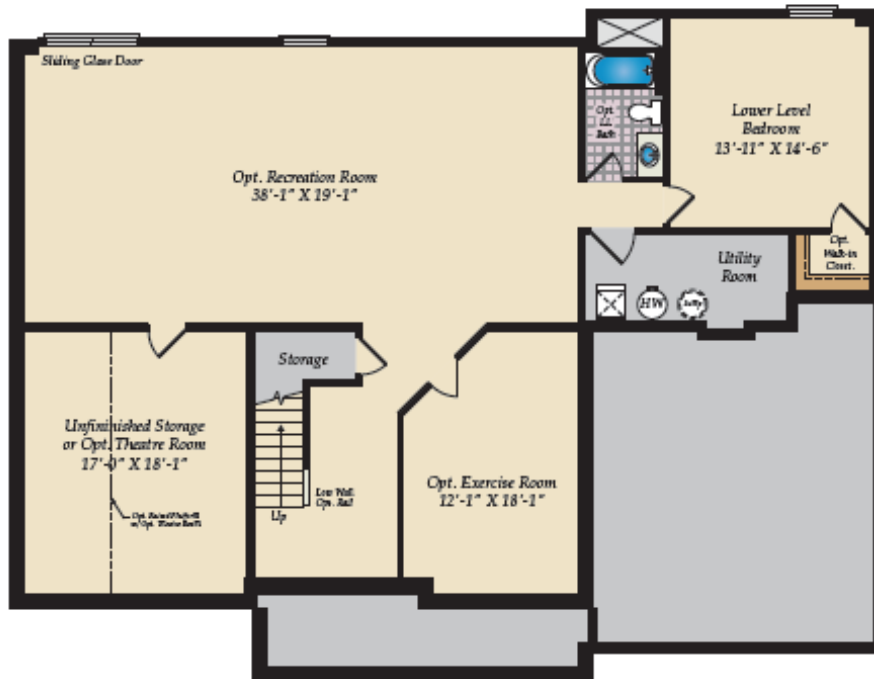
OPT. BASEMENT



OPT. RECREATION ROOM EXTENSION  
W/ SITTING ROOM ABOVE



OPT. BONUS ROOM EXTENSION  
W/ MORNING ROOM ABOVE



OPT. FINISHED BASEMENT