



**2 - 3 Beds**

**2 - 3 Baths**

**1,661 - 3,850 Sq Ft**

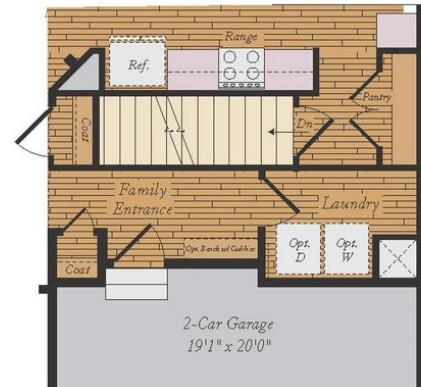
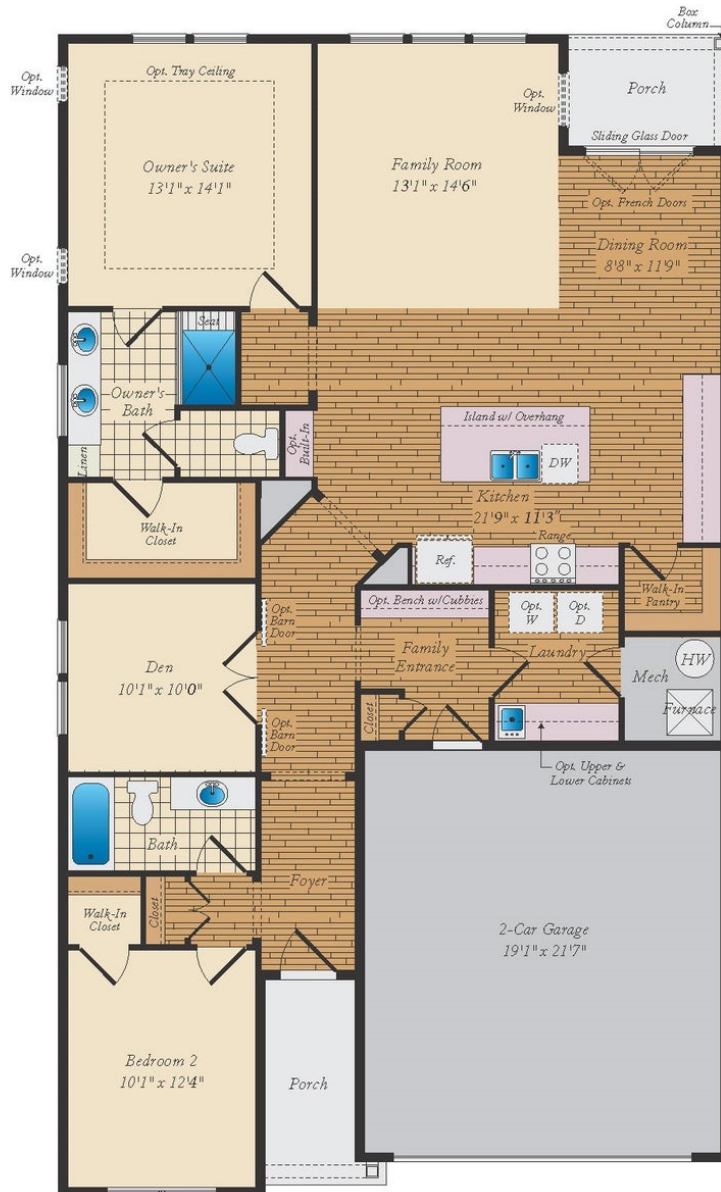
The Kellaway is a cottage-style home that features one-level living with an open floorplan, a large owner suite, a guest room and den. Add a sky basement for additional space and storage. Plenty of options are available to personalize this home.

## Available Elevations



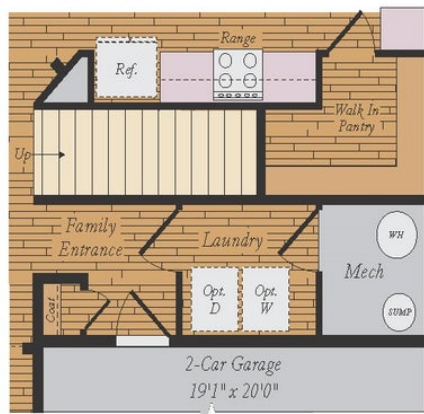
Brick/stone fronts, chimneys, bay windows, keystones, exterior trim, garage doors, light fixtures, dormers, and gables shown on elevations are optional features. Actual product specifications may vary in dimension or detail from these drawings. This insert is for illustrative purposes only and is not part of the legal contract. All dimensions are approximate. Many available options are not shown.

# FIRST FLOOR

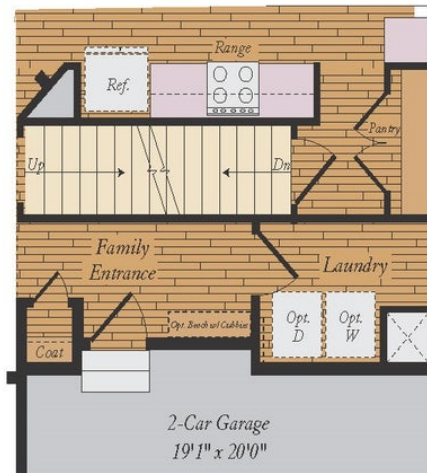


1ST FLOOR W/ OPT. BASEMENT

## OPTIONAL SKY BASEMENT

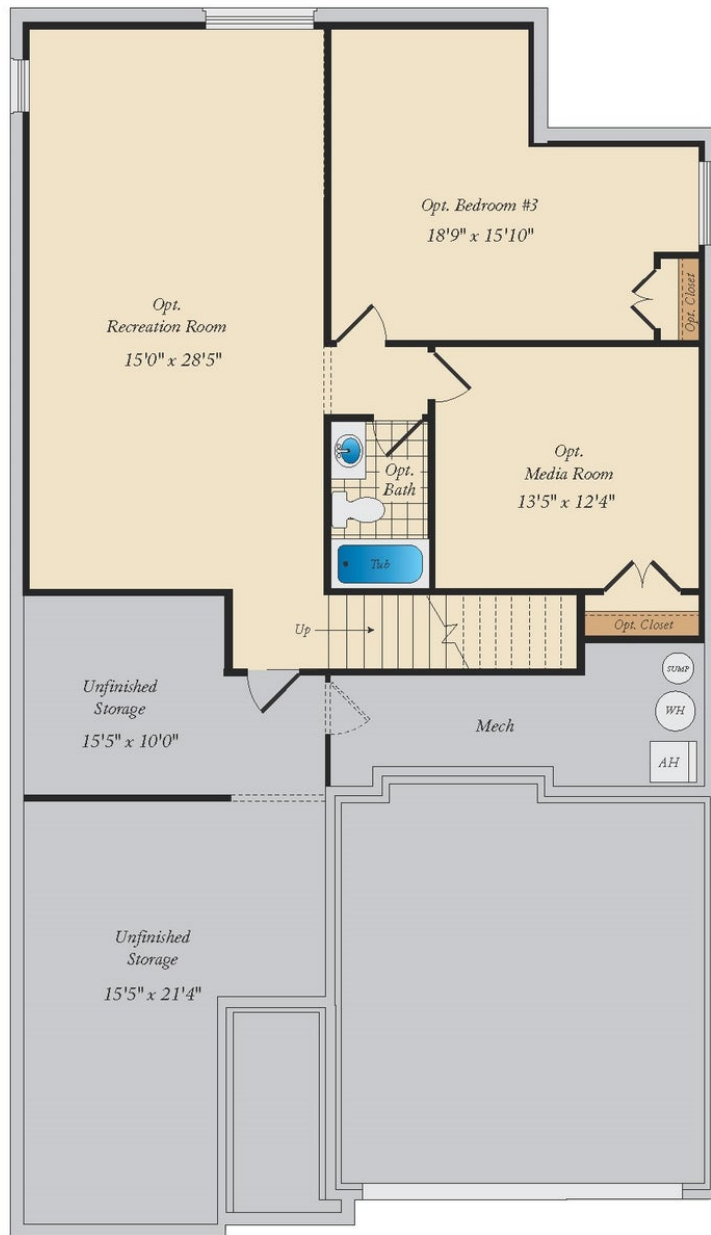


1ST FLOOR W/ OPT. SKY BASEMENT

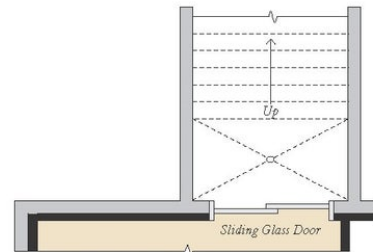


1ST FLOOR W/ OPT. SKY BASEMENT & BASEMENT

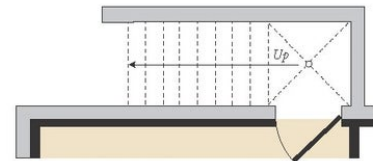
## OPT. BASEMENT



OPT. FINISHED BASEMENT



OPT. DOUBLE AREAWAY



OPT. SINGLE AREAWAY



OPT. WALK-OUT

## ADDITIONAL FEATURES

