



2 - 5 Beds

2.5 - 4.5 Baths

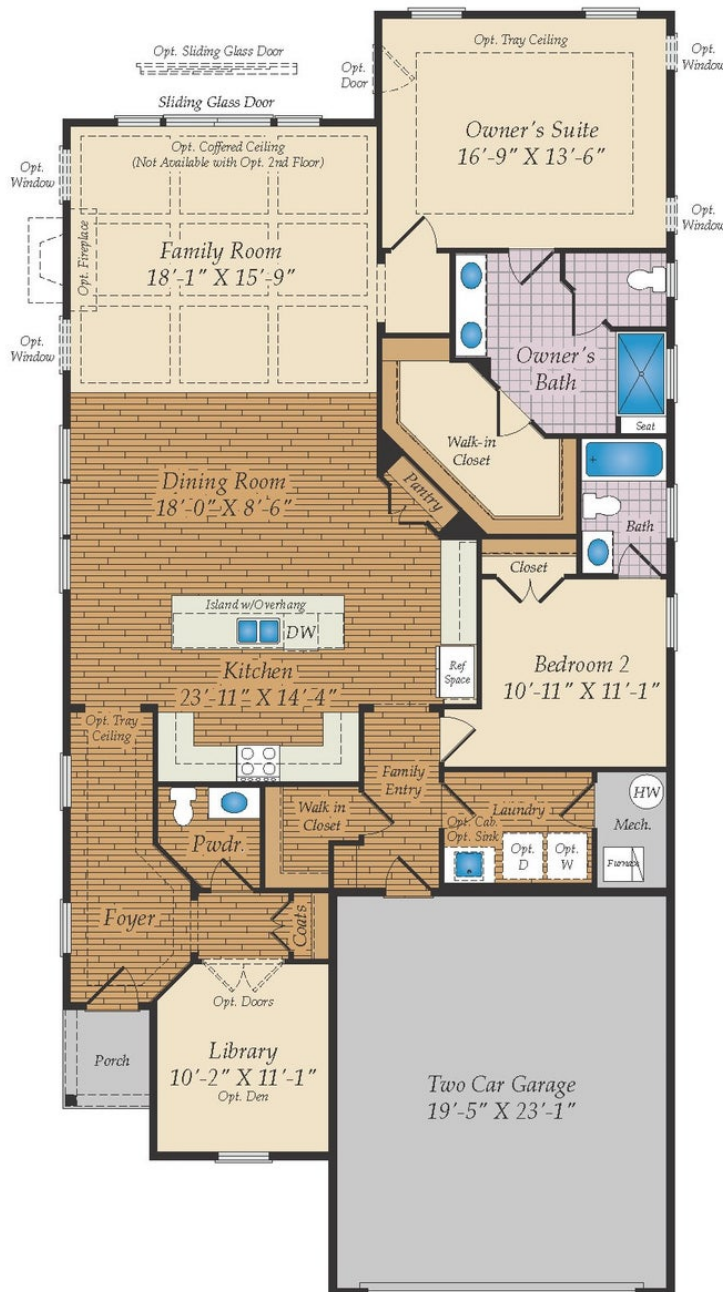
1,966 - 4,850 Sq Ft

The Hayes is a cottage-style home that features one-level living with an open floorplan, a large owner suite, a guest room and den. Add additional living and storage space with the option to add a second floor with a loft and 2 bedrooms and/or add a fully finished basement. Plenty of options are available to personalize this home.

Available Elevations



FIRST FLOOR



OPT. OWNER'S
TUB AND SHOWER

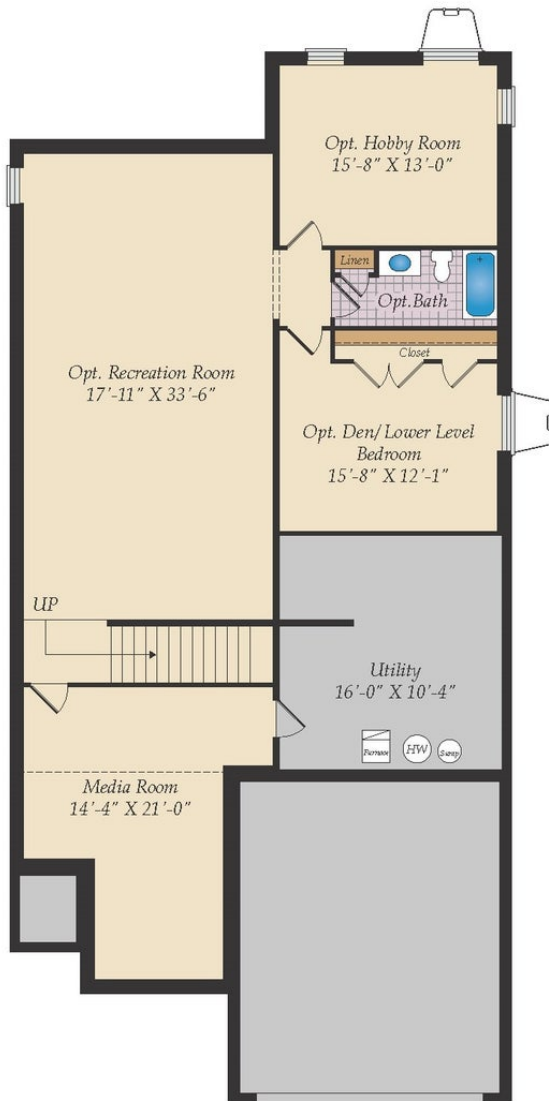


OPT. OWNER'S
WALK IN SHOWER

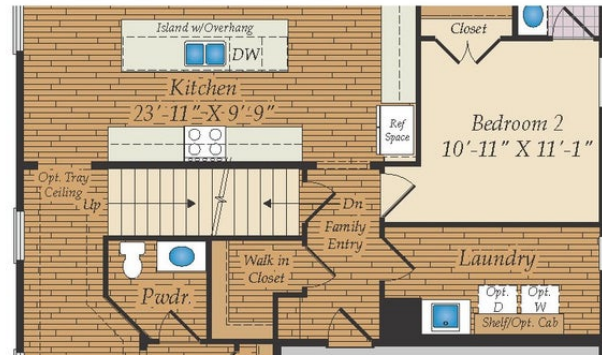


OPT. BEDROOM 3 WITH
FULL BATH

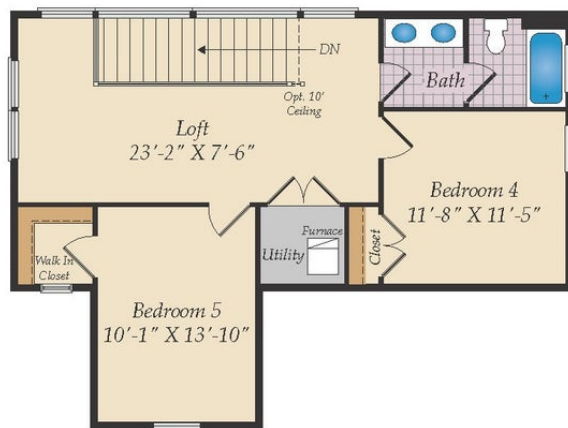
OPTIONAL SKY BASMENT AND OPTIONAL BASMENT



OPT. FINISHED BASEMENT



OPT. 1ST FLOOR W/OPTIONAL BASEMENT &
OPT. SKY BASEMENT



OPT. SKY BASEMENT

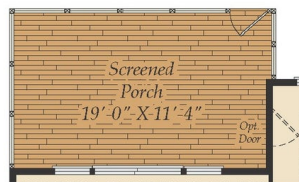
OTHER OPTIONS



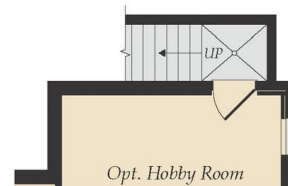
OPT. CONCRETE PATIO



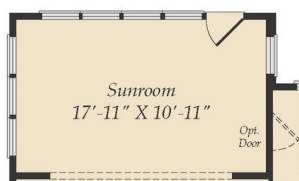
OPT. WALKOUT BASEMENT



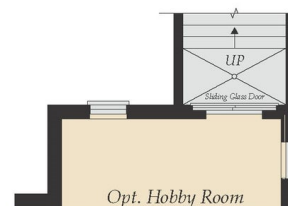
OPT. SCREENED PORCH



OPT. SINGLE AREAWAY



OPT. SUNROOM



OPT. DOUBLE AREAWAY