



4 Beds

2.5 Baths

1,745 Sq Ft

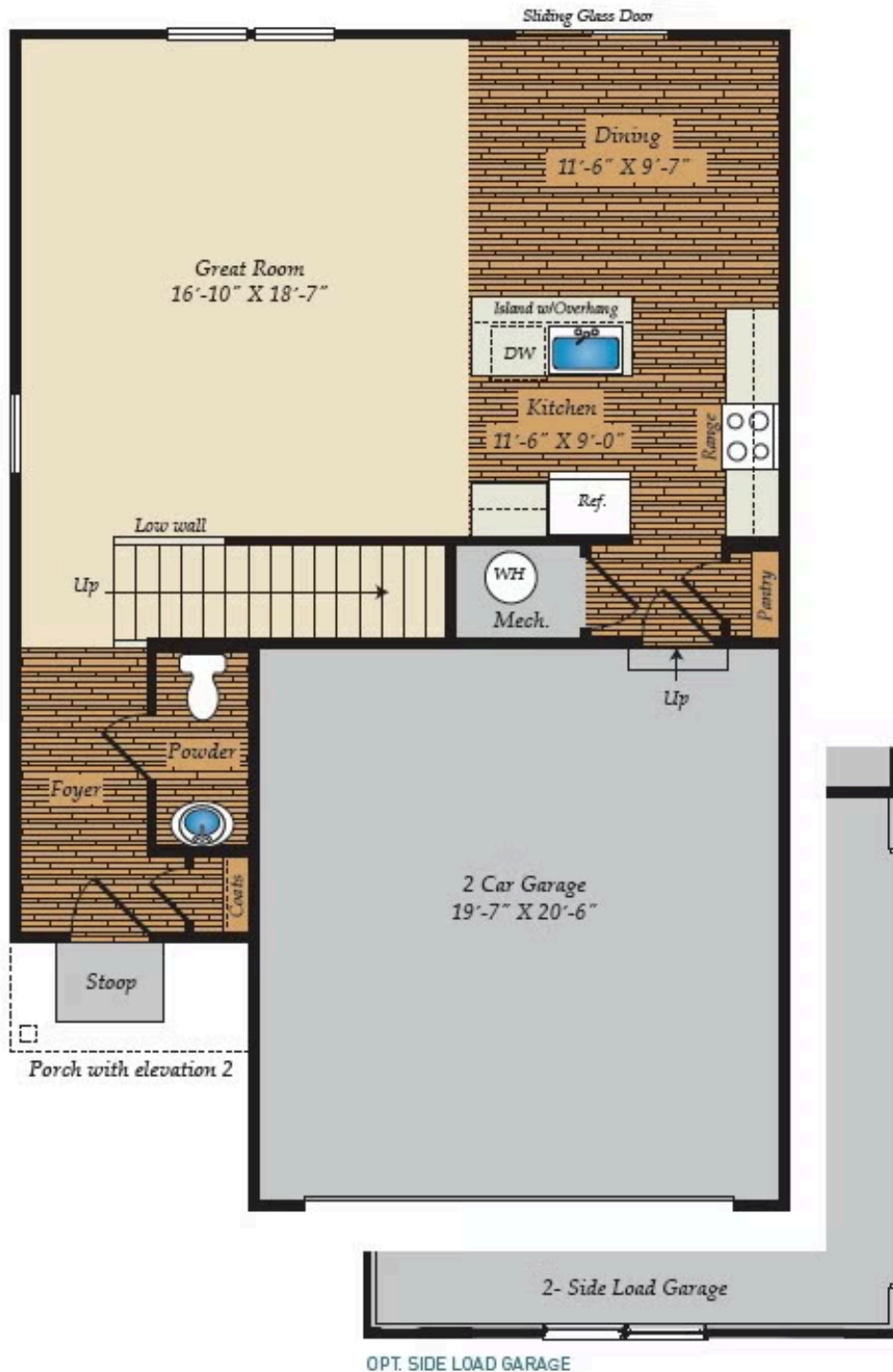
The Gold floor plan is part of our Reward Series, which offers complete packages to provide value, convenience, and a streamlined purchase process for savvy homebuyers.

The smart two-story design of the Gold plan includes an open floor plan, four-bedrooms and plenty of space for the entire family. The main level features a large great room and dining area, a well-designed kitchen with an island and pantry, and a first-floor powder room. The second floor laundry is conveniently located near all bedrooms. The master suite includes a huge walk-in closet and full bath. A full hall bath and linen closet services the secondary bedrooms. This home also features a covered entry, a two-car garage plus many more standard features. Some photos have been virtually staged to better showcase the true potential of rooms and spaces in the home.

Available Elevations



FIRST FLOOR



SECOND FLOOR

