



3 - 5 Beds

2.5 - 4 Baths

2,686 - 3,599 Sq Ft

Our brand new Fontana plan! This floorplan offers plenty of room and options to suit your needs. Enter through the front porch and into the foyer and formal dining room. Walk further in where you are greeted by the sizeable family room, open to the kitchen. Choose to upgrade to a gourmet kitchen, which features a large island, kitchen backsplash, and large pantry, perfect for any chef. Opt for an optional deck or screened porch and enjoy the outdoors.

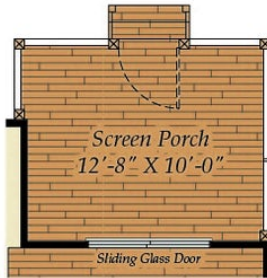
Upstairs comes standard three bedrooms and loft, which can be converted to an additional bedroom. The owner's suite features a luxurious bath, shower, and double vanity. Two walk-in closets provide plenty of extra storage space. Plenty of options available to make this floorplan your own!

****Photos of a similar home are used for representation only and may show options/featured that are not included in the price of this home.**

Available Elevations



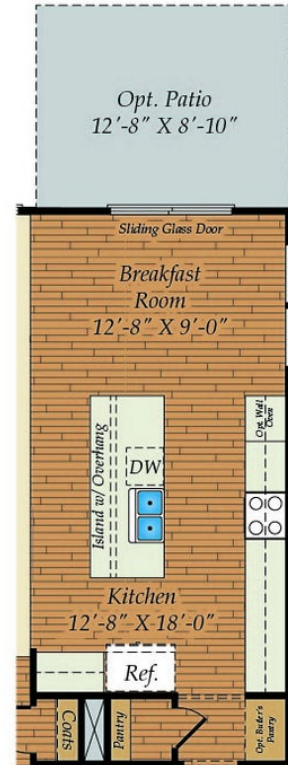
FIRST FLOOR



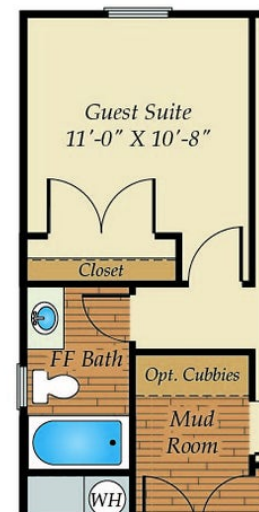
OPT. SCREENED PORCH



OPT. DECK

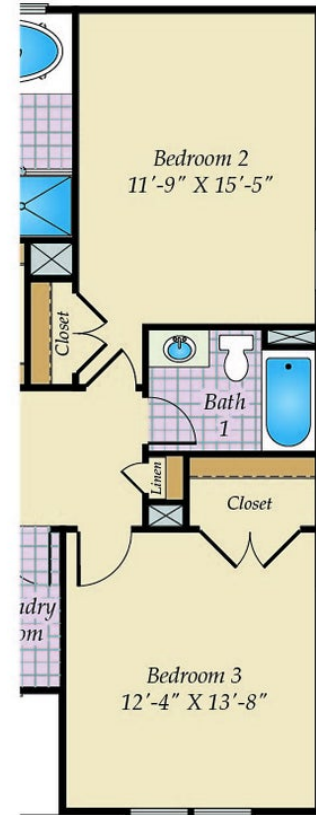
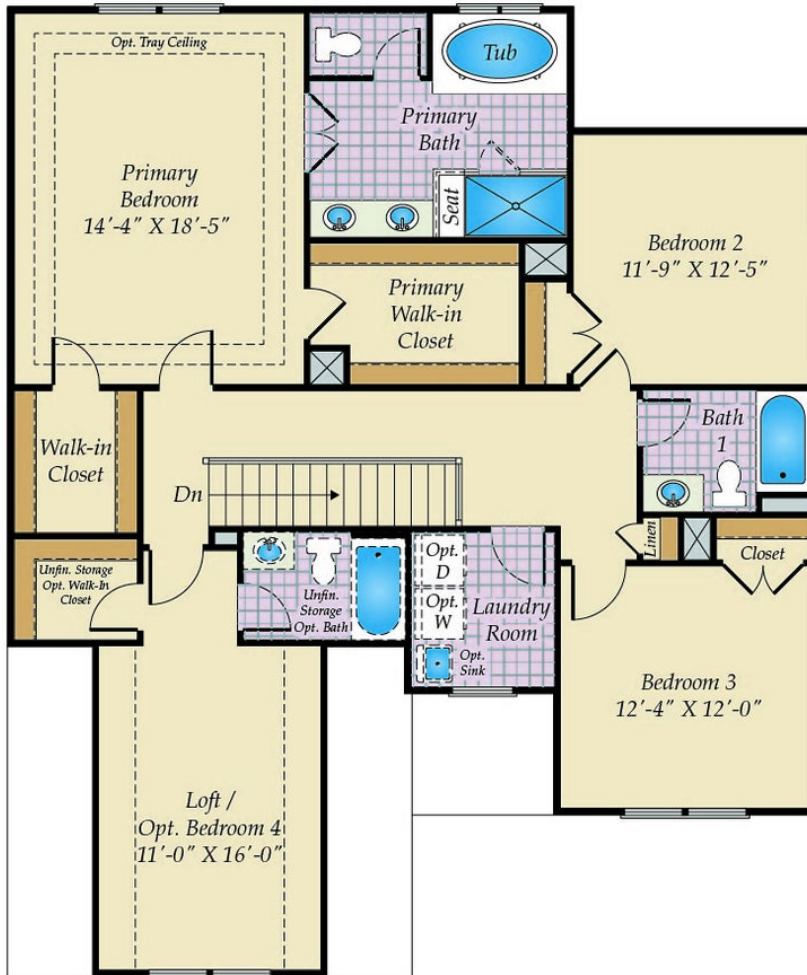


OPT. EXPANDED KITCHEN

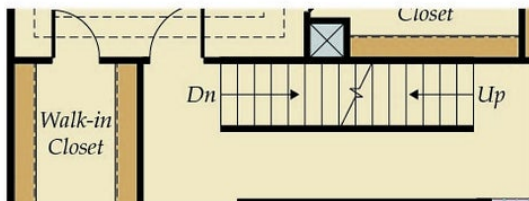


OPT. GUEST SUITE
W. FULL BATH

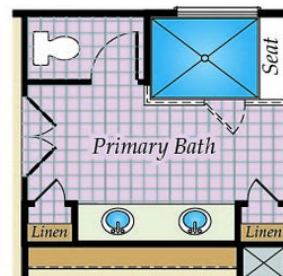
SECOND FLOOR



2ND FLOOR w/OPT. EXT. KITCHEN BELOW

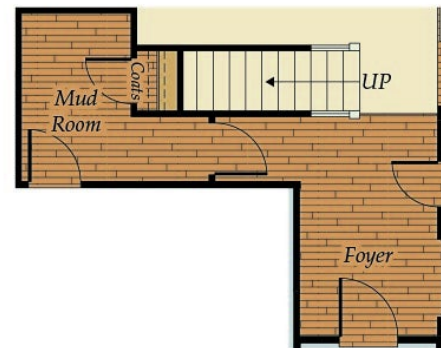
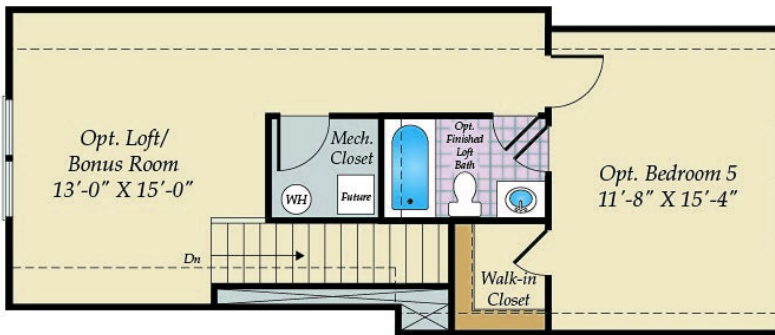


2ND FLOOR w/OPT. 3RD FLOOR



OPT. PRIMARY BATH

OPT. FINISHED THIRD FLOOR AND OTHER OPTIONS



1ST FLOOR w/OPT. 3RD FLOOR



OPT. 3 CAR GARAGE