



3 - 5 Beds

2.5 - 4 Baths

2,686 - 3,599 Sq Ft

The Fontana floorplan offers plenty of room and options to suit your needs. Enter through the front porch and into the foyer and formal dining room. Walk further in where you are greeted by the sizeable family room, open to the kitchen. Choose to upgrade to a gourmet kitchen, which features a large island, kitchen backsplash, and large pantry, perfect for any chef. Opt for an optional deck or screened porch and enjoy the outdoors. Upstairs comes standard three bedrooms and loft, which can be converted to an additional bedroom. The owner's suite features a luxurious bath, shower, and double vanity. Two walk-in closets provide plenty of extra storage space. Plenty of options available to make this floorplan your own!

****Some photos have been virtually staged to better showcase the true potential of rooms and spaces in the home.**

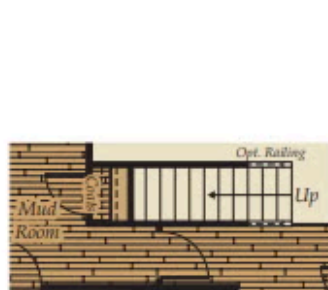
Available Elevations



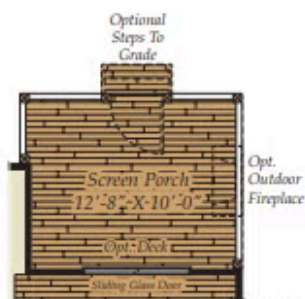
FIRST FLOOR



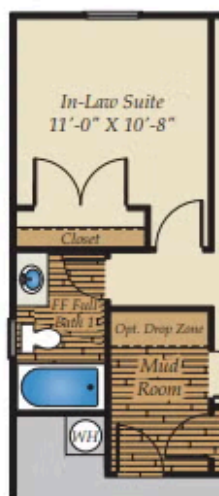
OPT. MULTI-GEN SUITE



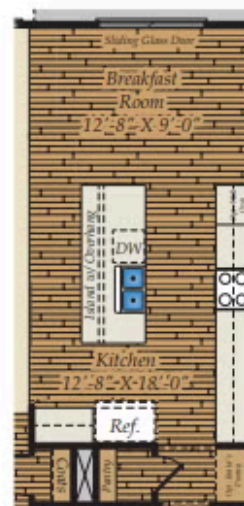
1ST FLOOR w/OPT. 3RD FLOOR



OPT. SCREENED PORCH



OPT. IN-LAW SUITE
W. FIN. FULL BATH

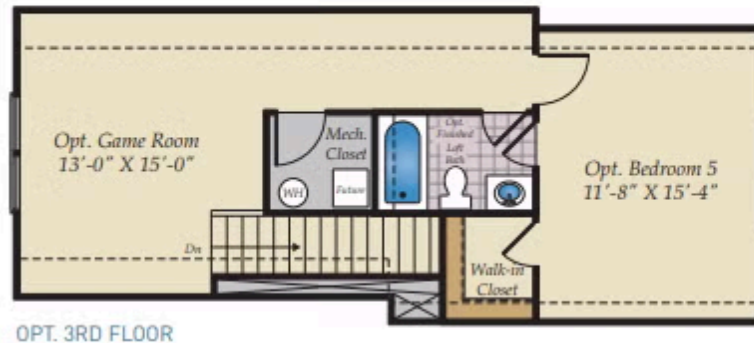


OPT. EXPANDED KITCHEN

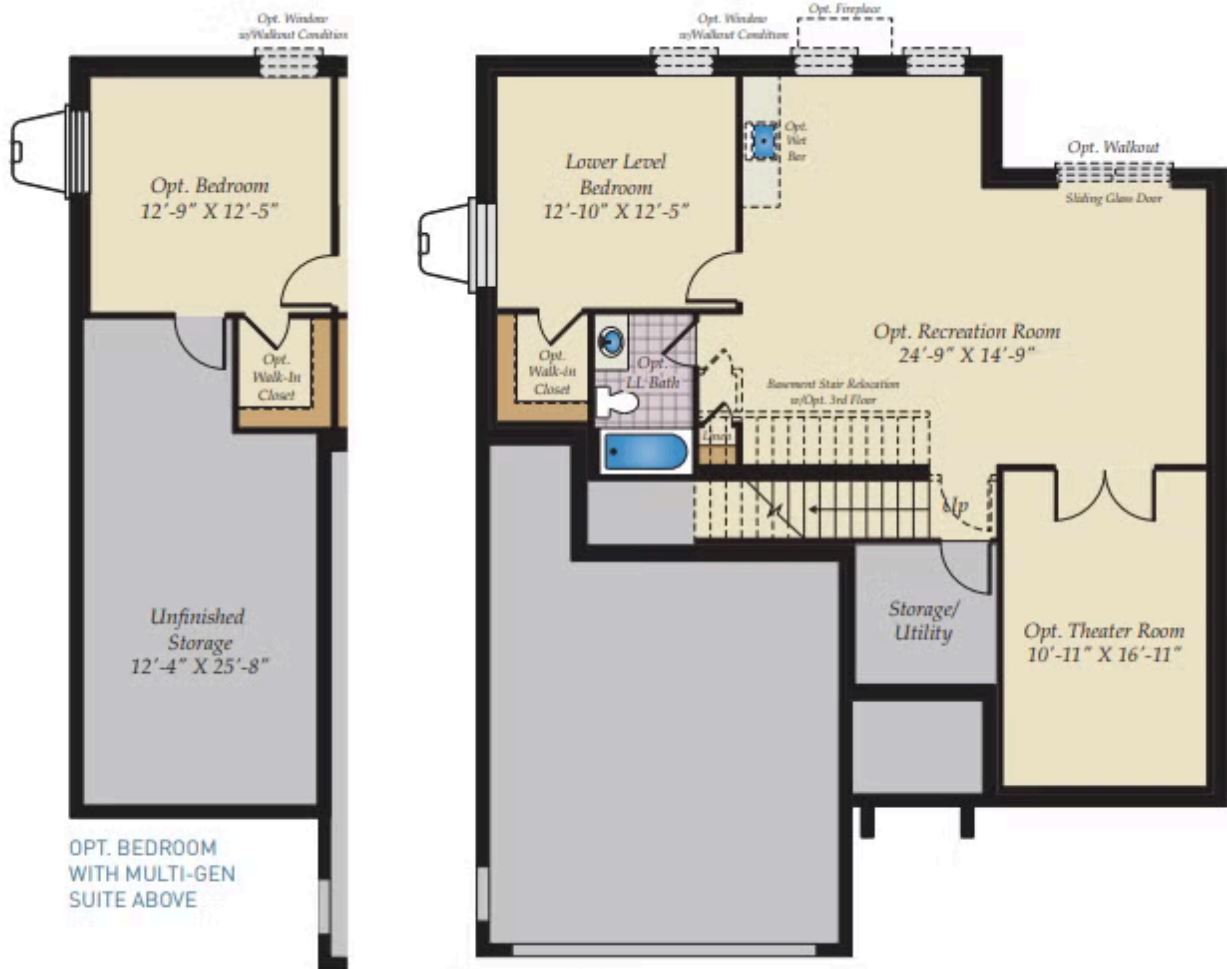
Brick/stone fronts, chimneys, bay windows, keystones, exterior trim, garage doors, light fixtures, dormers, and gables shown on elevations are optional features. Actual product specifications may vary in dimension or detail from these drawings. This insert is for illustrative purposes only and is not part of the legal contract. All dimensions are approximate. Many available options are not shown.



OPT. THIRD FLOOR & OPT. BASEMENT



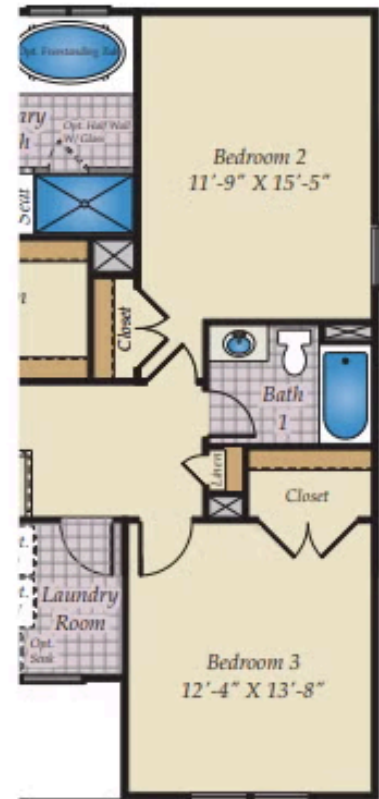
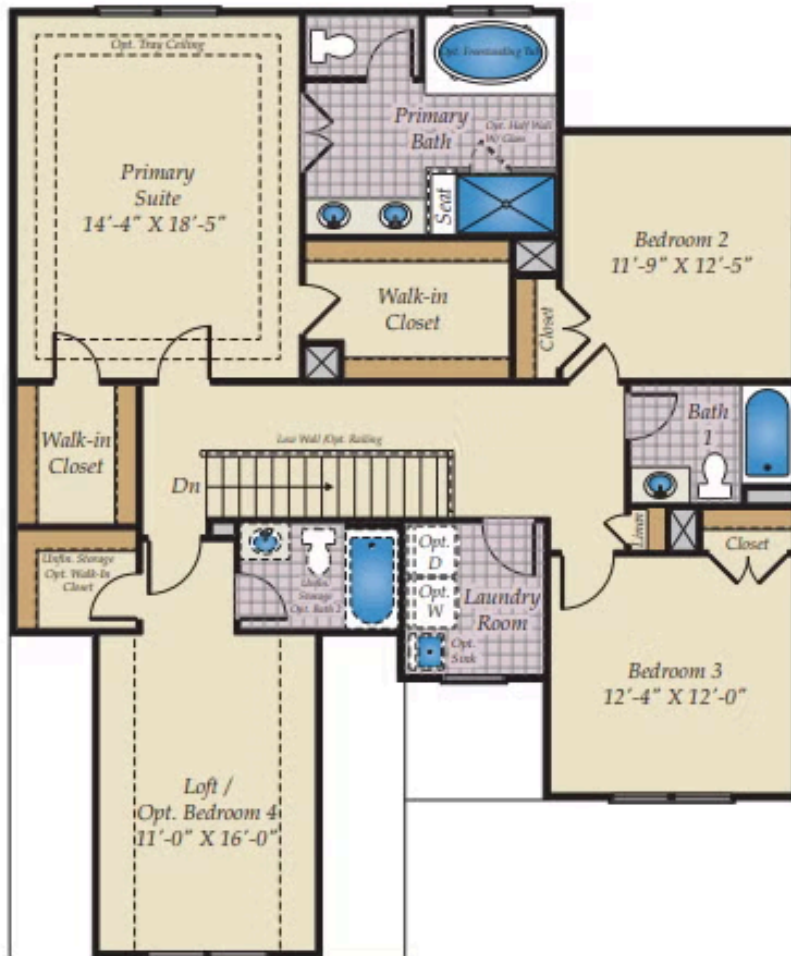
OPT. 3RD FLOOR



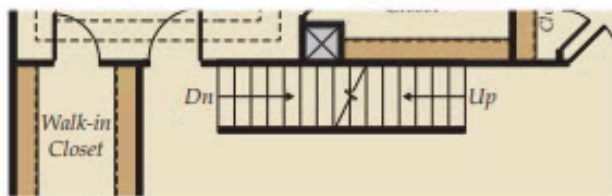
OPT. BEDROOM
WITH MULTI-GEN
SUITE ABOVE

OPT. BASEMENT

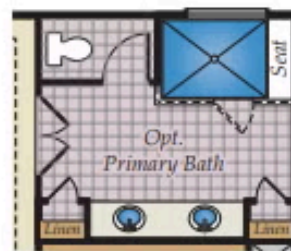
SECOND FLOOR



2ND FLOOR w/OPT. EXT. KITCHEN BELOW



2ND FLOOR w/OPT. 3RD FLOOR



OPT. PRIMARY BATH