



Single Family

Available In

0 COMMUNITY
& ON YOUR LOT

4 - 5 Beds

2.5 - 4.5 Baths

2,858 - 5,431 Sq Ft

The popular Emory II plan is a single family home starting at 2,868 square feet, with options to expand up to 5,431 square feet of living space. The home has a two car garage and many elevations, including brick and stone combination fronts and craftsman styles. Inside, the home comes standard with 4 bedrooms and 2.5 baths with the option to add an additional bedroom and full bath in the basement. This dream home offers many upgrades such as a gourmet kitchen, stone or modern fireplace and a grand owner suite with optional spa bath. Choose from hundreds of features to personalize this home and make it your own.

Available Elevations



Emory II - Elevation 1 with Opt. Full Brick

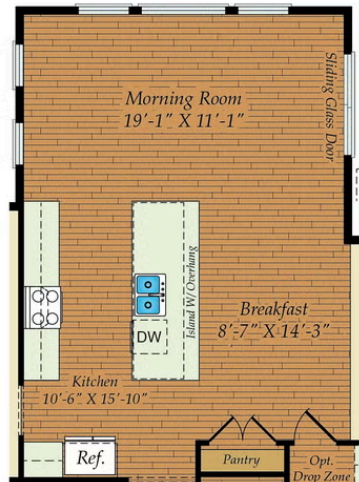


Emory II - Elevation 21 with Side Load Garage and Opt. 2-Story Conservatory

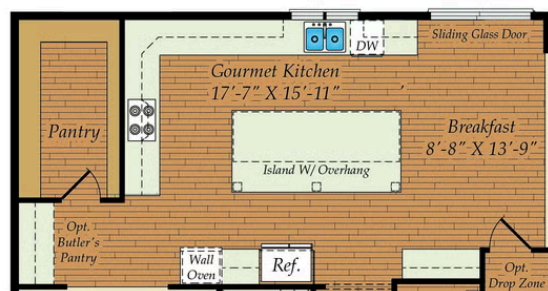


Emory II - Elevation 3 with Opt. Stone & Opt. 1-Story Conservatory

FIRST FLOOR

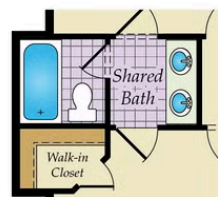
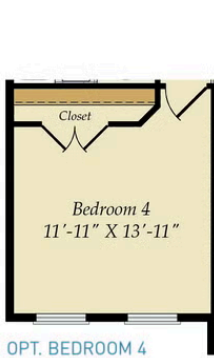
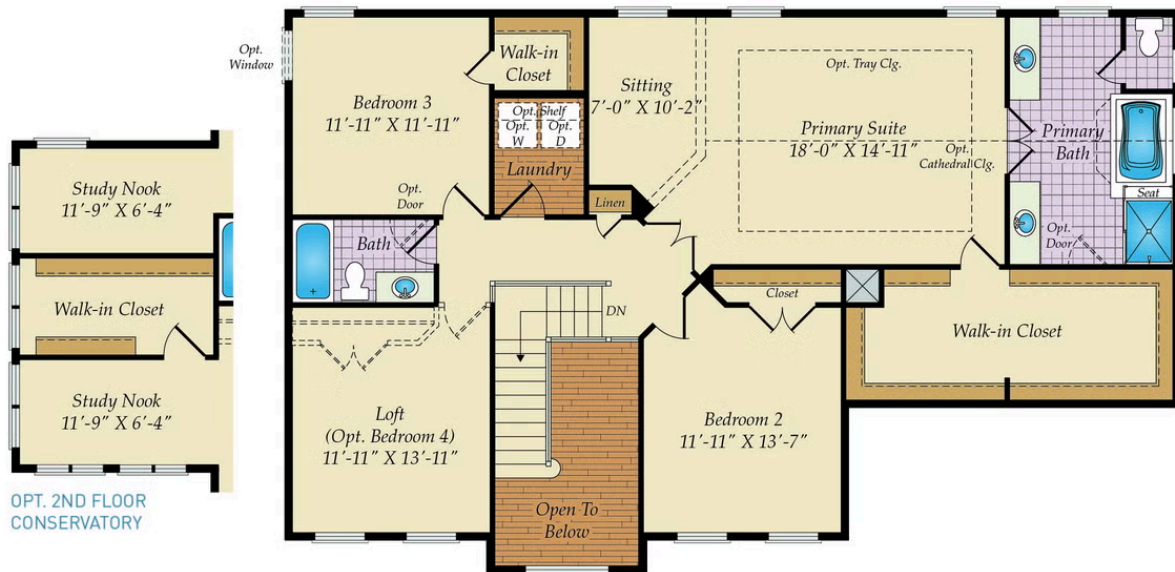


OPT. MORNING ROOM

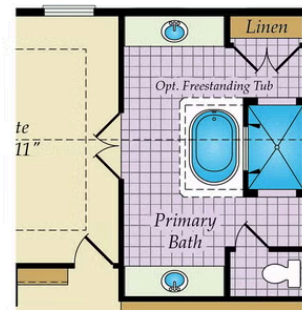
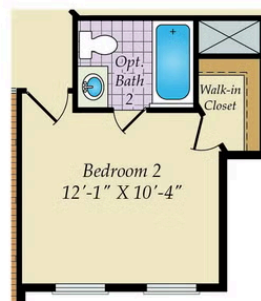


OPT. GOURMET KITCHEN

SECOND FLOOR

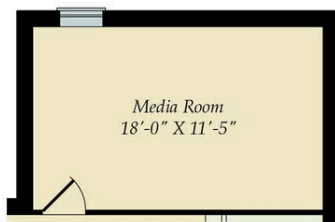


OPT. SHARED BATH
SHOWN WITH OPTIONAL BATH 2

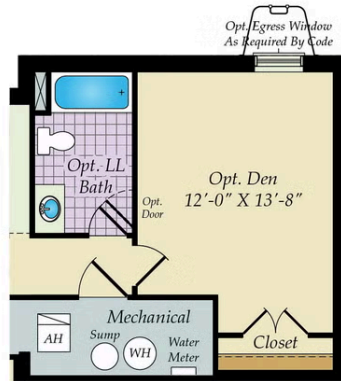


OPT. WALK-THRU
SHOWER BATH

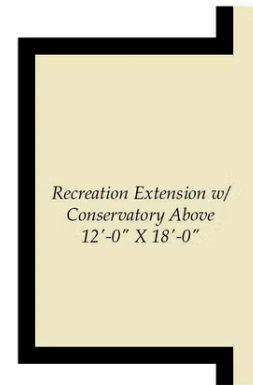
BASEMENT



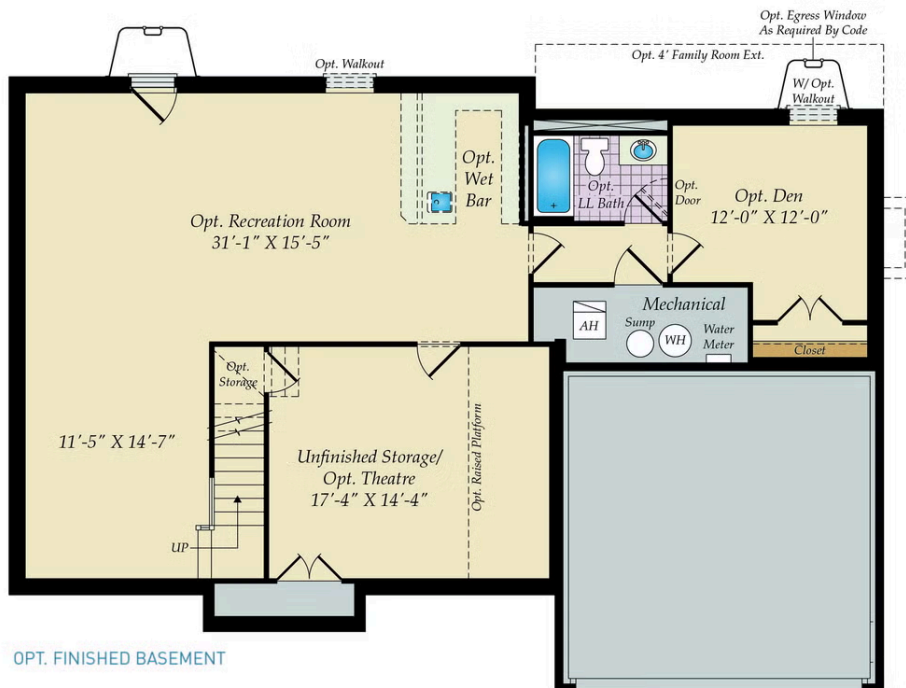
OPT. MEDIA ROOM W/MORNING ROOM
ABOVE



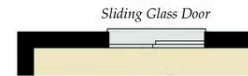
OPT. DEN EXTENSION W/GREAT ROOM
EXT. ABOVE



OPT. REC. EXTENSION W/
CONSERVATORY ABOVE



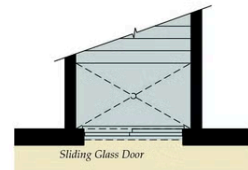
OPT. FINISHED BASEMENT



OPT. WALKOUT BASEMENT



OPT. SINGLE AREAWAY



OPT. DOUBLE AREAWAY