



**4 - 5 Beds**

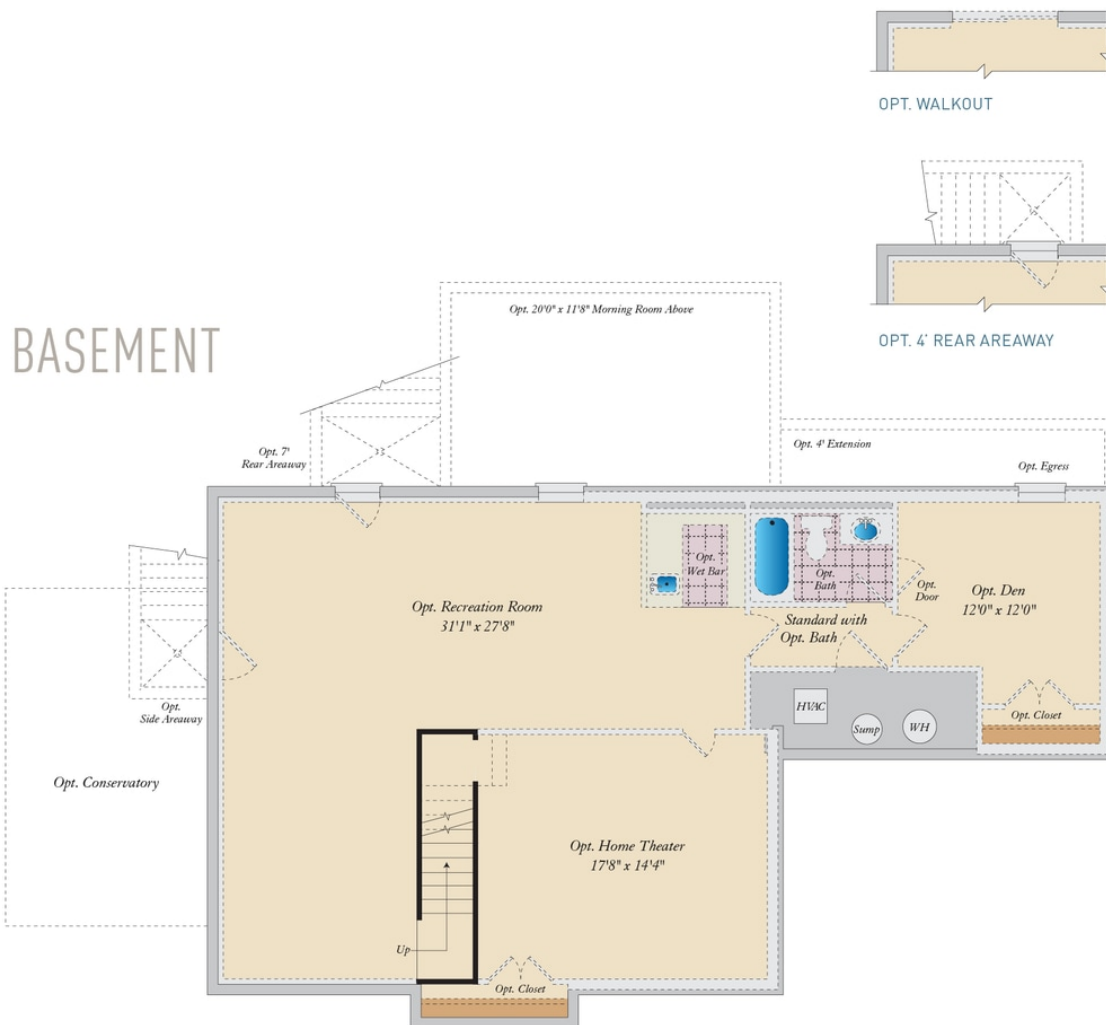
**2.5 - 4.5 Baths**

**2,858 - 5,431 Sq Ft**

The popular Emory II plan is a single family home starting at 2,858 square feet, with options to expand up to 5,431 square feet of living space. The home has a two car garage and many elevations, including brick and stone combination fronts and craftsman styles. Inside, the home comes standard with 4 bedrooms and 2.5 baths with the option to add an additional bedroom and full bath in the basement. This dream home offers many upgrades such as a gourmet kitchen, stone or modern fireplace and a grand owner suite with optional spa bath. Choose from hundreds of features to personalize this home and make it your own.

## Available Elevations

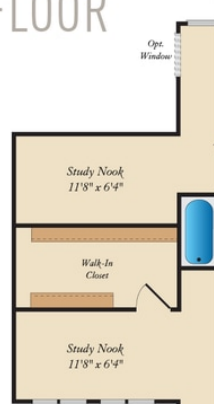




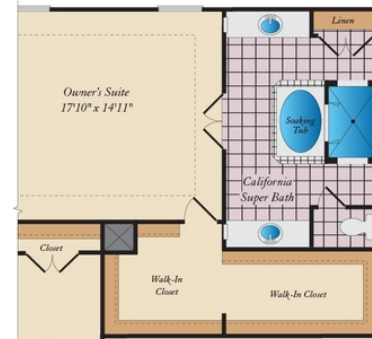
## FIRST FLOOR



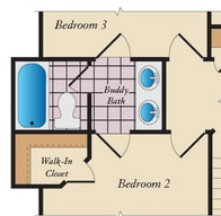
## SECOND FLOOR



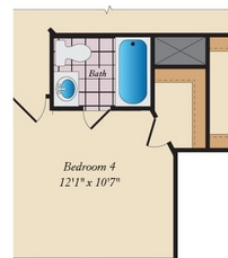
OPT. STUDY NOOKS  
WITH OPT.  
CONSERVATORY ON  
FIRST FLOOR



OPT. WALK-THRU SHOWER



OPT. BUDDY BATH  
AVAILABLE W/ OPT. 3RD  
BATH



OPT. 3RD BATH