



Single Family

Available In

0 COMMUNITY
& ON YOUR LOT

4 - 5 Beds

2.5 - 4.5 Baths

2,858 - 5,431 Sq Ft

The popular Emory II Craftsman plan is a single-family home starting at 2,858 square feet, with options to expand up to 5,431 square feet of living space. The home has a two car garage and many elevations, including brick and stone combination fronts and craftsman styles. Inside, the home comes standard with 4 bedrooms and 2.5 baths with the option to add an additional bedroom and full bath in the basement. This dream home offers many upgrades such as a gourmet kitchen, stone or modern fireplace and a grand owner suite with optional spa bath. Choose from hundreds of features to personalize this home and make it your own.

Available Elevations



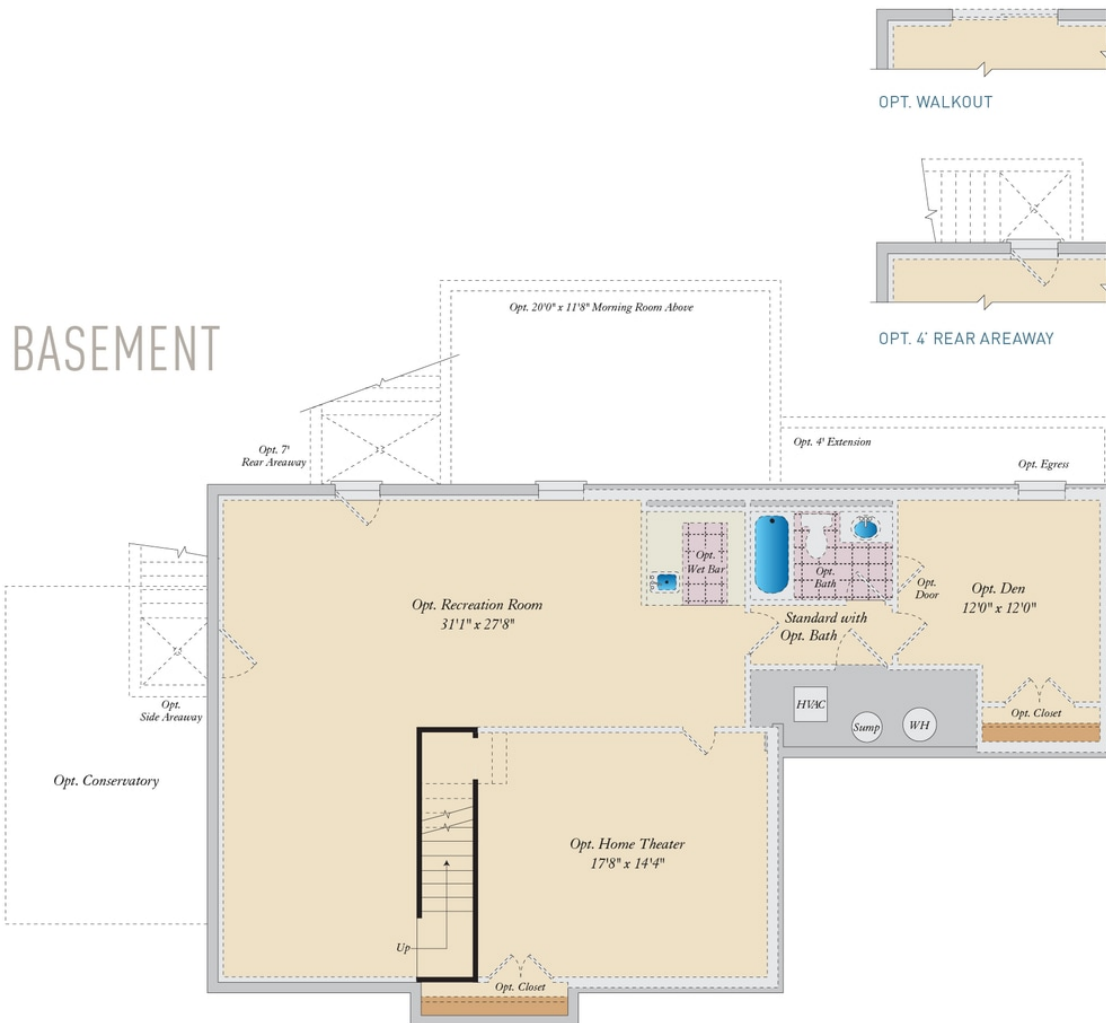
Elevation 31



Elevation 32



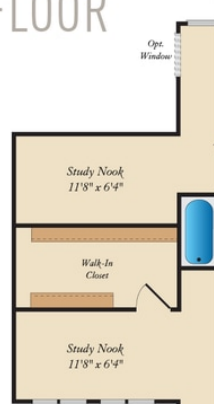
Elevation 33



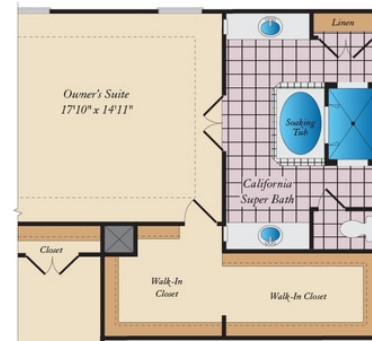
FIRST FLOOR



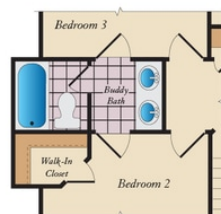
SECOND FLOOR



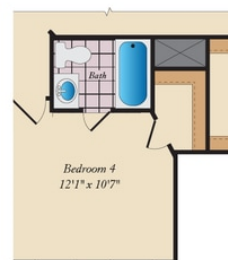
OPT. STUDY NOOKS
WITH OPT.
CONSERVATORY ON
FIRST FLOOR



OPT. WALK-THRU SHOWER



OPT. BUDDY BATH
AVAILABLE W/ OPT. 3RD
BATH



OPT. 3RD BATH