



Single Family

Available In

2 COMMUNITIES
 & ON YOUR LOT

4 - 5 Beds

2.5 - 4.5 Baths

2,858 - 5,431 Sq Ft

The popular Emory II Craftsman plan is a single family home starting at 2,962 square feet, with options to expand up to 5,375 square feet of living space. The home has a two car garage and many elevations, including brick and stone combination fronts and craftsman styles. Inside, the home comes standard with 4 bedrooms and 2.5 baths with the option to add an additional bedroom and full bath in the basement. This dream home offers many upgrades such as a gourmet kitchen, stone or modern fireplace and a grand owner suite with optional spa bath. Choose from hundreds of features to personalize this home and make it your own.

Available Elevations



Emory II Craftsman - Elevation 30 with
 Opt. Dormers

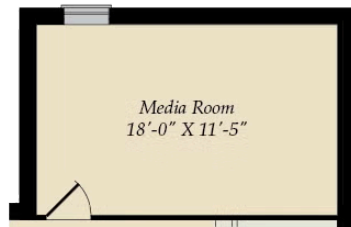


Emory II Craftsman - Elevation 32 with
 Opt. Dormer & Opt. Metal Roof for Front
 Porch and Gable Returns

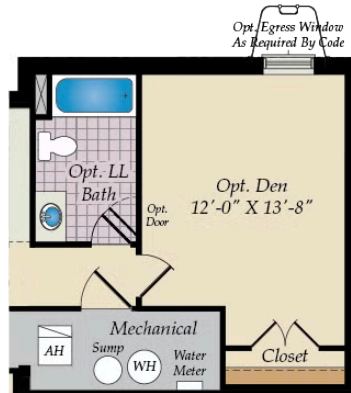


Emory II Craftsman - Elevation 50 with
 Opt. Dormer

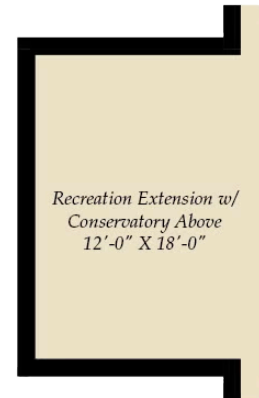
BASEMENT



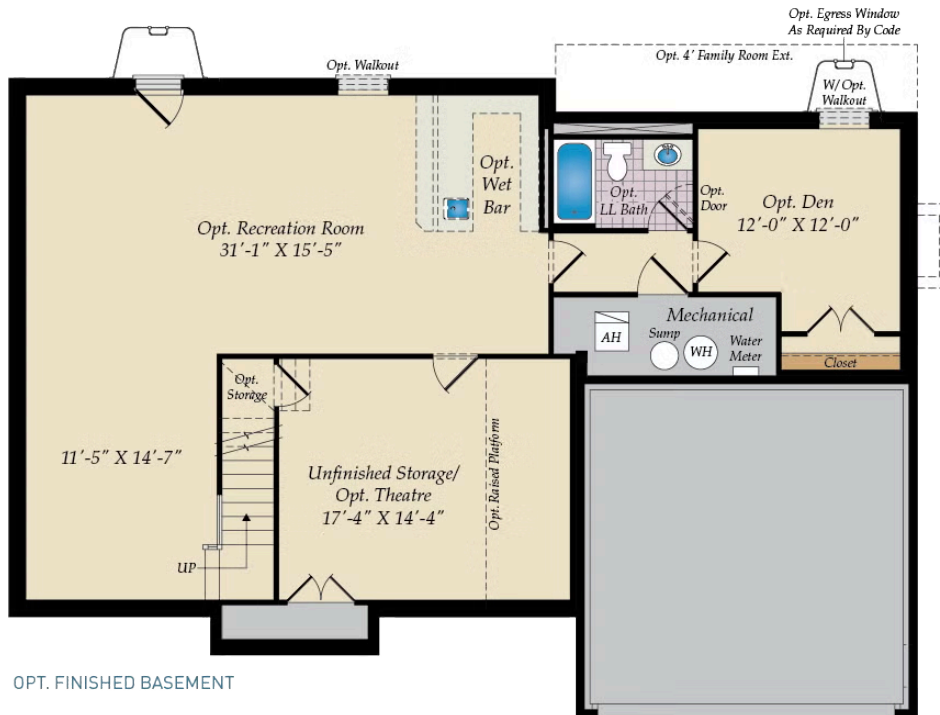
OPT. MEDIA ROOM W/MORNING ROOM
 ABOVE



OPT. DEN EXTENSION W/GREAT ROOM
 EXT. ABOVE



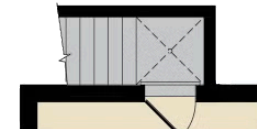
OPT. REC. EXTENSION W/
 CONSERVATORY ABOVE



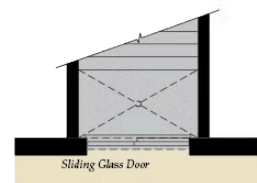
OPT. FINISHED BASEMENT



OPT. WALKOUT BASEMENT

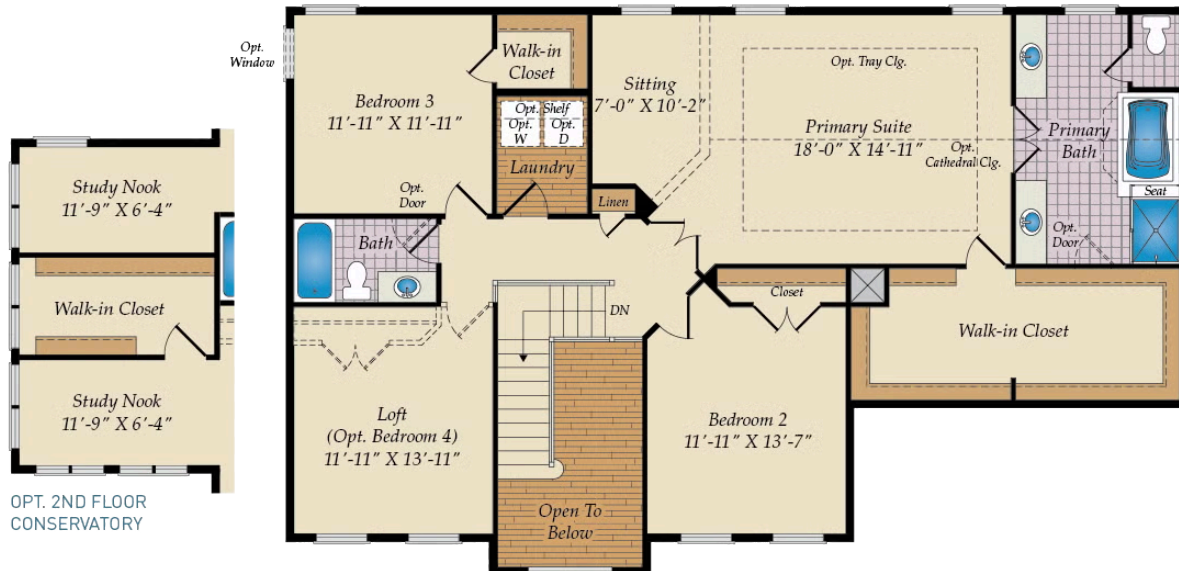


OPT. SINGLE AREAWAY

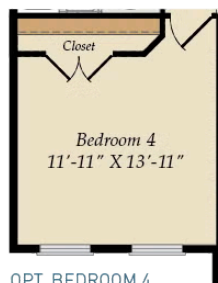


OPT. DOUBLE AREAWAY

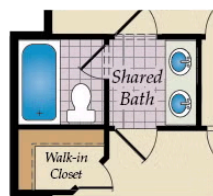
SECOND FLOOR



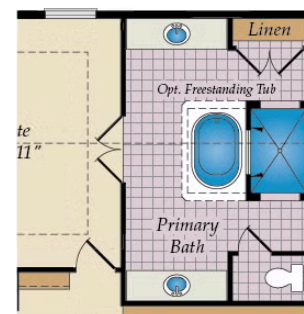
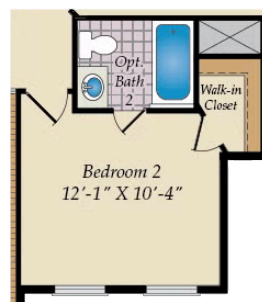
OPT. 2ND FLOOR
 CONSERVATORY



OPT. BEDROOM 4



OPT. SHARED BATH
 SHOWN WITH OPTIONAL BATH 2

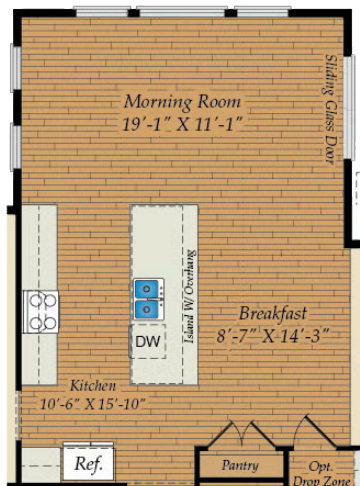


OPT. WALK-THRU
 SHOWER BATH

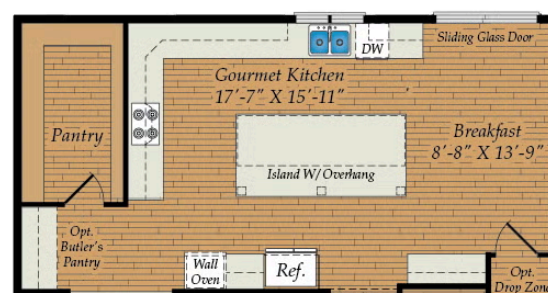
FIRST FLOOR



OPT. 2-CAR SIDE LOAD GARAGE



OPT. MORNING ROOM



OPT. GOURMET KITCHEN