



4 - 5 Beds

2.5 - 4 Baths

2,221 - 3,956 Sq Ft

The Deerfield is a four bedroom floor plan with the option to add an In-Law suite downstairs. Enjoy gathering with family and friends in this open concept home which features a large great room that flows right into the kitchen. A 9 foot island and plenty counter space will please the chef and a formal dining room is perfect for serving up family meals. Upstairs, the large owner's suite offers an ensuite bath with his and her walk-in closets. Three additional bedrooms, a hall bath and a convenient laundry room complete the second floor. An optional third floor provides a loft and full bath for additional living space. Plenty of options and upgrades are available to personalize this home and make it your own!

Available Elevations





Opt. Morning Room



Opt. Screen Porch

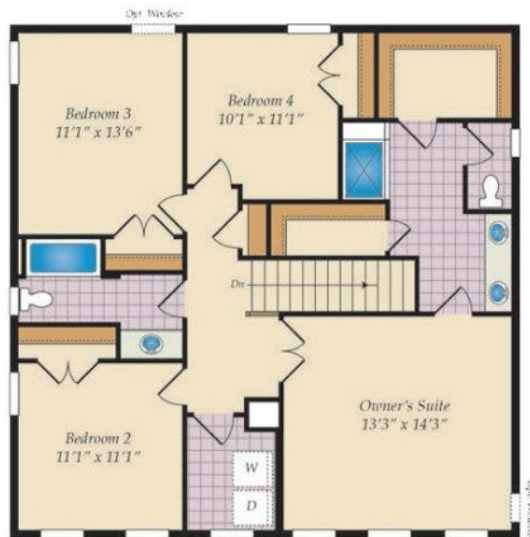


Opt. In-Law Suite

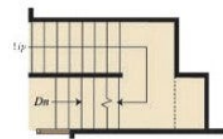


First Floor

Actual product specifications may vary in dimension or detail from these drawings. This insert is for illustrative purposes only and is not part of the legal contract. All dimensions are approximate. Many available options are not shown. Please see community Sales Manager for details. 9/2019



Second Floor



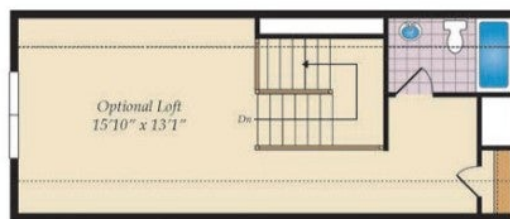
Opt. Stairs w/ Opt. Loft



Opt. Super Bath



Opt. Super Bath w/ Loft



Opt. Third Floor Loft

Actual product specifications may vary in dimension or detail from these drawings. This insert is for illustrative purposes only and is not part of the legal contract. All dimensions are approximate. Many available options are not shown. Please see community Sales Manager for details. 9/2019