



Single Family

Available In

1 COMMUNITY

4 - 5 Beds

2.5 - 3.5 Baths

2,036 - 2,988 Sq Ft

The Dartmouth plan is a single family home starting at 2,036 square feet, with options for up to 2,988 square feet of living space. The home has a two car garage and several elevations to choose from including several with a covered front porch. Inside the home comes standard with 4 bedrooms and 2.5 baths with the option to add an additional bedroom and full bath in the basement. Many available options and finishes allow you to personalize this home to make it your own.

Available Elevations



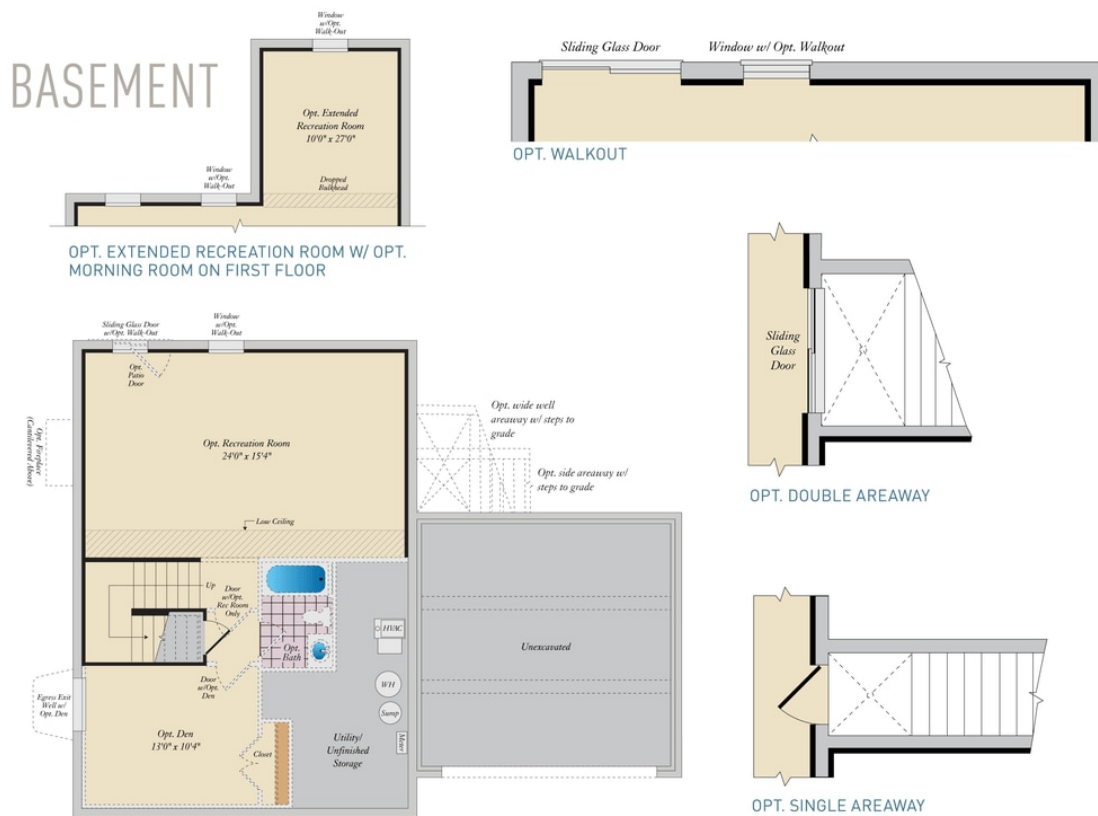
Elevation 1



Elevation 2



Elevation 3



FIRST FLOOR



SECOND FLOOR

