



4 - 6 Beds

3.5 - 6.5 Baths

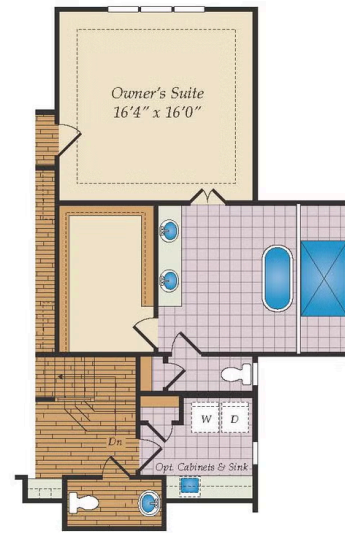
4,015 - 6,960 Sq Ft

The Charlotte is the most amazing home. From the moment you step into the two story foyer you are surrounded by expansive rooms, first floor 9 foot ceilings, two story ceilings in the family room as well with a wall of windows to flood in all that natural light. Huge 21x18 living room/office that can also be transformed into an amazing in-law suite on the first floor. Extremely large dining room that can hold a table that seats up to 16. The beautiful kitchen is open to the huge family room and the breakfast. Perfect design for hosting large get-togethers or great for family dinner. The owners suite is also located on the first floor with amazing spa bath with spacious shower and soaking tub. Upstairs you'll find the perfect Jack and Jill bedrooms and bath, loft, and bedroom 4 with its own bath. Options include adding a game room upstairs and a 3rd car garage. There is also a wonderful walk in attic on the second floor for all the storage you could need.

Available Elevations

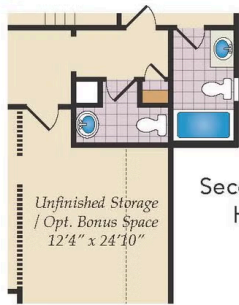


Brick/stone fronts, chimneys, bay windows, keystones, exterior trim, garage doors, light fixtures, dormers, and gables shown on elevations are optional features. Actual product specifications may vary in dimension or detail from these drawings. This insert is for illustrative purposes only and is not part of the legal contract. All dimensions are approximate. Many available options are not shown.

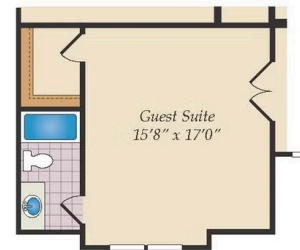




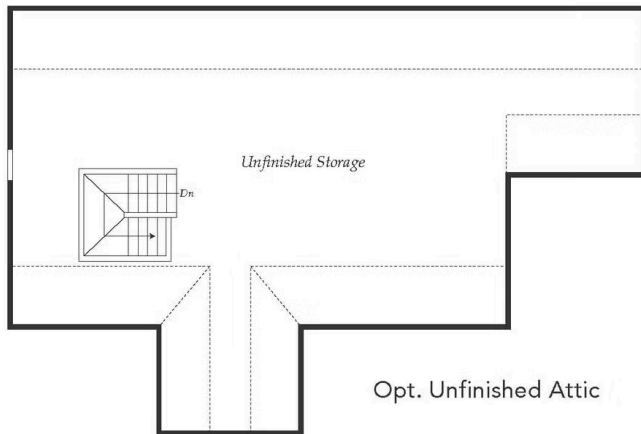
Brick/stone fronts, chimneys, bay windows, keystones, exterior trim, garage doors, light fixtures, dormers, and gables shown on elevations are optional features. Actual product specifications may vary in dimension or detail from these drawings. This insert is for illustrative purposes only and is not part of the legal contract. All dimensions are approximate. Many available options are not shown.



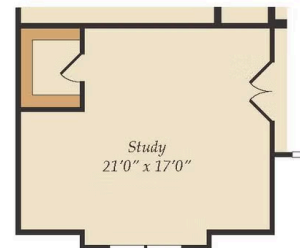
Second Floor Opt.
Half Bath #2



First Floor
Opt. Guest Suite



Opt. Unfinished Attic



First Floor
Opt. Study