

**5 Beds**

**3.5 - 4 Baths**

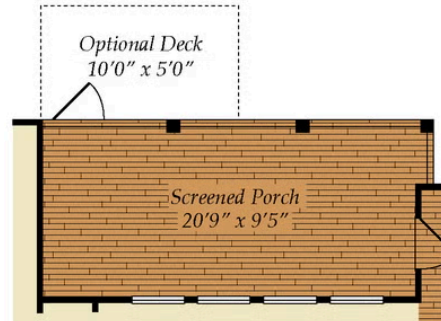
**3,574 - 3,622 Sq Ft**

The Chadbourn, our 2020 Parade of Homes bronze prize winner! Optimize the open floorplan of the Chadbourne with a choice of the Study or a main level Guest Suite. The second floor features a Loft and Bonus Room, along with 4 secondary bedrooms. A large walk-in Pantry and Gourmet Kitchen will appeal to a discerning cook.

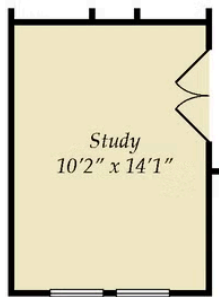
## Available Elevations



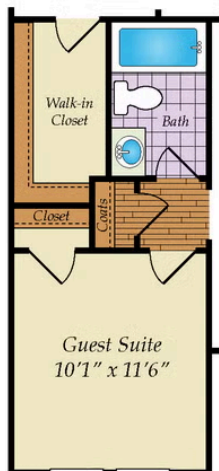
# FIRST FLOOR



OPT. SCREENED PORCH



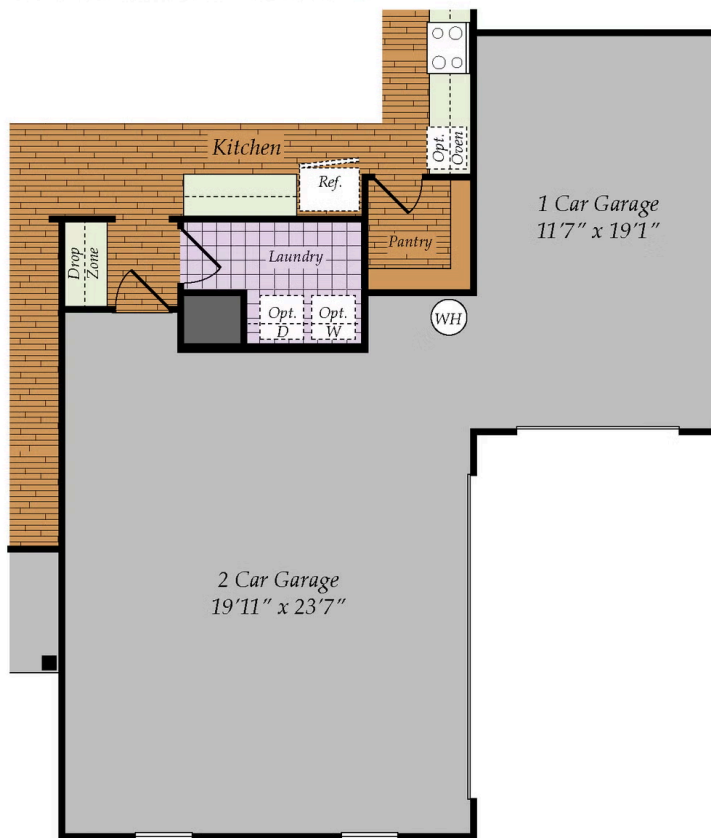
OPT. STUDY



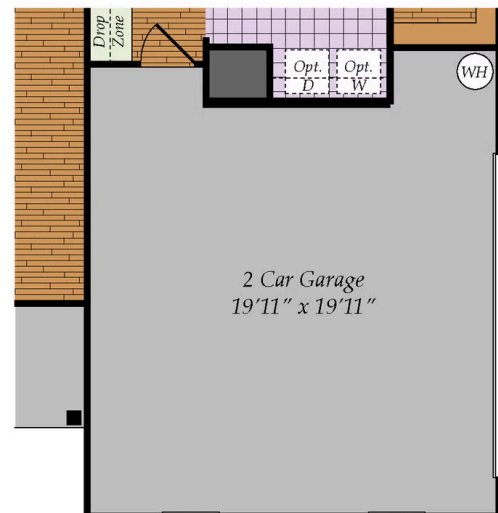
OPT. GUEST SUITE W/ FULL BATH



## OTHER OPTIONS

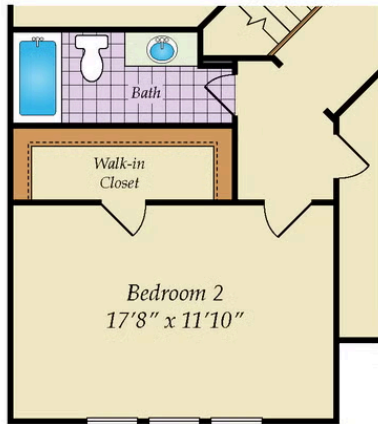


OPT. 3 CAR GARAGE

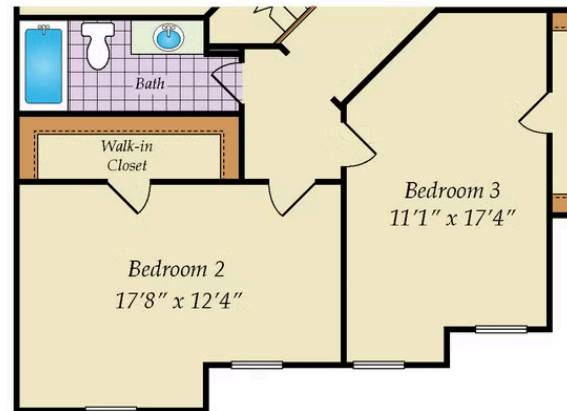


OPT. SIDE LOAD GARAGE

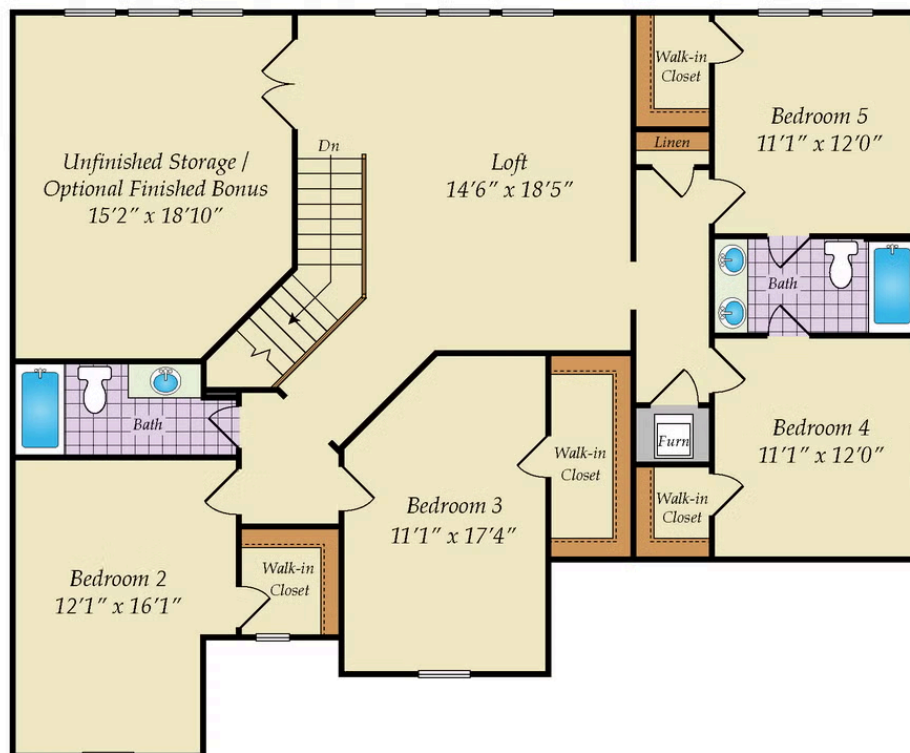
## SECOND FLOOR



SECOND FLOOR W/ELEVATION 2



SECOND FLOOR W/ELEVATION 3



OPT. BATH 4