



Single Family

Available In

**0** COMMUNITY  
& ON YOUR LOT

**4 - 6 Beds**

**3.5 - 6 Baths**

**2,983 - 4,938 Sq Ft**

The inviting large porch welcomes you into the Beaufort. A Dining Room, Study and main level Guest Suite maximizes this floor plan. Choose the screened porch and deck option to expand the functional living area. Opt for an unfinished Attic for maximum storage or a third floor Game Room with a Bedroom. Three car garage is standard.

## Available Elevations



Elevation 1



Elevation 2



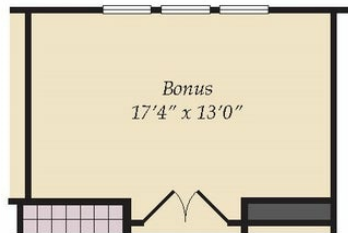
Elevation 3

Brick/stone fronts, chimneys, bay windows, keystones, exterior trim, garage doors, light fixtures, dormers, and gables shown on elevations are optional features. Actual product specifications may vary in dimension or detail from these drawings. This insert is for illustrative purposes only and is not part of the legal contract. All dimensions are approximate. Many available options are not shown.

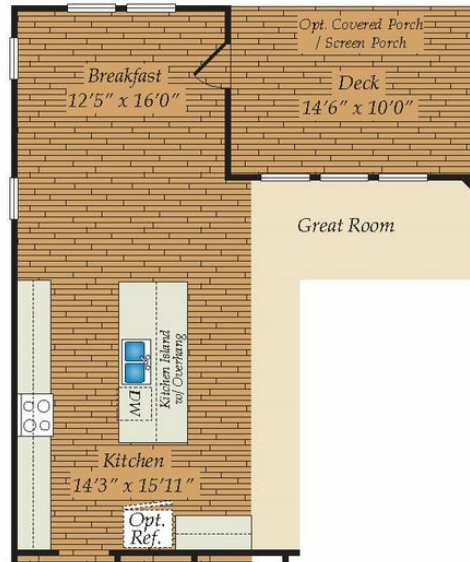
## FIRST FLOOR



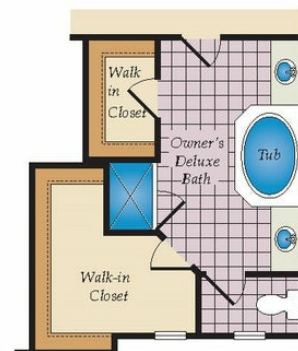
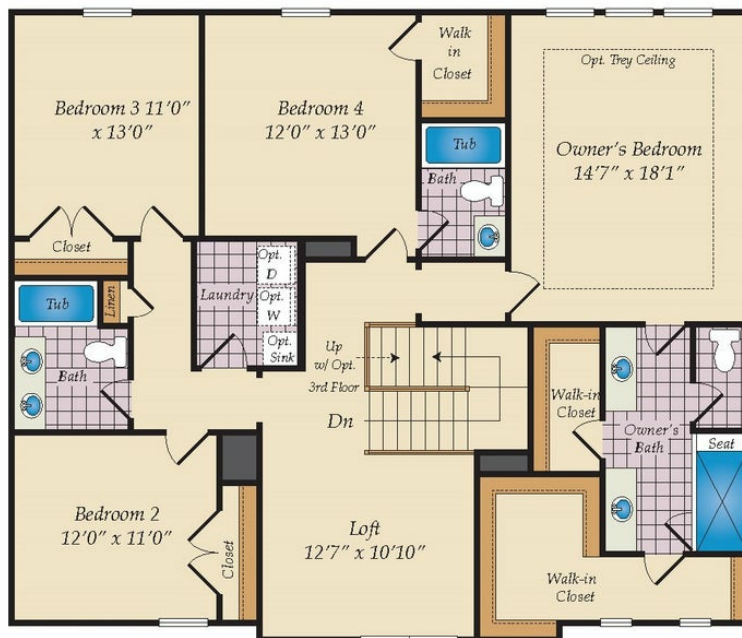
## SECOND FLOOR



OPT. BONUS ROOM

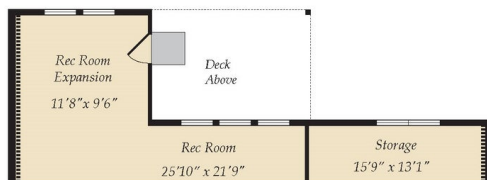


OPT. EXPANDED KITCHEN



OPT. DELUXE MASTER BATH

## OPTIONAL BASEMENT AND OPTIONAL ATTIC



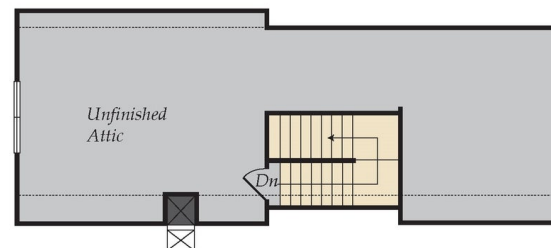
OPT. REC. ROOM W/OPT. EXPANDED KITCHEN ABOVE



OPT. FINISHED BASEMENT



OPT. FINISHED ATTIC



OPT. UNFINISHED ATTIC