



4 - 7 Beds

3.5 - 6.5 Baths

2,983 - 4,938 Sq Ft

The inviting large porch welcomes you into the Beaufort. The spacious design offers an open kitchen and great room area with a large center island for entertaining. A Dining Room, Study and main level Guest Suite maximizes this floor plan. Choose the screened porch and deck option to expand your living area outdoors. The second floor features a large owner's suite, three secondary bedrooms, a full bath and a spacious loft area. Opt for an unfinished Attic for maximum storage or a third floor Game Room with an additional Bedroom. This home can also be built with a full basement that can be finished for additional living space. Three car garage is standard with this plan.

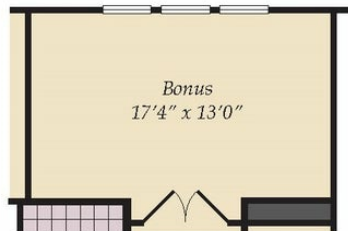
Available Elevations



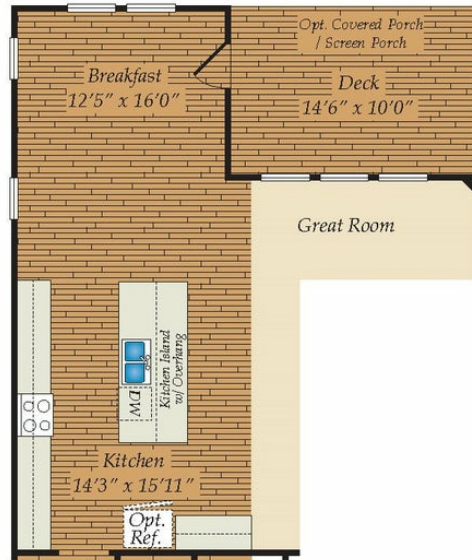
FIRST FLOOR



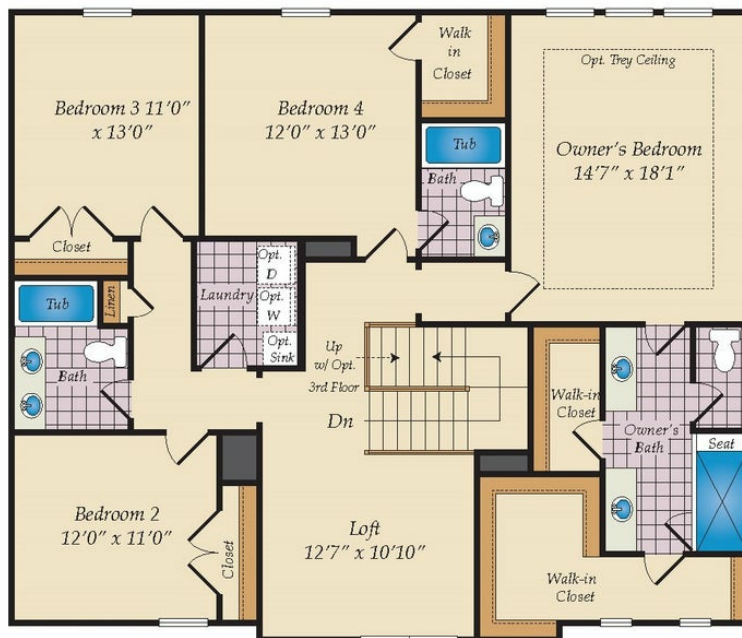
SECOND FLOOR



OPT. BONUS ROOM

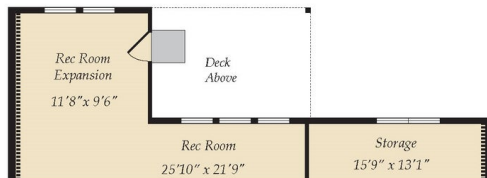


OPT. EXPANDED KITCHEN



OPT. DELUXE MASTER BATH

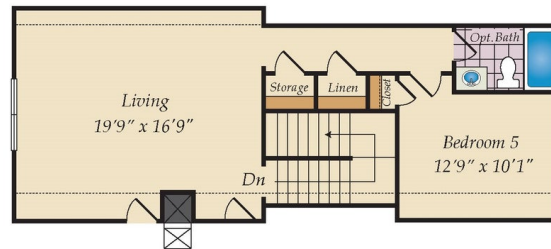
OPTIONAL BASEMENT AND OPTIONAL ATTIC



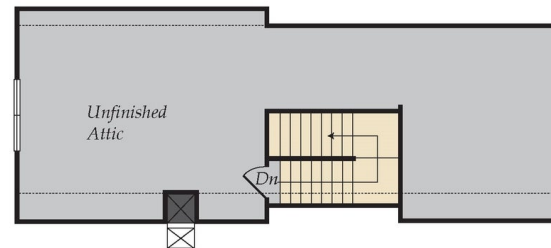
OPT. REC. ROOM W/OPT. EXPANDED KITCHEN ABOVE



OPT. FINISHED BASEMENT



OPT. FINISHED ATTIC



OPT. UNFINISHED ATTIC