



4 - 5 Beds

2.5 - 4 Baths

2,215 - 3,387 Sq Ft

Open 4 bedroom floor plan with optional In-Law suite downstairs! Enjoy this open concept with a large great room that flows right into the kitchen which offers a large center island and plenty counter space for entertaining friends and family. Also enjoy your own dining room that leads to the kitchen right off of the huge open foyer! Upstairs boast 3 bedrooms and also the master suite as well.

Available Elevations



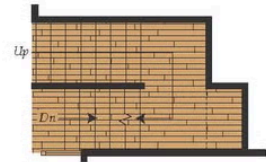
Brick/stone fronts, chimneys, bay windows, keystones, exterior trim, garage doors, light fixtures, dormers, and gables shown on elevations are optional features. Actual product specifications may vary in dimension or detail from these drawings. This insert is for illustrative purposes only and is not part of the legal contract. All dimensions are approximate. Many available options are not shown.



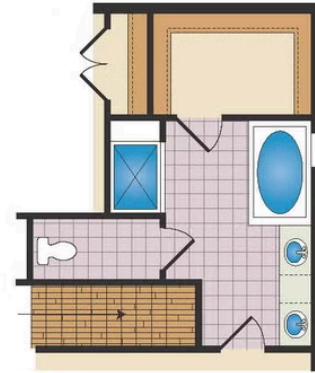
Brick/stone fronts, chimneys, bay windows, keystones, exterior trim, garage doors, light fixtures, dormers, and gables shown on elevations are optional features. Actual product specifications may vary in dimension or detail from these drawings. This insert is for illustrative purposes only and is not part of the legal contract. All dimensions are approximate. Many available options are not shown.



Second Floor



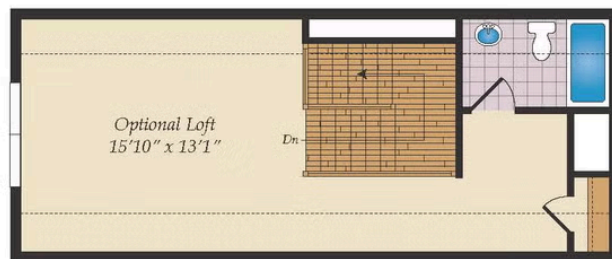
Opt. Stairs w/ Opt. Loft



Opt. Super Bath



Opt. Super Bath w/ Loft



Opt. Third Floor Loft