

**4 - 5 Beds**

**2.5 - 4 Baths**

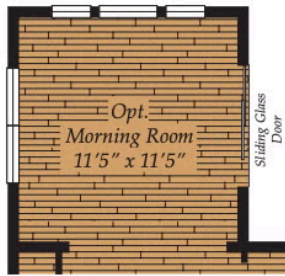
**2,215 - 3,387 Sq Ft**

The Badin is a four-bedroom floor plan with the option to add an In-Law suite downstairs. Enjoy gathering with family and friends in this open-concept home which features a large great room that flows right into the kitchen. A 9-foot island and plenty of counter space will please the chef and a formal dining room is perfect for serving up family meals. Upstairs, the large owner's suite offers an ensuite bath with his and her walk-in closets. Three additional bedrooms, a hall bath and a convenient laundry room complete the second floor. An optional third floor provides a loft and full bath for additional living space. Plenty of options and upgrades are available to personalize this home and make it your own!

## Available Elevations



## FIRST FLOOR



OPT. MORNING ROOM

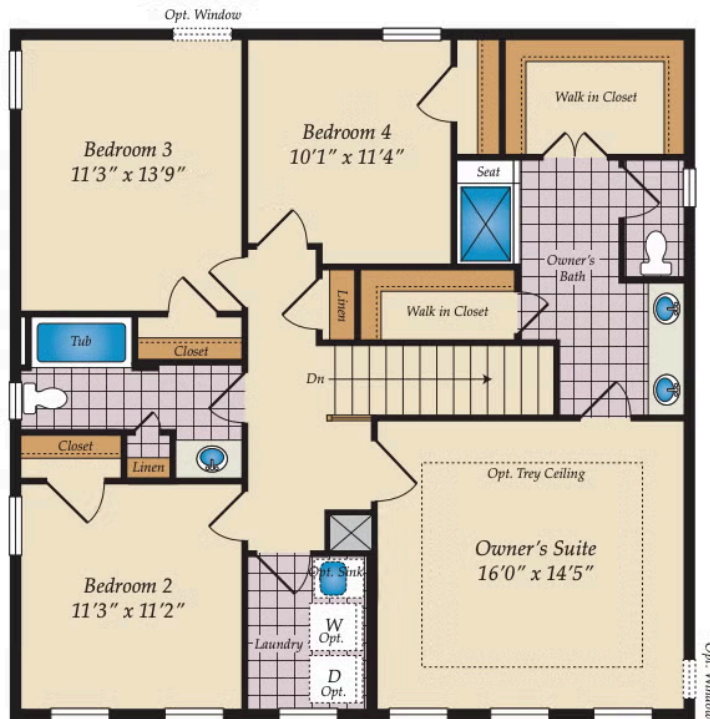


OPT. SCREENED PORCH

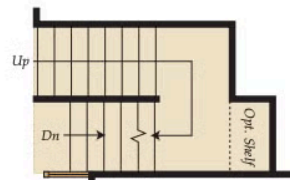


OPT. IN-LAW SUITE

## SECOND FLOOR



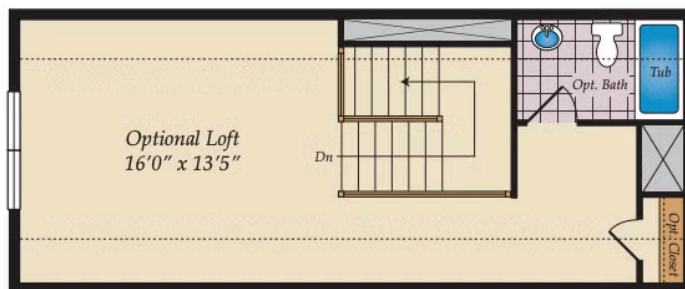
OPT. OWNER'S BATH



OPT. STAIRS W/LOFT



OPT. OWNER'S BATH W/LOFT



OPT. FINISHED LOFT