



Single Family

Available In

**2** COMMUNITIES  
& ON YOUR LOT

**4 - 6 Beds**

**2.5 - 4 Baths**

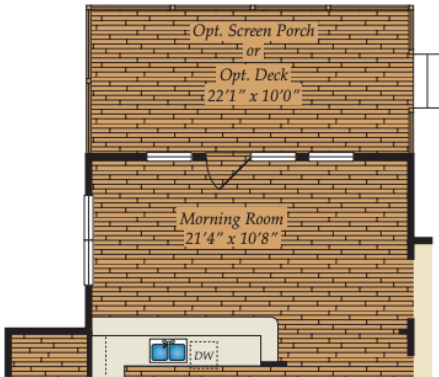
**3,548 - 5,600 Sq Ft**

The Avenel has it all for that growing family. Breathtaking two story foyer with a Juliet balcony and dual staircase. Work from home? We have a home office. Expansive family room that's open to the breakfast and kitchen. Great for entertaining or just spending family time. The owners suite upstairs is a true sanctuary because of its size and spa like bath. We can also make a perfect place for mom and dad as we can change the library into an in-law suite on the main floor, so no stairs. It also has a formal dining room that's large enough for those holiday dinners. 4 bedroom, up to 4 full baths.

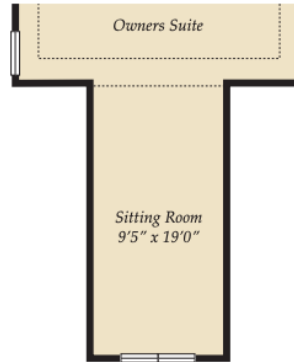
## Available Elevations



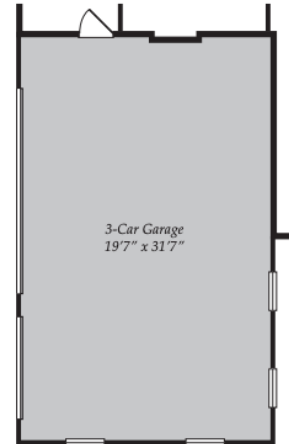
## FIRST FLOOR



OPT. MORNING ROOM AND OPT. SCREEN PORCH



2ND FLOOR OPT. SITTING  
ROOM W/ 3 CAR GARAGE



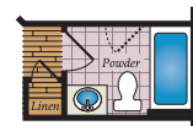
OPT. 3 CAR GARAGE



OPT. CONSERVATORY



FIRST FLOOR STAIRS W/OPT.  
BASEMENT



OPT. FULL BATH

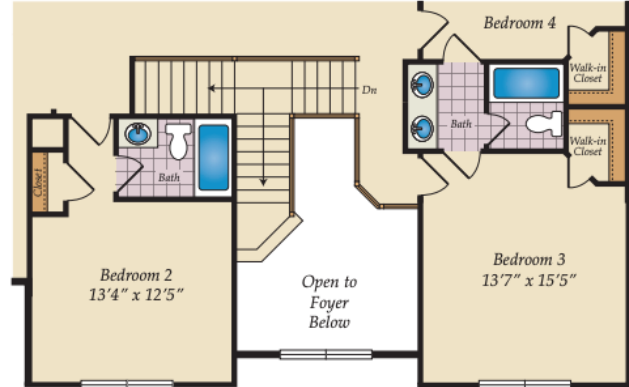
Brick/stone fronts, chimneys, bay windows, keystones, exterior trim, garage doors, light fixtures, dormers, and gables shown on elevations are optional features. Actual product specifications may vary in dimension or detail from these drawings. This insert is for illustrative purposes only and is not part of the legal contract. All dimensions are approximate. Many available options are not shown.



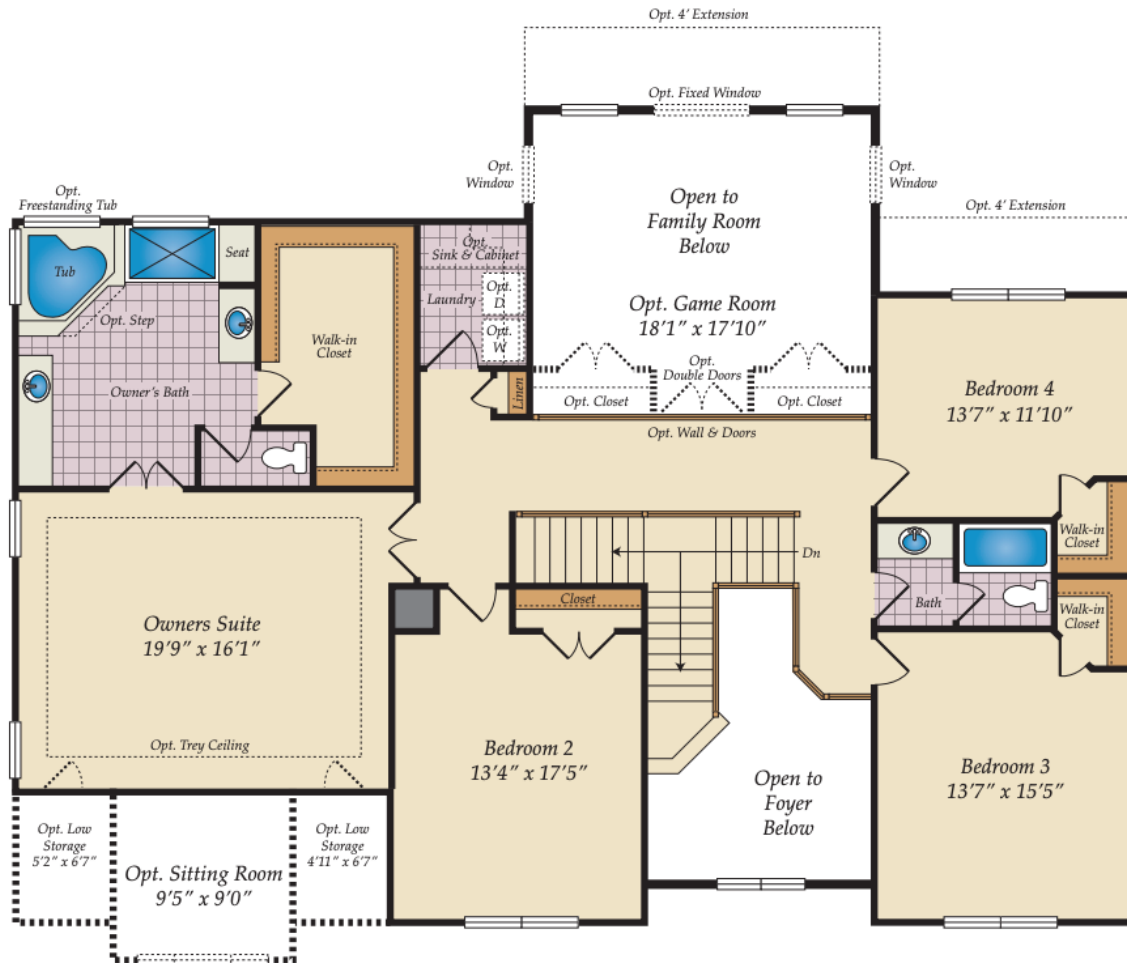
## SECOND FLOOR



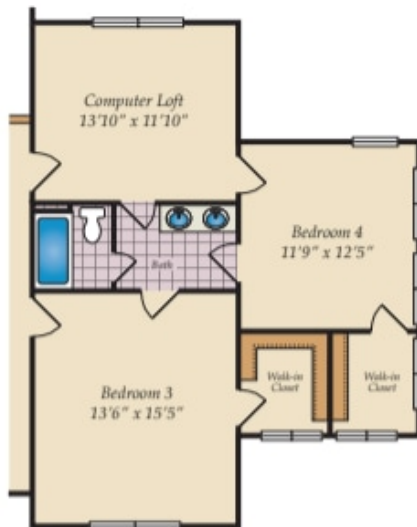
OPT. CALIFORNIA SUPER BATH



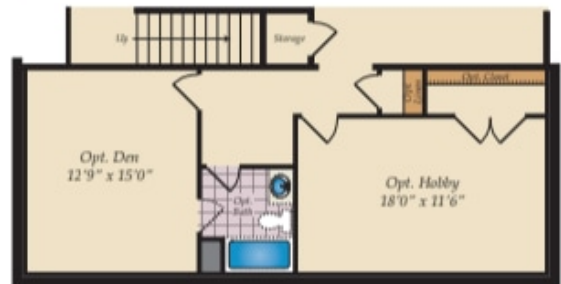
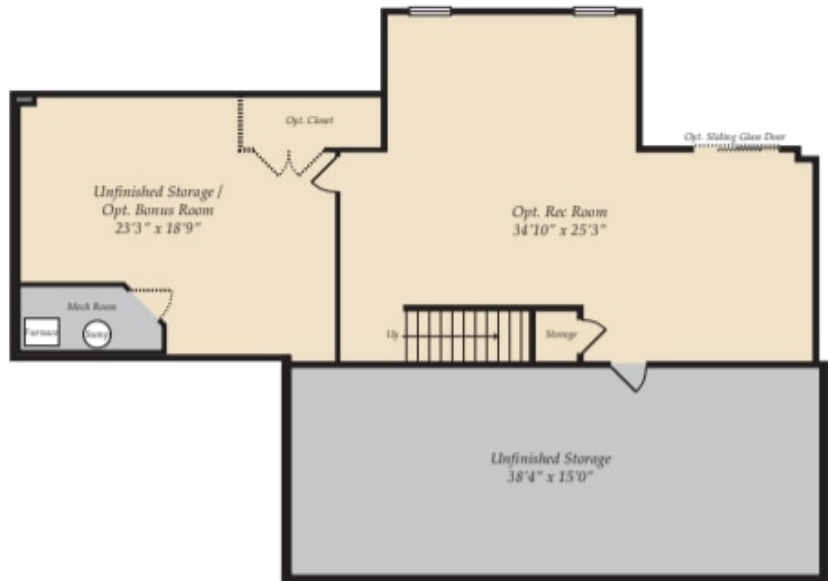
OPT. 3RD BATH & BUDDY BATH



## OPT. BASEMENT AND MORE OPTIONS



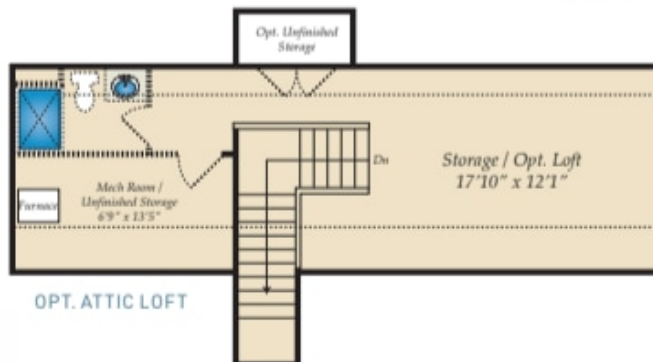
OPT. 2 STORY W/CONSERVATORY



OPT. BASEMENT W/OPT.DEN &  
OPT.HOBBY ROOM



SECOND FLOOR STAIRS W/ ATTIC



OPT. ATTIC LOFT