



4 - 6 Beds

2.5 - 4 Baths

3,548 - 5,600 Sq Ft

The Avenel is one of our most popular plans, perfect for a growing family. This home has fabulous curb appeal with craftsman-style elevations, a front porch and a two- or three-car garage. Enter into a breathtaking two-story foyer with a Juliet balcony and dual staircase, flanked by a formal living room and dining room. The expansive two-story family room is open to the breakfast area and kitchen--great for entertaining or just spending family time. The chef in the family will appreciate the gourmet kitchen with large island, walk-in pantry and optional morning room. A home office is perfect for those who work from home. Upstairs, the large owners suite is a true sanctuary with a spa bath and large walk-in closet. Three additional bedrooms, a hall bath and convenient laundry room complete this floor. There are many options to configure this home to meet your needs. Popular upgrades include a main level in-law or guest suite, a conservatory, a screened porch, a game room, California Super Bath, a finished basement, an attic loft, and much more!

Available Elevations



FIRST FLOOR



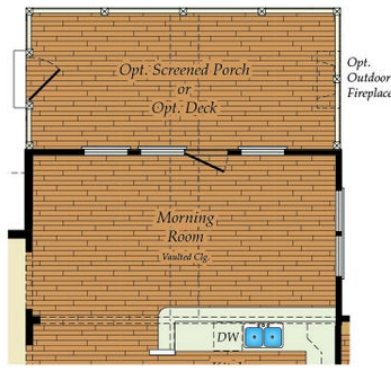
OPT. CONSERVATORY



OPT. FIRST FLOOR FULL BATH



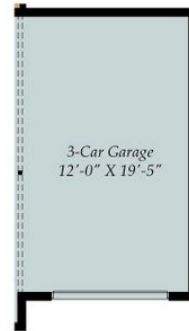
FIRST FLOOR STAIRS W/OPT. BASEMENT



OPT. MORNING ROOM AND OPT. SCREEN PORCH

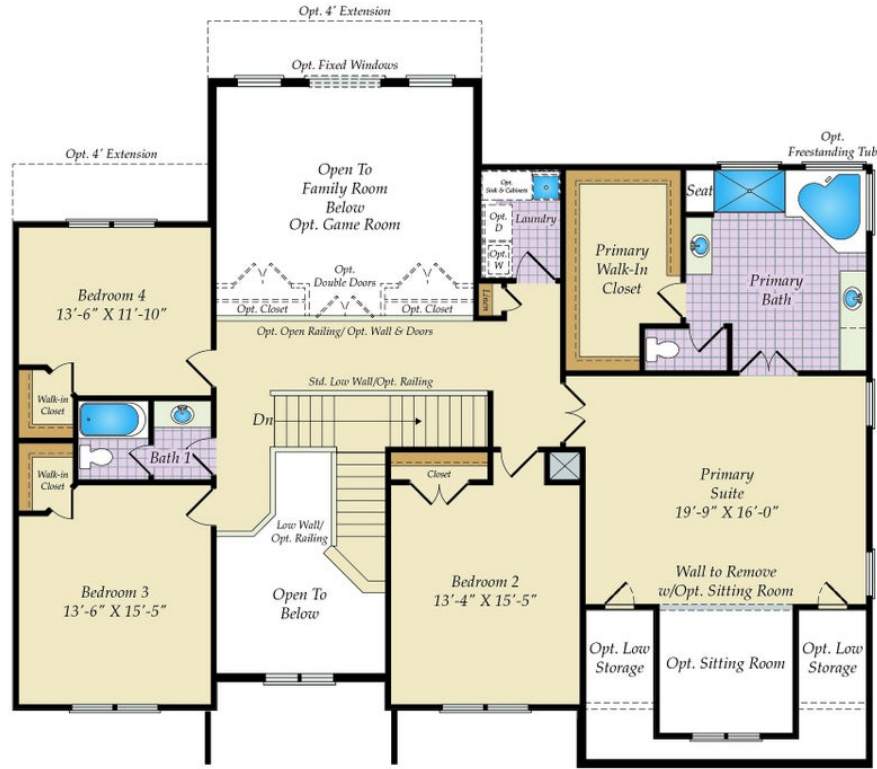


OPT. SIDE LOAD 3 CAR GARAGE



OPT. FRONT LOAD 3 CAR GARAGE

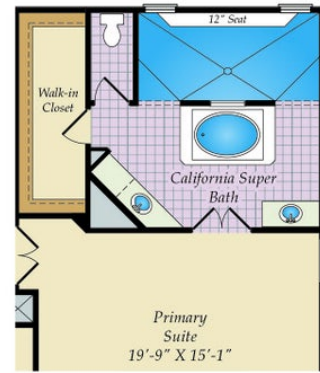
SECOND FLOOR



OPT. 2 STORY W/ CONSERVATORY

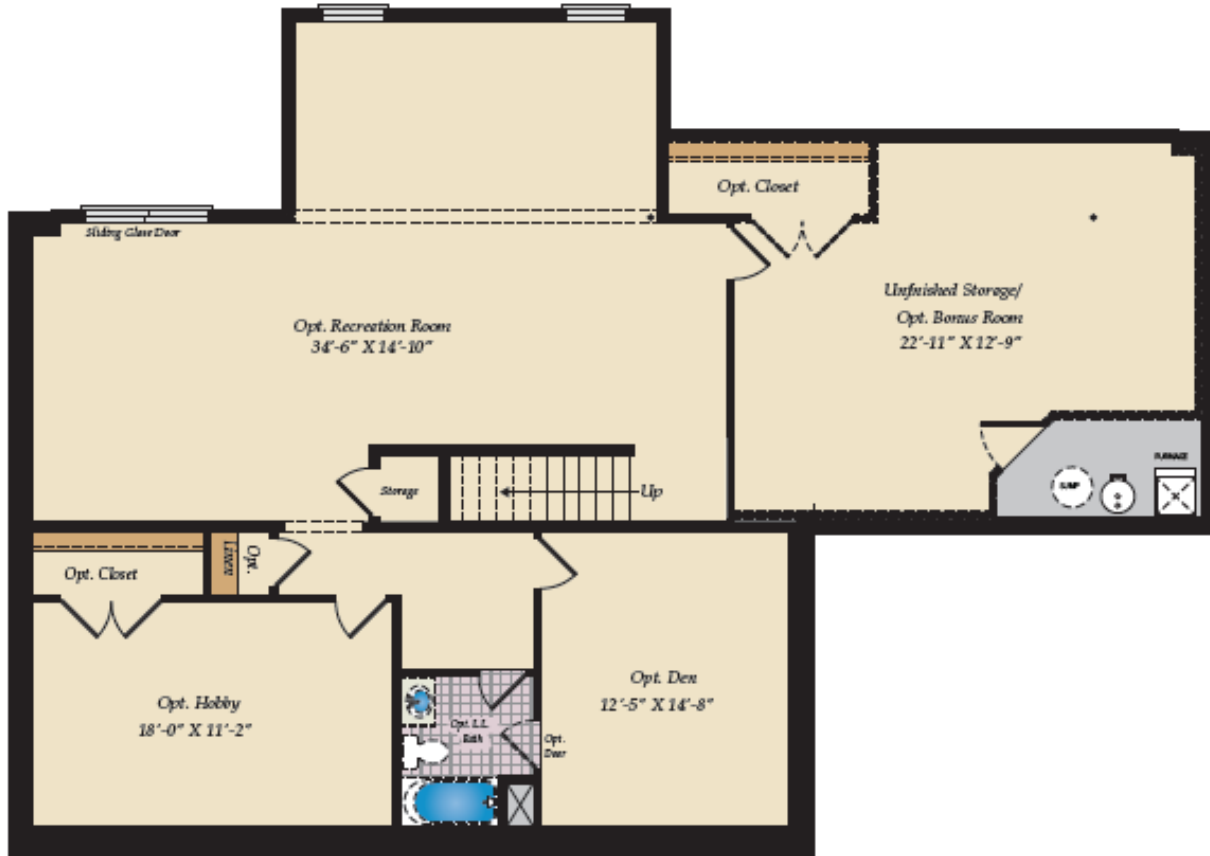


OPT. BATH 3 AT BEDROOM 2

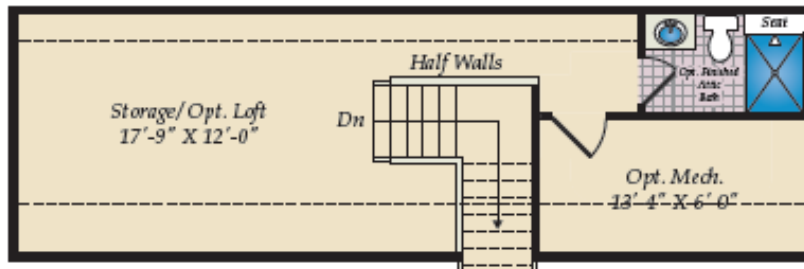


OPT. CALIFORNIA SUPER BATH

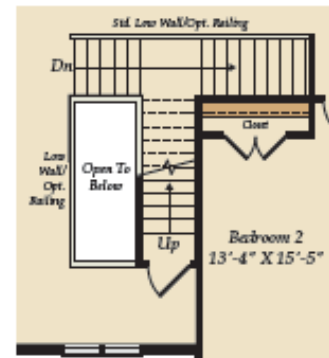
OPT. BASEMENT AND MORE OPTIONS



OPT. BASEMENT W/OPT. DEN & OPT. HOBBY ROOM



OPT. ATTIC LOFT



SECOND FLOOR STAIRS W/ ATTIC