



Single Family

Available In

**0** COMMUNITY  
& ON YOUR LOT

**4 - 7 Beds**

**2.5 - 5.5 Baths**

**3,660 - 5,550 Sq Ft**

The Annapolis is a single family estate home starting at 3,660 square feet, with options to expand up to 5,550 square feet of living space. The home comes standard with a 2-car garage and several traditional, craftsman or farmhouse style elevations to choose from. The main level features a foyer with a formal dining room and library at the front of the home. The rear of the home has an open format with a large great room that is open to an eat-in kitchen with a walk-in pantry and large central island. This level also includes a mud room, powder room and a home office that can be converted to an in-law suite with a full bath. Choose to expand the home with an optional morning room and a screened porch with outdoor fireplace. The second level offers 4 bedrooms, two full baths and a spacious loft area for additional living space. The owner's suite includes two huge walk-in closets and an ensuite spa bath with a freestanding tub. For those who need more bedrooms, the loft can be converted to a 5th bedroom with a shared buddy bath. A laundry room is also conveniently located on the second floor. ...

## Available Elevations



Elevation 1



Elevation 2



Elevation 3

## FIRST FLOOR



OPT. SCREENED PORCH



OPT. MORNING ROOM



OPT. IN-LAW SUITE

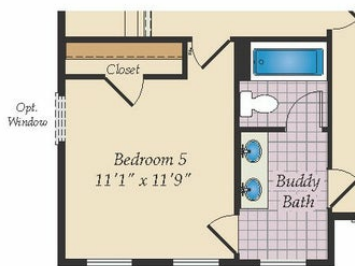


OPT. 2-CAR SIDE LOAD

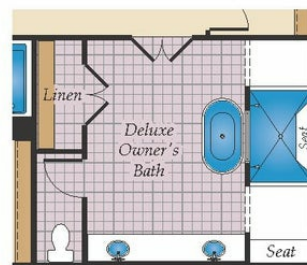
Opt. 3-Car Side Load Garage  
20'1" x 30'1"

Opt. 3-Car Garage  
12'0" x 19'1"

## SECOND FLOOR



OPT. BEDROOM 5

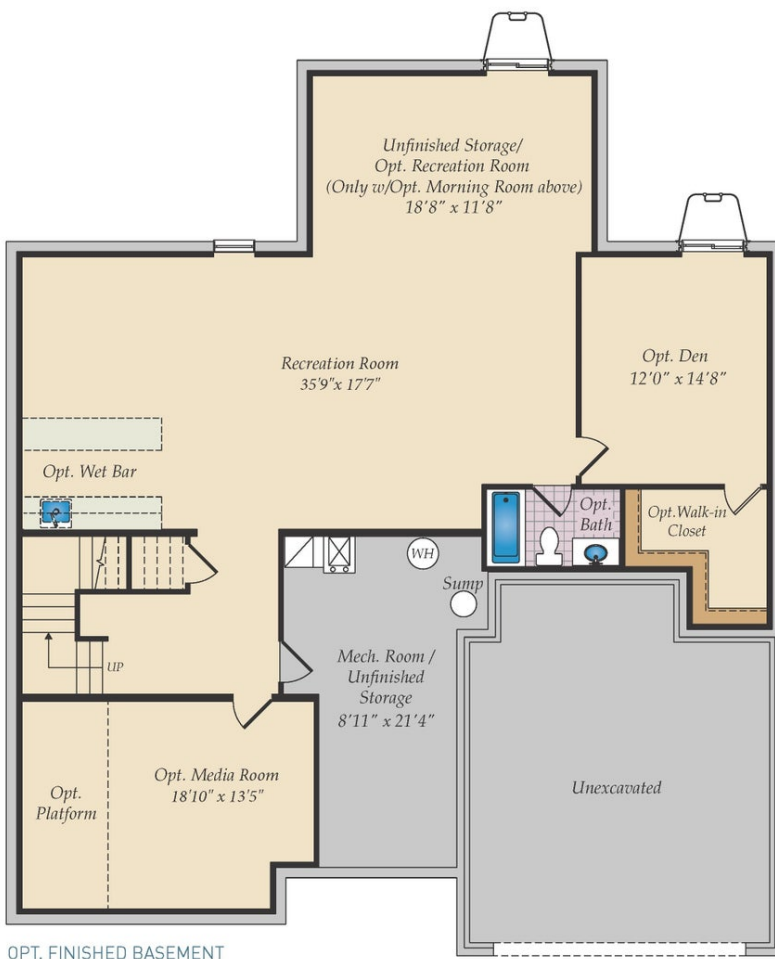


OPT. DELUXE OWNER'S BATH

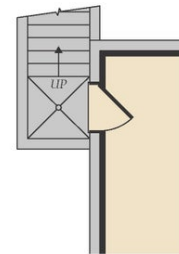
Brick/stone fronts, chimneys, bay windows, keystones, exterior trim, garage doors, light fixtures, dormers, and gables shown on elevations are optional features. Actual product specifications may vary in dimension or detail from these drawings. This insert is for illustrative purposes only and is not part of the legal contract. All dimensions are approximate. Many available options are not shown.



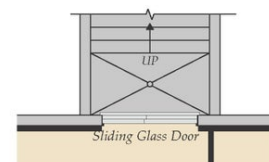
## BASEMENT



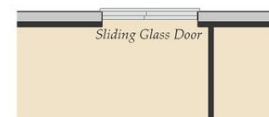
OPT. FINISHED BASEMENT



OPT. SINGLE AREAWAY



OPT. DOUBLE AREAWAY



OPT. WALKOUT