



Single Family

Available In

**2** COMMUNITIES  
 & ON YOUR LOT

**4 - 7 Beds**

**2.5 - 5.5 Baths**

**3,660 - 5,550 Sq Ft**

The Annapolis-Craftsman is a single family estate home starting at 3,660 square feet, with options to expand up to 5,550 square feet of living space. The home comes standard with a 2-car garage and several craftsman-style elevations to choose from. The main level features a foyer with a formal dining room and library at the front of the home. The rear of the home has an open format with a large great room that is open to an eat-in kitchen with a walk-in pantry and large central island. This level also includes a mud room, powder room and a home office that can be converted to an in-law suite with a full bath. Choose to expand the home with an optional morning room and a screened porch with outdoor fireplace. The second level offers 4 bedrooms, two full baths and a spacious loft area for additional living space. The owner's suite includes two huge walk-in closets and an ensuite spa bath with a freestanding tub. For those who need more bedrooms, the loft can be converted to a 5th bedroom with a shared buddy bath. A laundry room is also conveniently located on the second floor. The basement can be ...

## Available Elevations



Annapolis Craftsman Exterior - Elevation  
 30

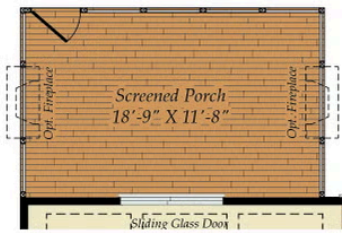


Annapolis Craftsman Exterior - Elevation  
 31

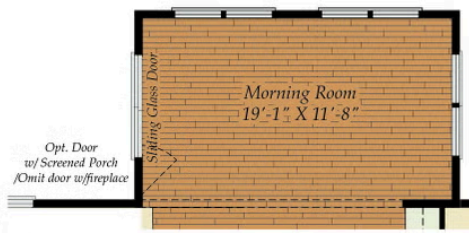


Annapolis Craftsman Exterior - Elevation  
 32

# FIRST FLOOR



OPT. SCREENED PORCH



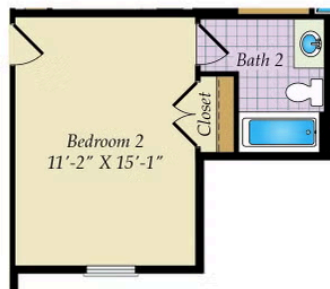
OPT. MORNING ROOM



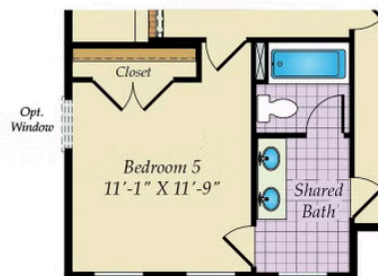
OPT. IN-LAW SUITE



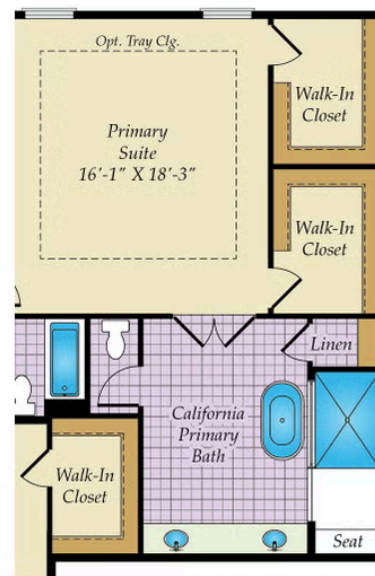
## SECOND FLOOR



OPT. BATH 2

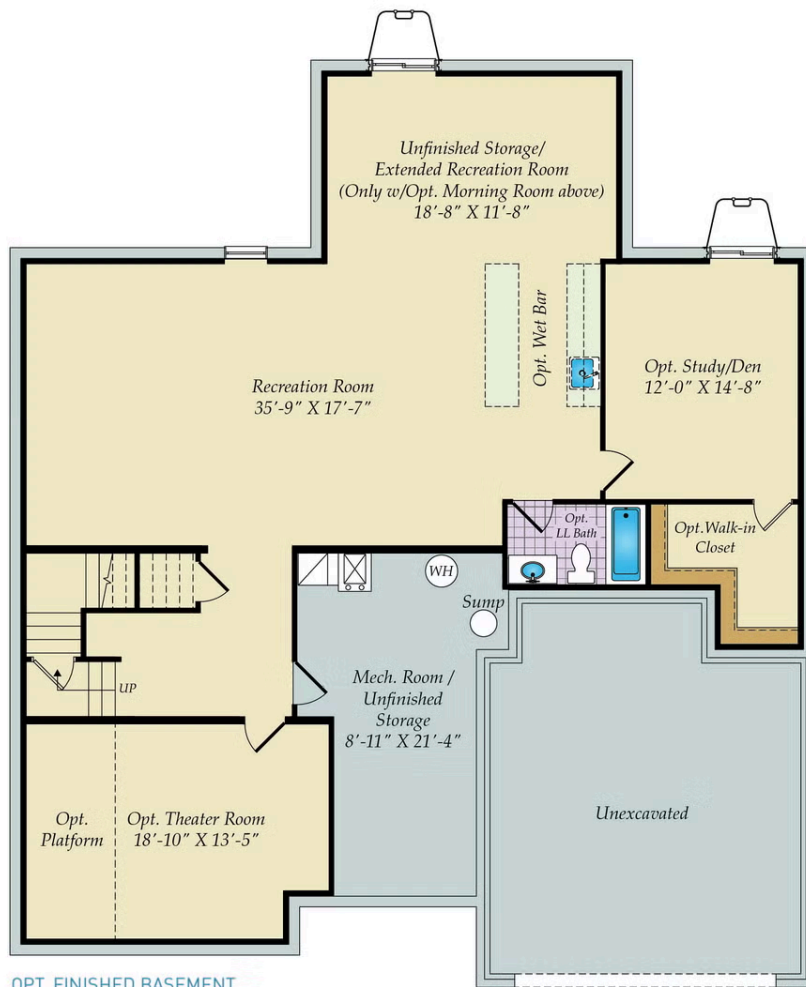


OPT. BEDROOM 5

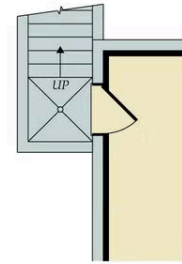


OPT. CALIFORNIA PRIMARY BATH

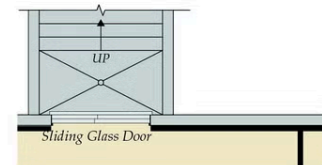
# BASEMENT



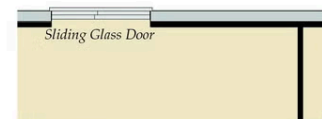
OPT. FINISHED BASEMENT



OPT. SINGLE AREAWAY



OPT. DOUBLE AREAWAY



OPT. WALKOUT