



2 - 3 Beds

2 - 3 Baths

1,793 - 4,094 Sq Ft

COMMUNITY CONTACT

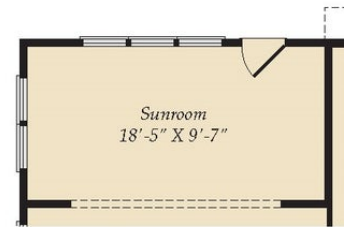
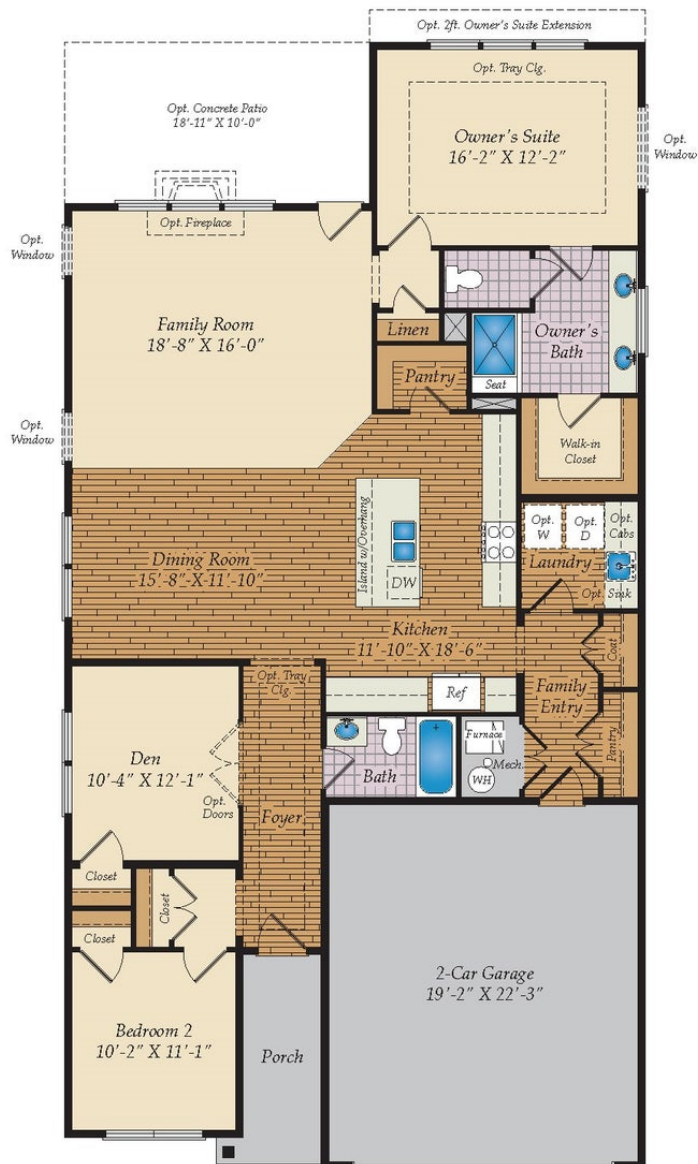
LOT 1 - KING FARMS ROAD
 LAUREL, DE 19956

The Ives is a cottage-style home that features one-level living with an open floorplan, a large owner suite, a guest room and den. Add a loft and sky basement for additional space and storage. Plenty of options such as room extensions, sunrooms and screened porch are available to personalize this home.

Available Elevations



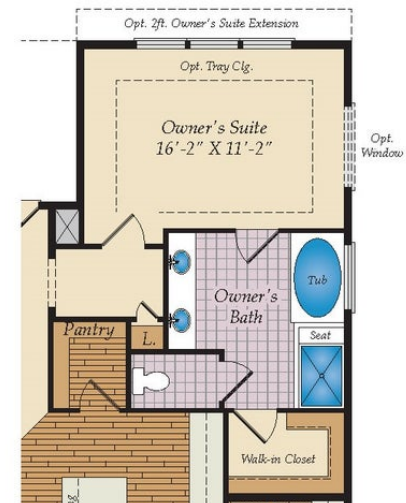
FIRST FLOOR



OPT. SUNROOM

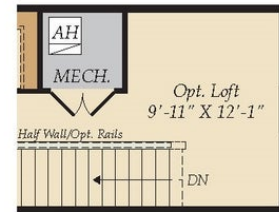
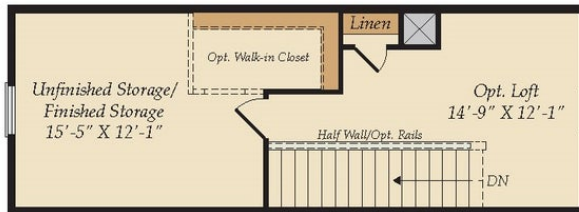


OPT. SCREENED PORCH

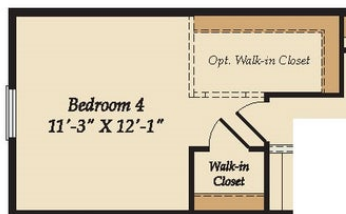


OPT. OWNER'S BATH W/
TUB & SHOWER

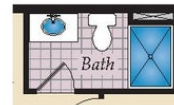
OPT. SKY BASEMENT



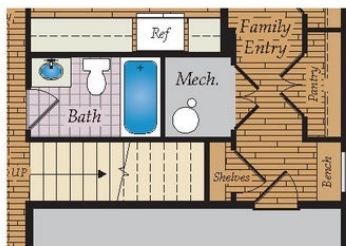
OPT. LOWER LEVEL
BASEMENT CONDITION



OPT. BEDROOM 4



OPT. BATH



OPT. STAIRS TO OPT. SKY BASEMENT



OPT. STAIRS TO OPT. SKY BASEMENT
& OPT. BASEMENT

OPTIONAL BASEMENT

