



Single Family

**3 - 4 Beds**

**2.5 - 4 Baths**

**1,970 - 4,790 Sq Ft**

**COMMUNITY CONTACT**

METZ DRIVE  
 CAMDEN WYOMING, DE 19934

Spacious ranch style home with optional finished upstairs bonus room. This home presents the perfect open floor plan for hosting family gatherings or events. You can also enjoy the privacy of setting outside on your large 10x16 ft patio or screen porch. This is a perfect home for first time home buyers as well as people looking to downsize.

## Available Elevations



Elevation 1



Elevation 2

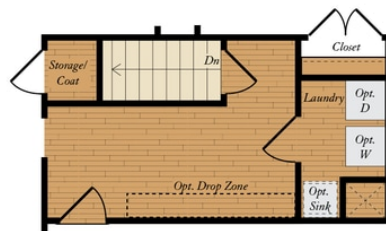
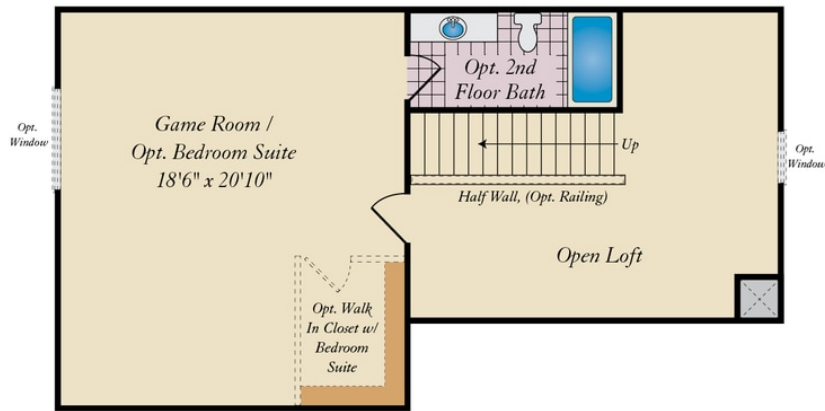


Elevation 3

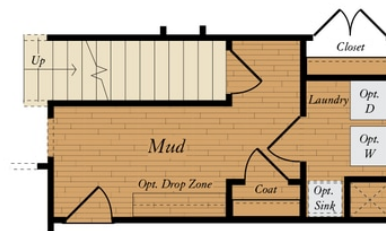
## FIRST FLOOR



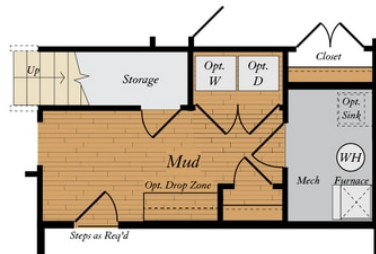
## SECOND FLOOR



1ST FLOOR OPT. BASEMENT

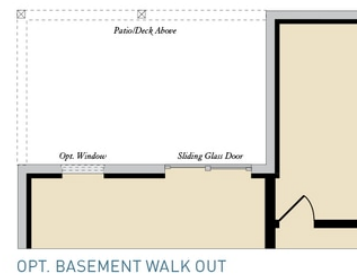
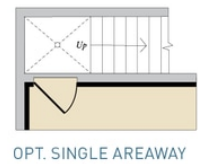
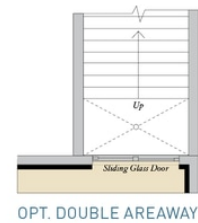
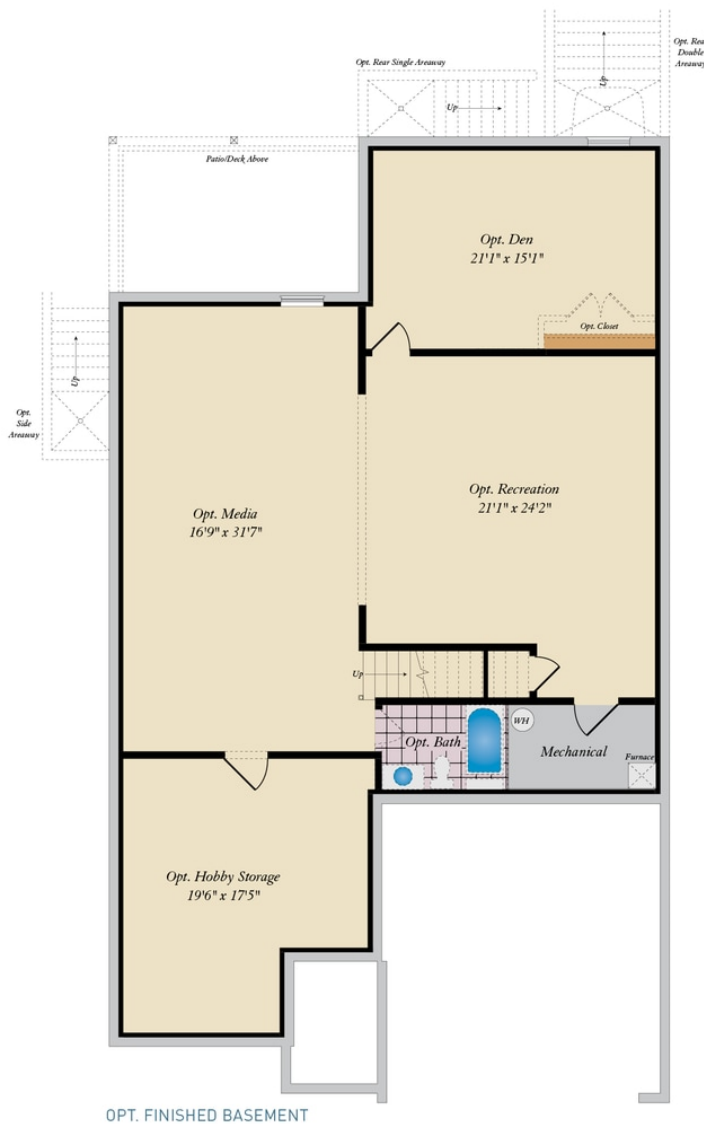


STAIRS TO 2ND FLOOR W/ BASEMENT



STAIRS TO 2ND FLOOR - NO BASEMENT

## OPT. LOWER LEVEL



## OPTIONS

