

**4 Beds****3.5 Baths****2974 Sq Ft****ADDRESS**5139 KINGS PINNACLE DRIVE - LOT 10
KINGS MOUNTAIN, NC 28086

The Norman plan is a great family plan with a giant loft! This particular home comes complete with 4 Bedrooms and 3.5 Bathrooms. In addition to the standard features, highlights of this open-concept home include

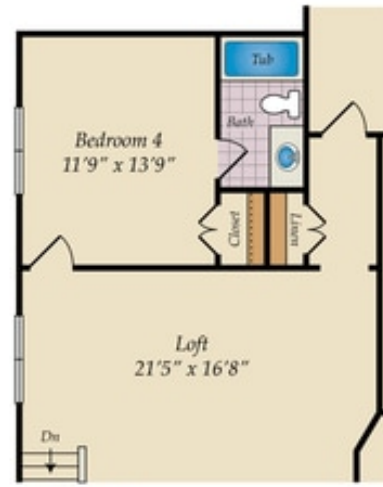
- 2 Car side-load garage
- Additional Sunroom
- Added full bath to 4th bedroom
- Gas fireplace in great room
- Gourmet kitchen with spacious island
- Back deck with beautiful private backyard

Photos of similar home are for representation only and may show options or upgrades not included in this home. See New Home Sales Consultant for a complete list of included features.

FIRST FLOOR



SECOND FLOOR



OPT. ATTIC

