



3 Beds

2.5 - 4.5 Baths

2,282 - 2,607 Sq Ft

COMMUNITY CONTACT

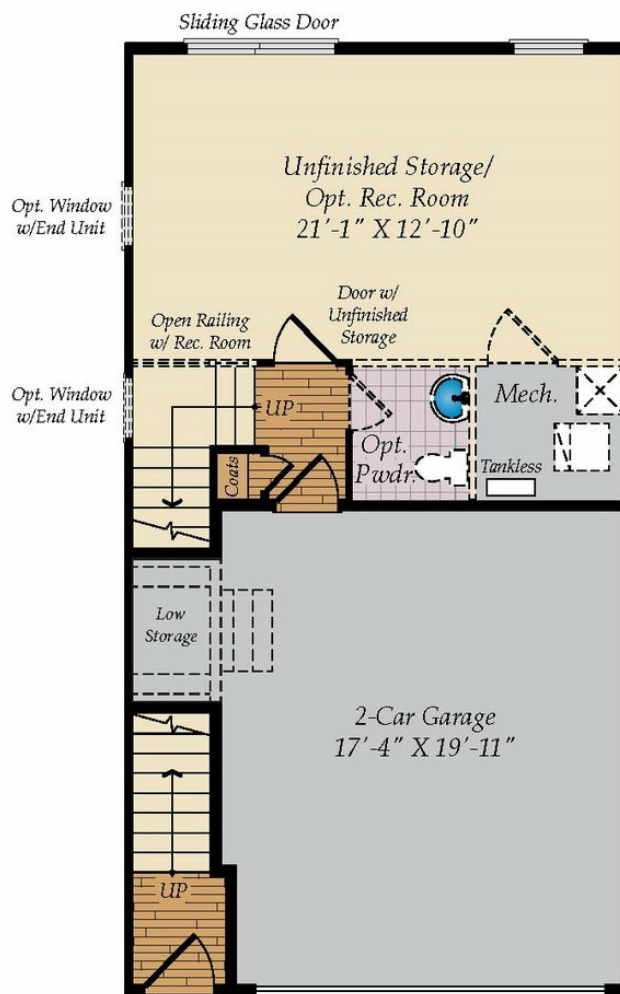
16623 TORTOLA DRIVE
ACCOKEEK, MD 20607
301-517-7314
INFO@CARUSOHOMES.COM

The Potomac plan is a garage townhome home with up to 2,607 square feet of living space, a two-car front load garage and several classic elevations to choose from. Inside, the main level offers an open floorplan with a central kitchen that is perfect for entertaining. The home comes standard with 3 bedrooms and 2.5 baths with the option to finish a rec room and additional bath on the bottom level. The Potomac also offers an optional 3rd floor loft which includes a bonus room, a full bath and an optional balcony. Choose from many options and finishes to reflect your personality and make this home your own. Photos of a similar plan used for representation only.

Available Elevations

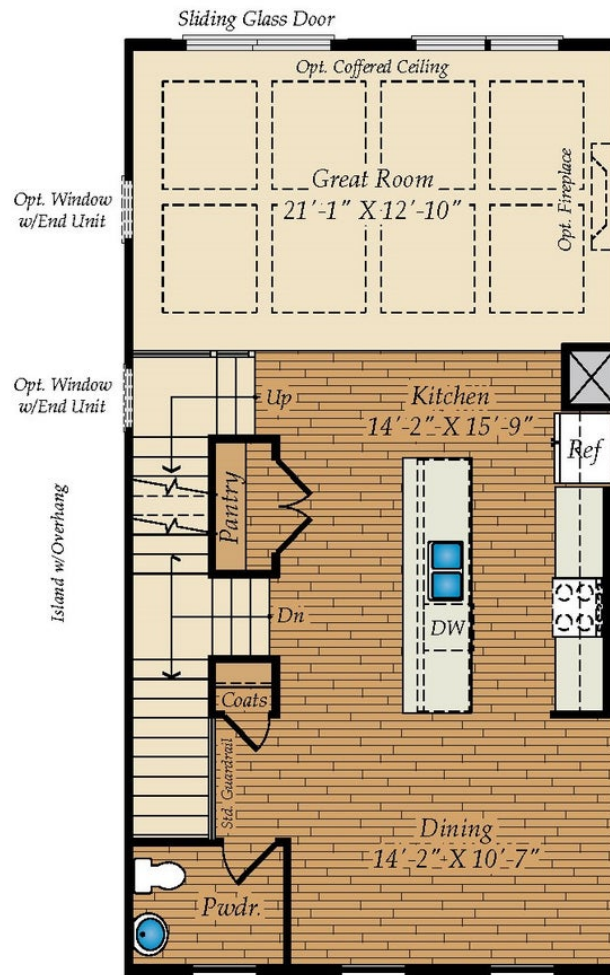


LOWER LEVEL



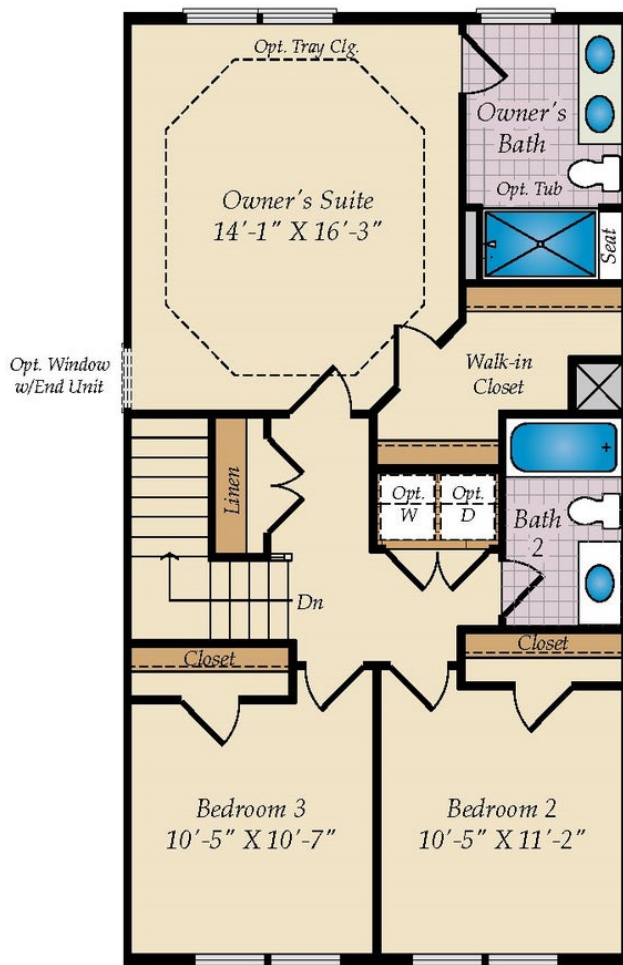
STD. LOWER LEVEL FLOOR PLAN

FIRST FLOOR

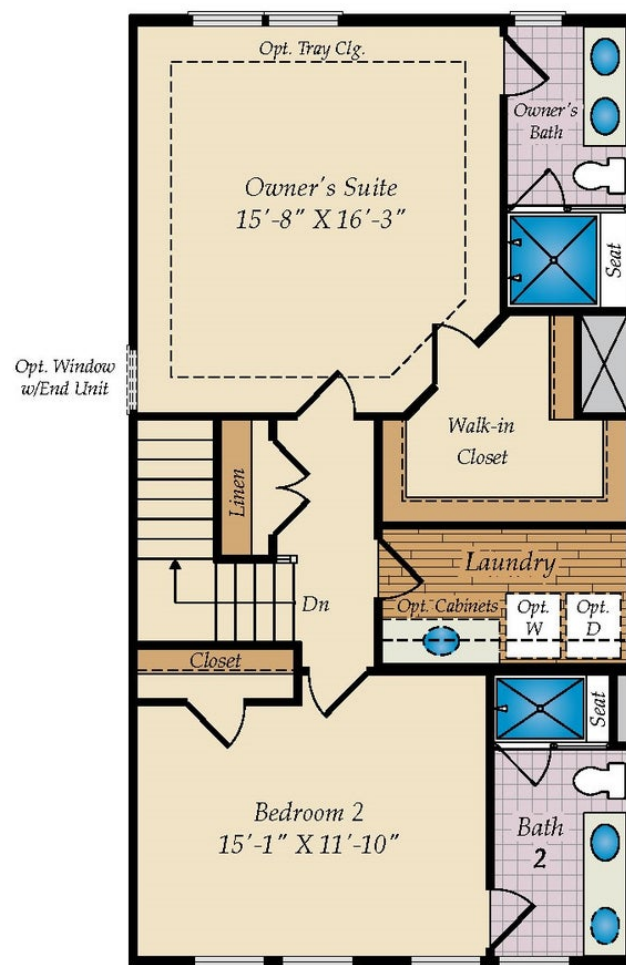


STD. FIRST FLOOR PLAN

SECOND FLOOR

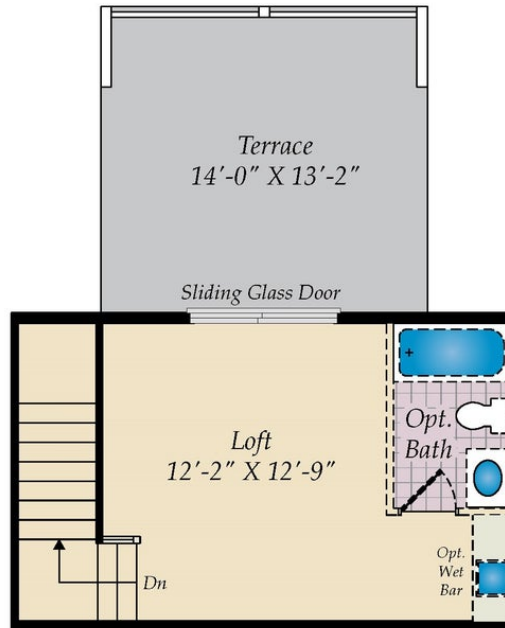


STD. SECOND FLOOR

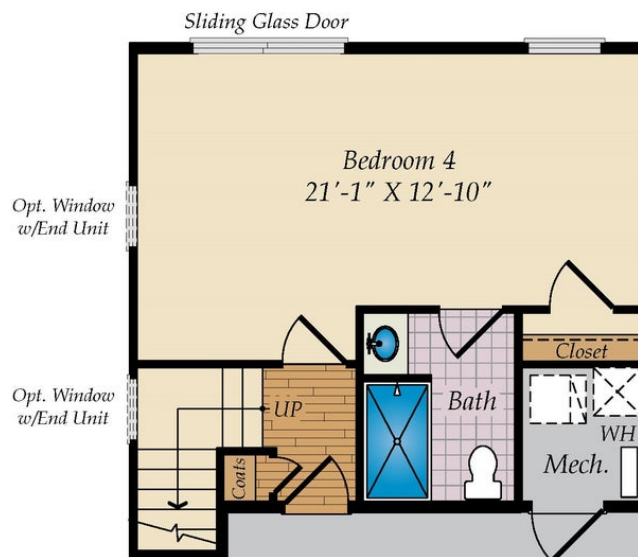


ALT. SECOND FLOOR

OPT. THIRD FLOOR & OTHER OPTIONS

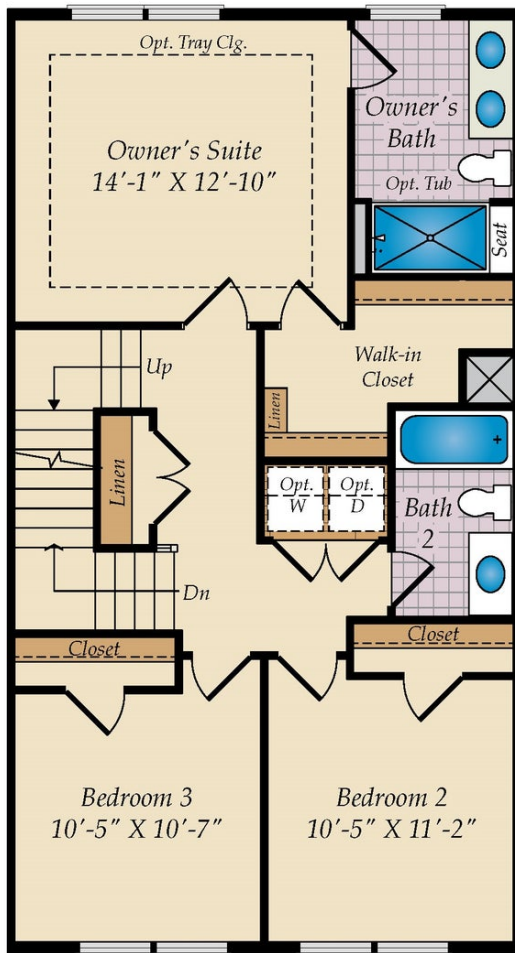


OPT. LOFT W/FULL BATH

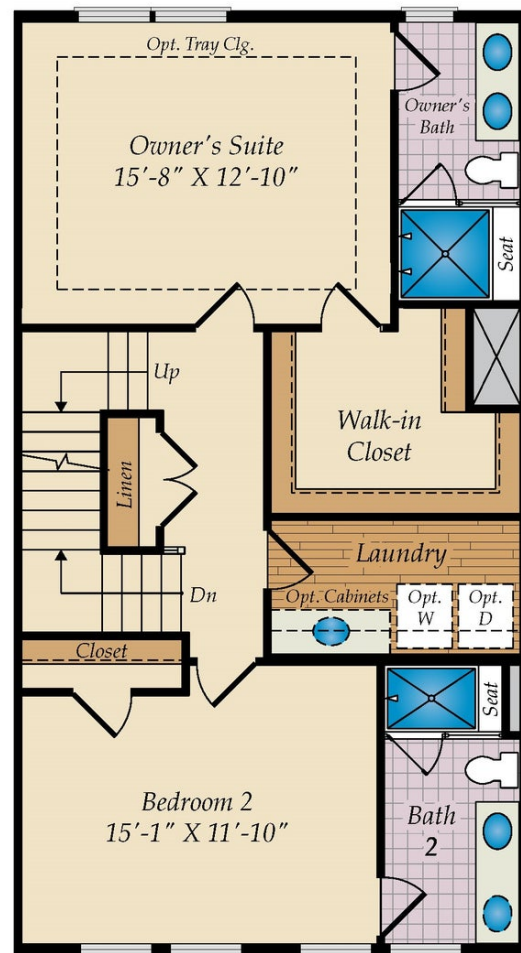


OPT. BEDROOM 4 W/BATH AT THE LOWER LEVEL

SECOND FLOOR WITH OPT. LOFT



STD. SECOND FLOOR W/OPT. LOFT STAIR



OPT. ALT. SECOND FLOOR W/OPT. LOFT STAIR